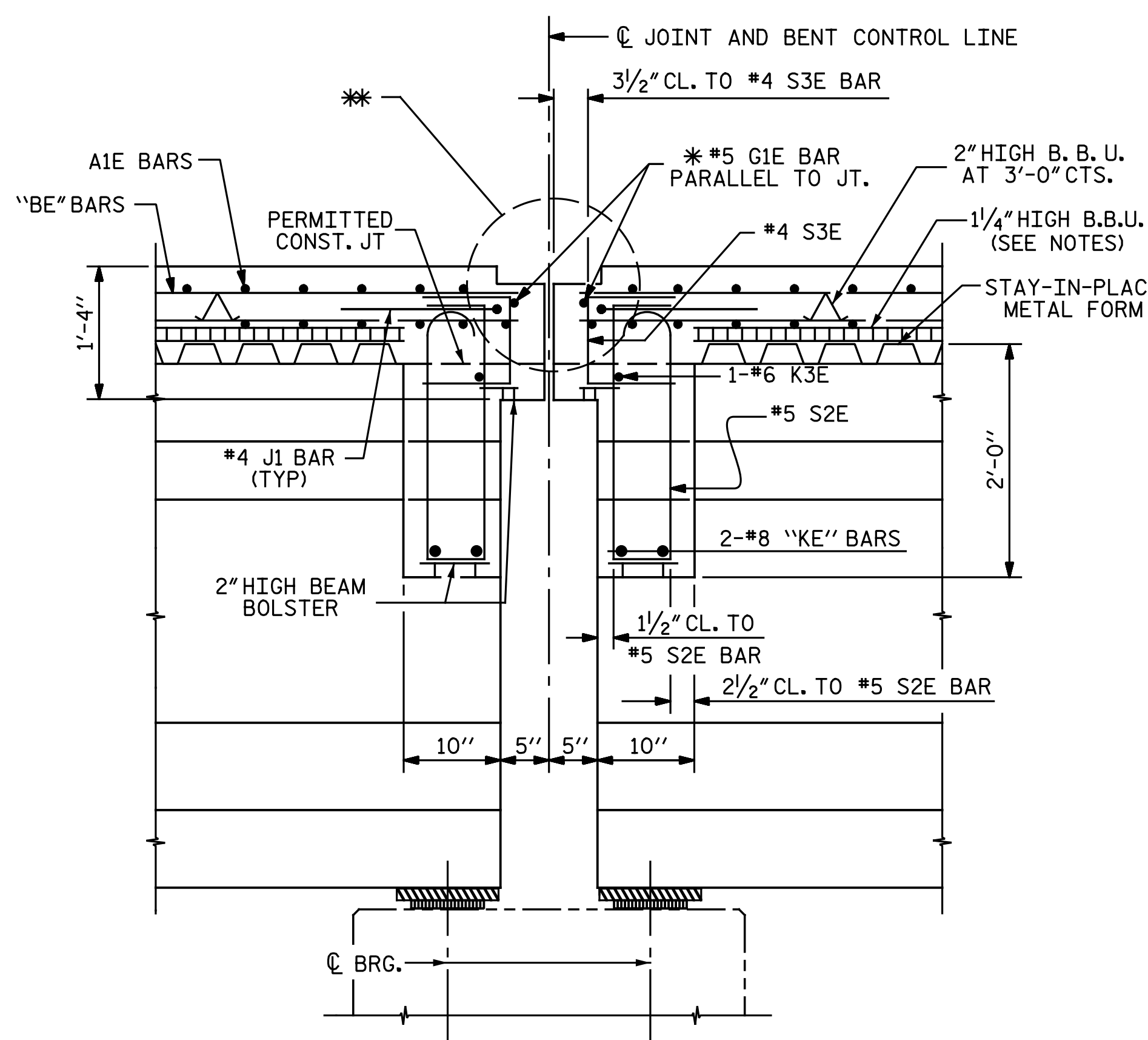


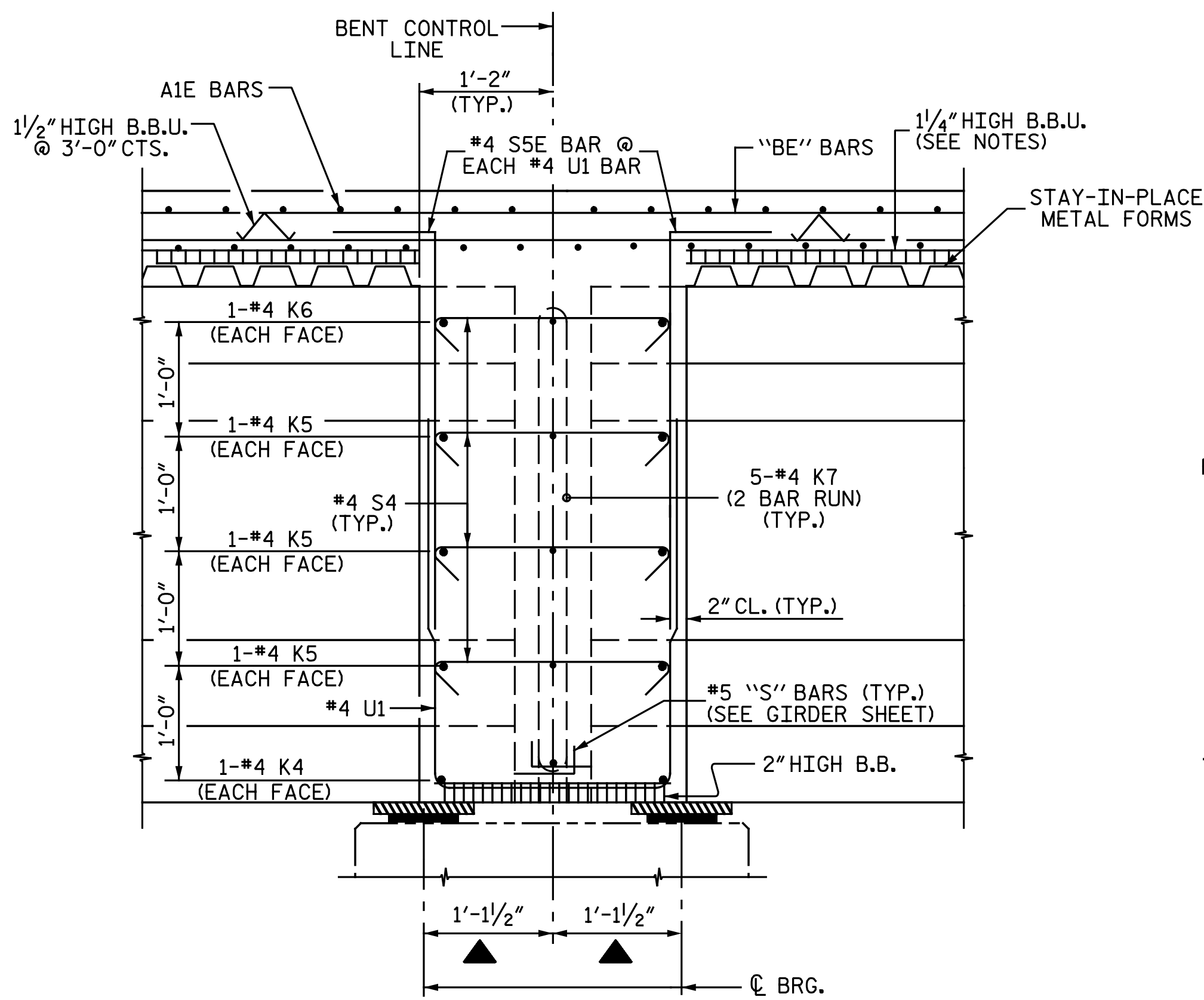
SECTION THRU END BENT DIAPHRAGM

* #5 G1E BAR MAY BE SHIFTED SLIGHTLY, AS NECESSARY, TO CLEAR REINFORCING STEEL AND STIRRUPS.



SECTION THRU BENT DIAPHRAGM

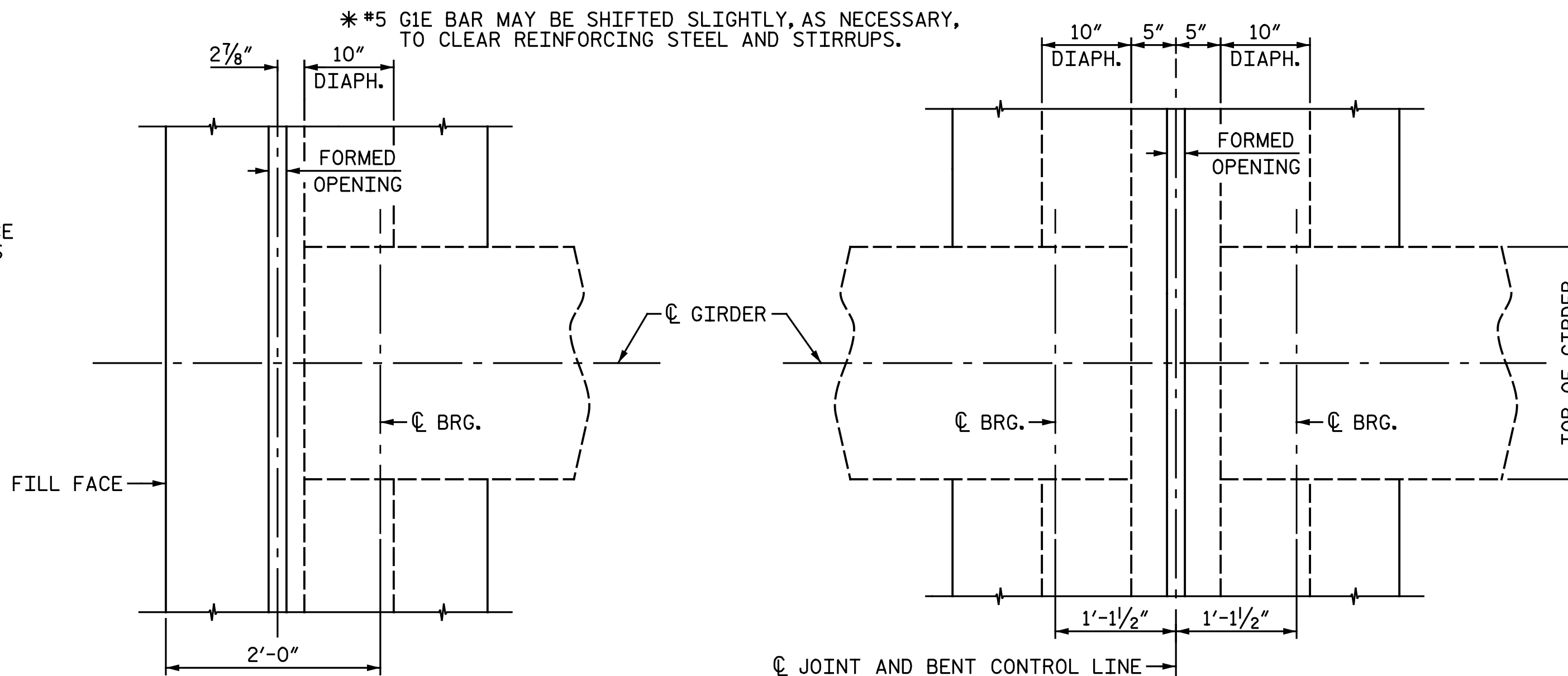
(INTERIOR BENTS 2, 5, 8 AND 11)



SECTION THRU CONTINUOUS BENT DIAPHRAGM

(INTERIOR BENTS 1, 3, 4, 6, 7, 9, 10 AND 12)

▲ DIMENSION MEASURED ALONG C GIRDER



END BENT DIAPHRAGM PLAN

INTERIOR BENT DIAPHRAGM PLAN

(INTERIOR BENTS 2, 5, 8 AND 11)

NOTES:

FOR SUPERSTRUCTURE NOTES, SEE "TYPICAL SECTION" SHEET 1 OF 3.

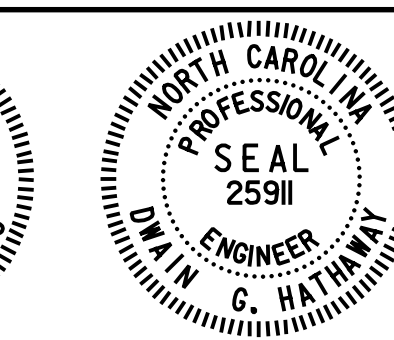
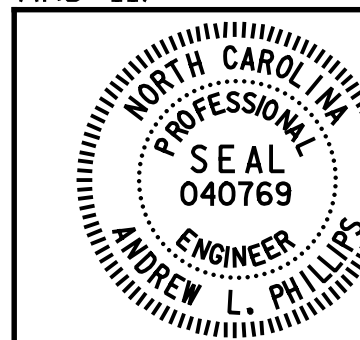
* EXPANSION JOINT SEAL IS REQUIRED BUT NOT SHOWN. SEE "EXPANSION JOINT SEAL DETAILS" SHEET.

PROJECT NO. R-2514D

JONES COUNTY

STATION: 389+47.50 -L-

SHEET 3 OF 3



DocuSigned by: Andrew Phillips
3/13/2015

DocuSigned by: Dwan Hathaway
3/13/2015



Michael Baker Engineering
8000 Regency Parkway, Suite 600
Cary, North Carolina 27518
NC License No.: F-1084

STATE OF NORTH CAROLINA
DEPARTMENT OF TRANSPORTATION
RALEIGH
SUPERSTRUCTURE
TYPICAL SECTION
DETAILS
RIGHT LANE

REVISIONS					
NO.	BY:	DATE:	NO.	BY:	DATE:
1			3		
2			4		

SHEET NO. S08-9
TOTAL SHEETS 68

DWG. 9 OF 68

nbspecks 4/14/27 PM 3/5/2015
File Name: Y:\P\Projects\NCDOT\R-2514D\Site 4\Draws\Right\Final\408_009_R2514D_SML_T503.dgn