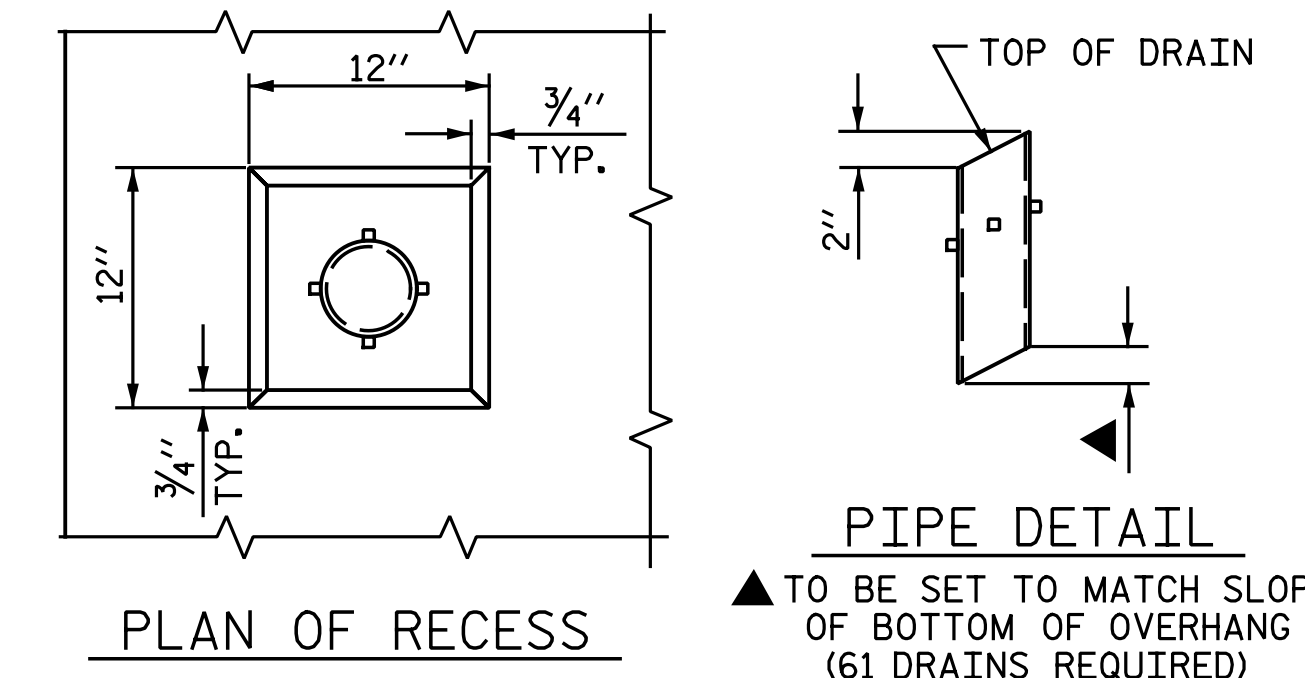
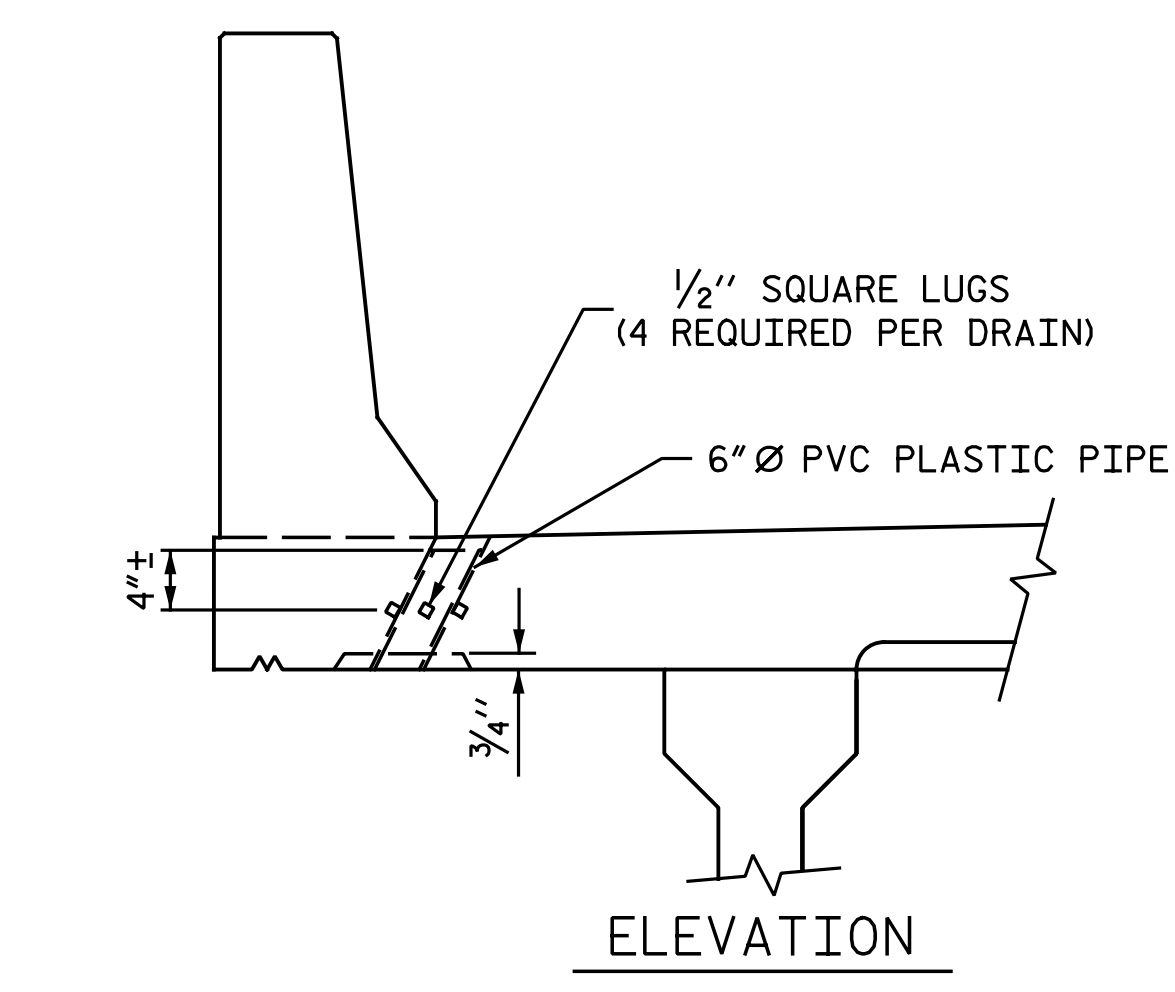


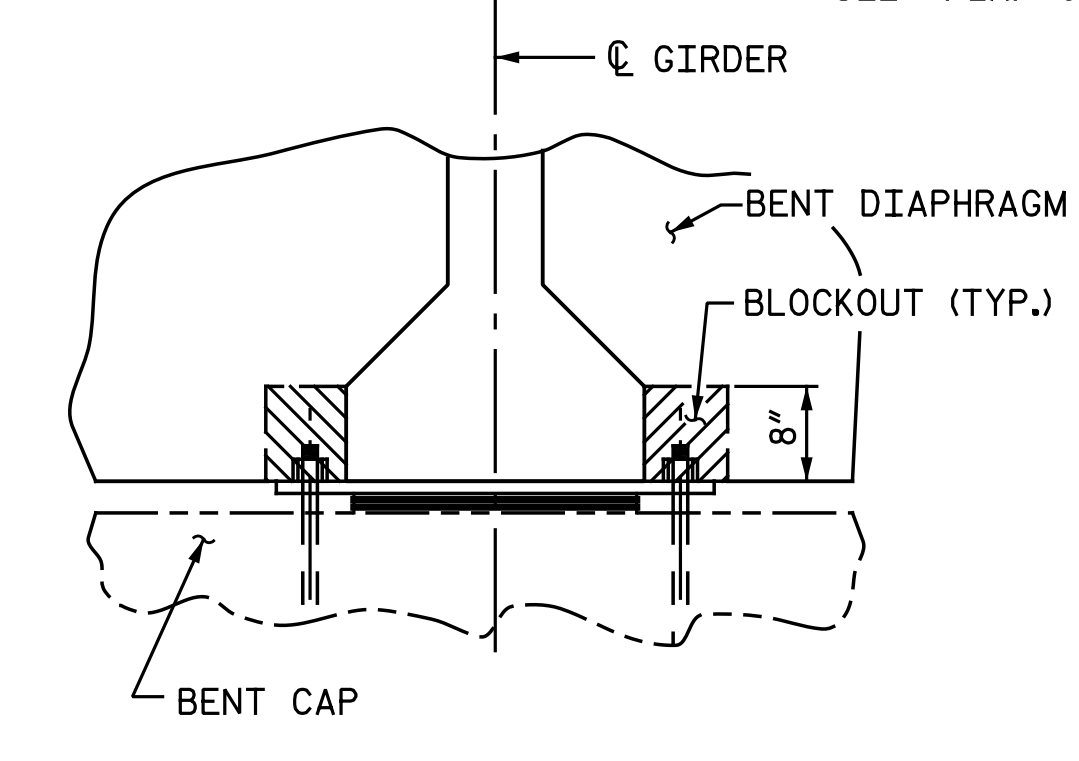
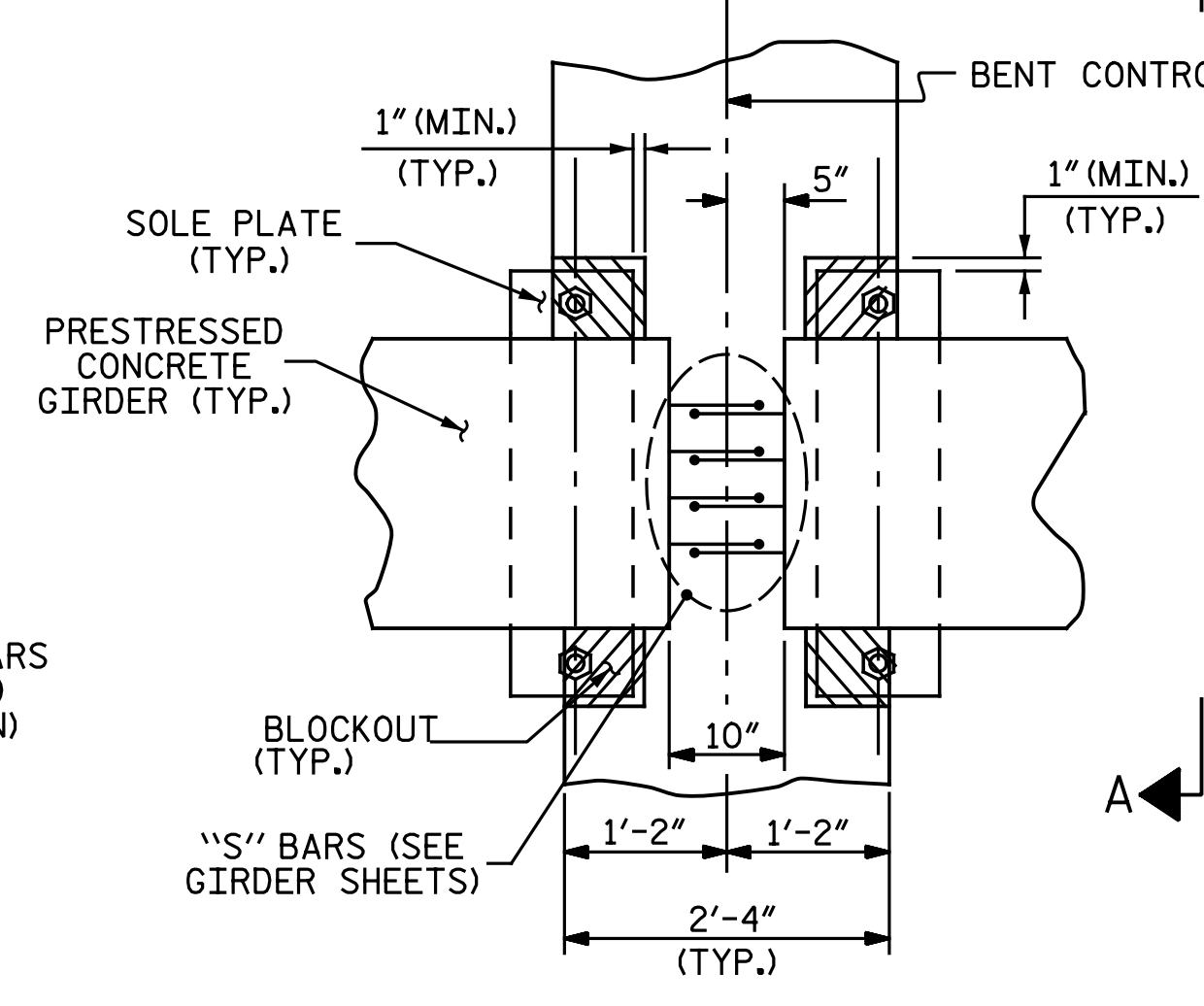
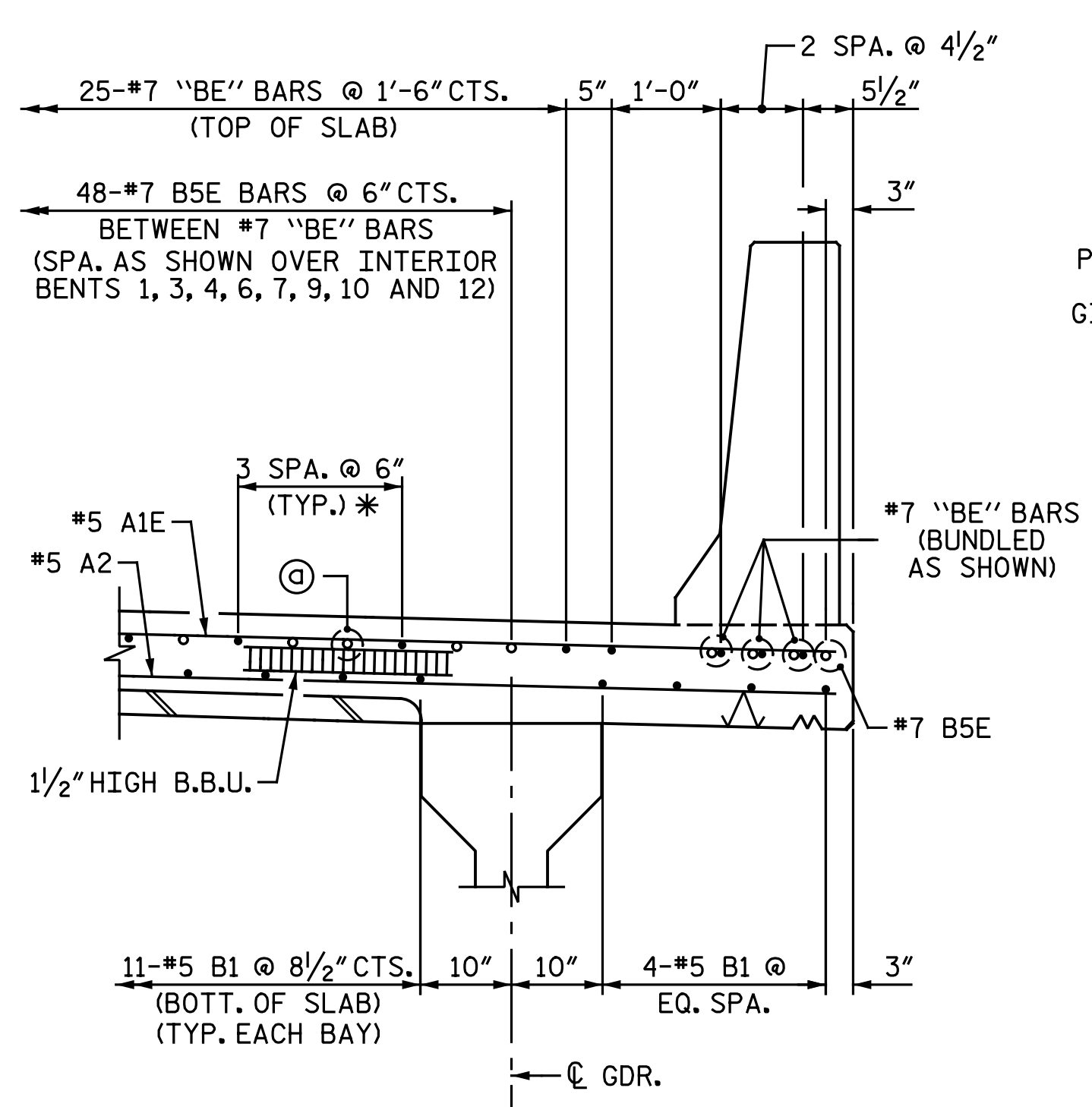
TYPICAL SECTION @ INTERMEDIATE DIAPHRAGM

NOTES:  
FOR SUPERSTRUCTURE NOTES, SEE "TYPICAL SECTION" SHEET 1 OF 3.



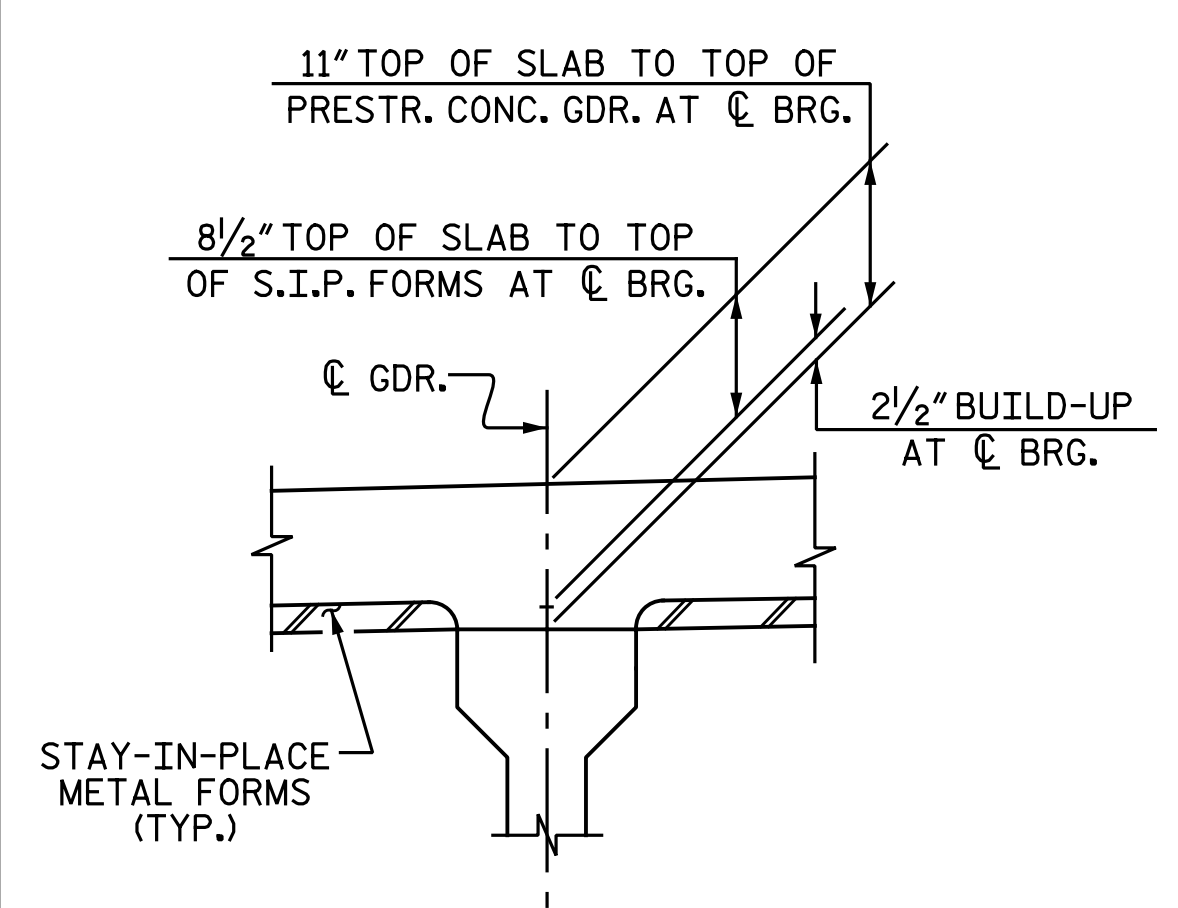
PIPE DETAIL

DRAIN DETAILS  
TOP OF FLOOR DRAINS TO BE SET 3/8" BELOW SURFACE OF SLAB.  
4 - 1/2" SQUARE LUGS TO BE GLUED TO THE P.V.C. PLASTIC PIPE AT EQUAL SPACES AROUND THE PIPE DRAIN APPROXIMATELY 4" FROM THE TOP OF THE PIPE.  
THE 6" Ø PVC PLASTIC PIPE AND FITTINGS SHALL BE SCHEDULE 40 AND CONFORM TO ASTM D1785.  
SEE "PLAN OF SPAN" FOR DRAIN LOCATIONS AND SPACING



BENT DIAPHRAGM BLOCKOUT DETAIL

PROJECT NO. R-2514D  
JONES COUNTY  
STATION: 389+47.50 -L-  
SHEET 2 OF 3



DETAIL A  
(TYP. EA. GDR. @ EA. BENT)

DETAIL B  
② 2-#7 "BE" NON-CONTINUOUS REINFORCING BARS BETWEEN CONTINUOUS REINFORCING OVER INTERIOR BENTS 1, 3, 4, 6, 7, 9, 10 AND 12 (SPA. AS SHOWN)  
\* TYP. SPACING OF NON-CONTINUOUS "BE" BARS BETWEEN CONTINUOUS "BE" BARS.  
○ INDICATES NON-CONTINUOUS REINFORCING STEEL OVER BENT.  
• INDICATES CONTINUOUS REINFORCING STEEL FOR END BENT 1, INTERIOR BENTS 2, 5, 8, 11 AND END BENT 2.

Professional Engineer seals for Andrew L. Phillips (Seal 040769) and Dwan Hathaway (Seal 25911). Both are dated 3/13/2015.

STATE OF NORTH CAROLINA  
DEPARTMENT OF TRANSPORTATION  
RALEIGH  
SUPERSTRUCTURE  
TYPICAL SECTION  
RIGHT LANE

REVISIONS						SHEET NO.	
NO.	BY:	DATE:	NO.	BY:	DATE:	S08-8	
1			3			TOTAL SHEETS	
2			4			68	

DRAWN BY: M. D. MAYHEW DATE: 8-12-13  
CHECKED BY: A. L. PHILLIPS DATE: 8-22-13



Michael Baker Engineering  
8000 Regency Parkway, Suite 600  
Cary, North Carolina 27516  
NC License No.: F-1084

nbspecks 1044307 AM 3/12/2015 File: Y:\Projects\NCDOT\R-2514D\Site 4\Drawings\Right\Final\408\_008\_R2514D\_SMU\_T502.dgn