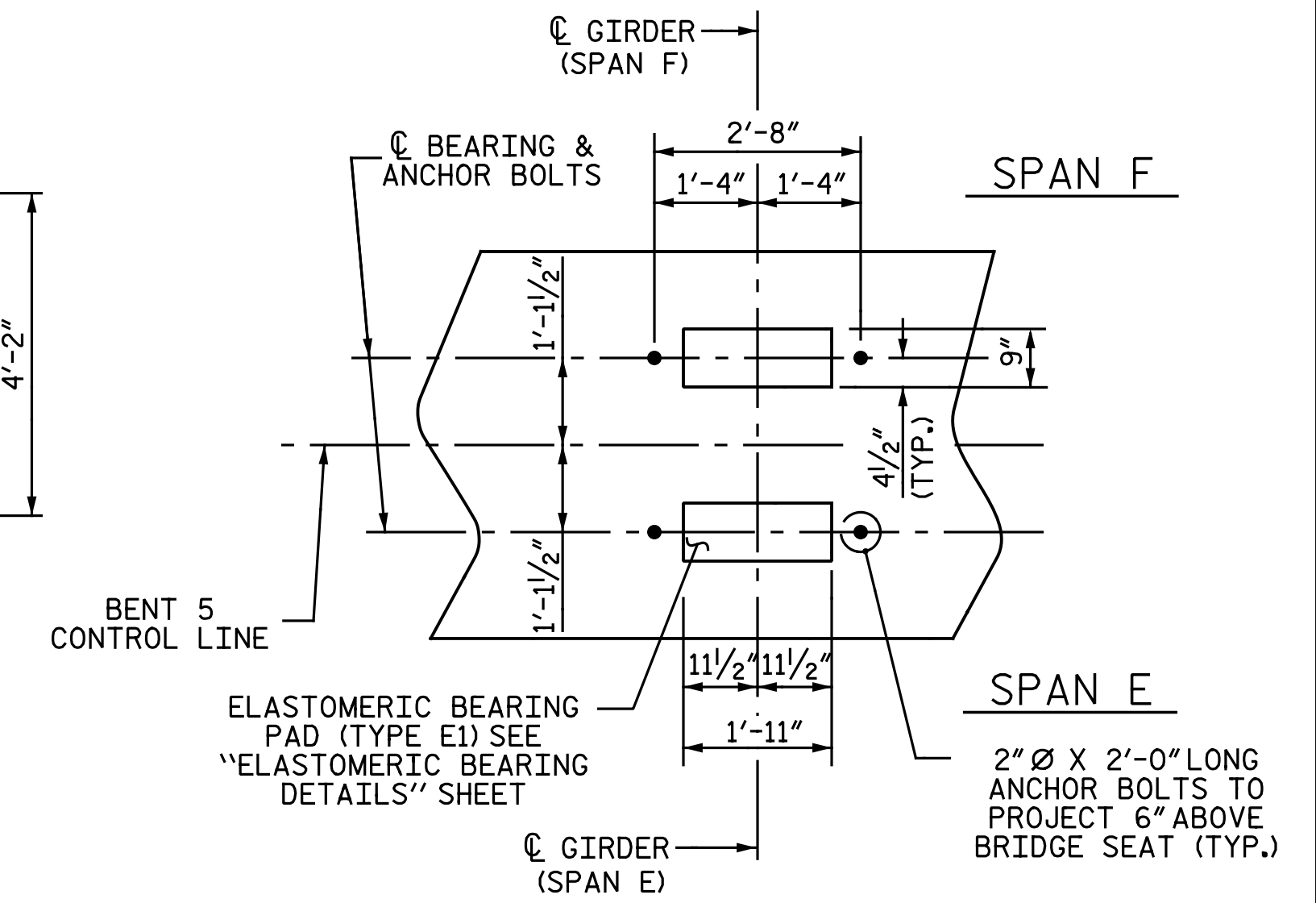


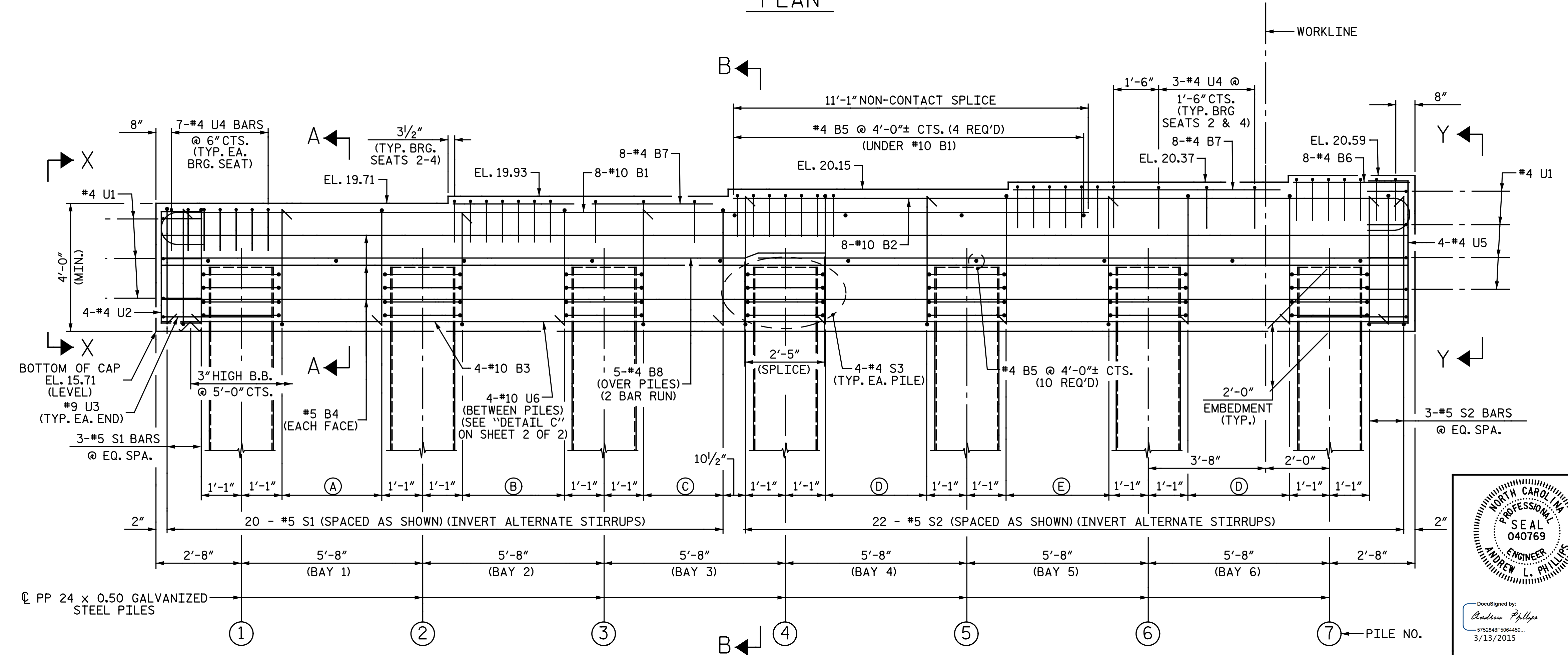
PLAN

NOTES:
 STIRRUPS IN CAP MAY BE SHIFTED AS NECESSARY TO CLEAR ANCHOR BOLTS.
 FOR "SECTION A-A", "SECTION B-B", "VIEW X-X" & "VIEW Y-Y", SEE SHEET 2 OF 2.
 THE TOP SURFACE AREAS OF THE BENT CAPS SHALL BE CURED IN ACCORDANCE WITH THE STANDARD SPECIFICATIONS EXCEPT THE MEMBRANE CURING COMPOUND METHOD SHALL NOT BE USED.
 GALVANIZE THE TOP A MINIMUM OF 26 FEET OF EACH INTERIOR BENT PILE. GALVANIZE IN ACCORDANCE WITH SECTION 1076 OF THE STANDARD SPECIFICATIONS.
 FOR ADDITIONAL INFORMATION AND NOTES, SEE "GENERAL DRAWING" SHEET 3 OF 5.



PLAN OF BEARINGS

ALL DIMENSIONS AND DETAILS SHOWN ARE TYPICAL FOR ALL BEARINGS @ EACH BRIDGE SEAT LOCATION.



ELEVATION

- (A) 5-#5 S1 BARS @ 10 1/2" SPACES
- (B) 8-#5 S1 BARS @ 6" SPACES
- (C) 4-#5 S1 BARS @ 10 1/2" SPACES
- (D) 5-#5 S2 BARS @ 10 1/2" SPACES
- (E) 8-#5 S2 BARS @ 6" SPACES

PROJECT NO. R-2514D
JONES COUNTY
 STATION: 389+47.50 -L-
 SHEET 1 OF 2

DocuSigned by:
Andrew Phillips
5752848F5084459
3/13/2015

DocuSigned by:
Dwan Hathaway
283786071DA0A60
3/13/2015

STATE OF NORTH CAROLINA
 DEPARTMENT OF TRANSPORTATION
 RALEIGH
 SUBSTRUCTURE
BENT 5
 LEFT LANE

DRAWN BY: N. B. SPEAKS DATE: 6-13-14
 CHECKED BY: A. M. HOUSTON DATE: 7-14-14

DWG. 44 OF 68

REVISIONS						SHEET NO. S07-44
NO.	BY:	DATE:	NO.	BY:	DATE:	
1			3			TOTAL SHEETS 68
2			4			