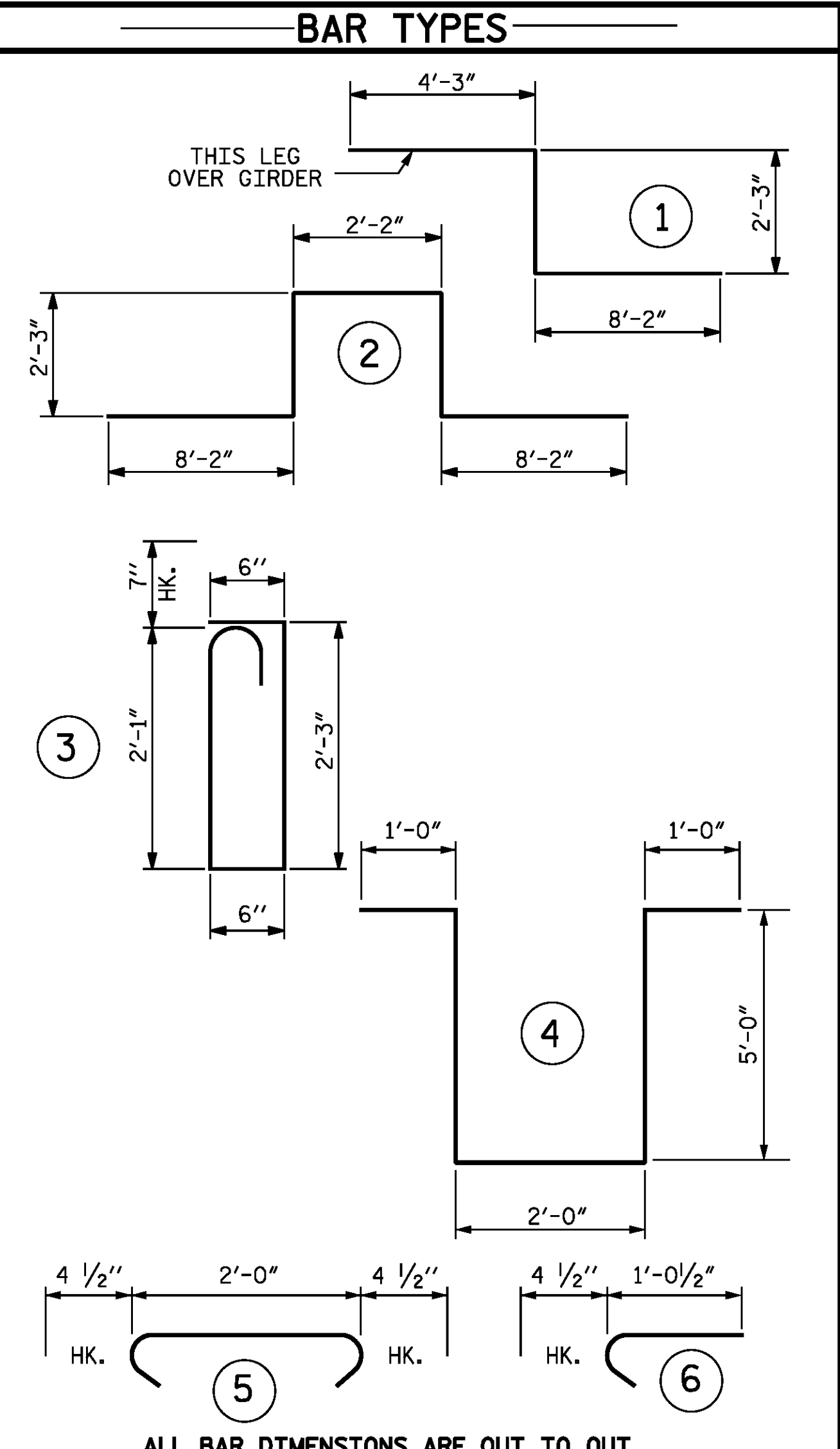


BAR NO.	SIZE	TYPE	LENGTH	WEIGHT	
A1	1030	5	STR.	40'-11"	43956
* A2	1030	5	STR.	40'-11"	43956
* B1	112	4	STR.	30'-0"	2244
B2	106	5	STR.	58'-2"	6431
* B3	224	8	STR.	41'-8"	24920
* B4	216	7	STR.	47'-9"	21082
* B5	84	4	STR.	22'-2"	1244
B6	424	7	STR.	40'-0"	34666
B7	159	5	STR.	22'-6"	3731
* G1	2	5	STR.	40'-11"	85
* J1	76	4	6	1'-5"	72
* K1	8	8	2	23'-0"	491
* K2	8	8	1	14'-8"	313
K3	40	4	STR.	18'-4"	490
K4	24	4	STR.	8'-0"	128
K5	24	4	STR.	9'-11"	159
K6	48	4	STR.	10'-6"	337
K7	24	4	STR.	9'-6"	152
* S1	60	5	3	5'-11"	370
S2	432	4	5	2'-9"	794
* U1	108	4	4	14'-0"	1010
REINFORCING STEEL				90844	
* EPOXY COATED REINFORCING STEEL				95787	

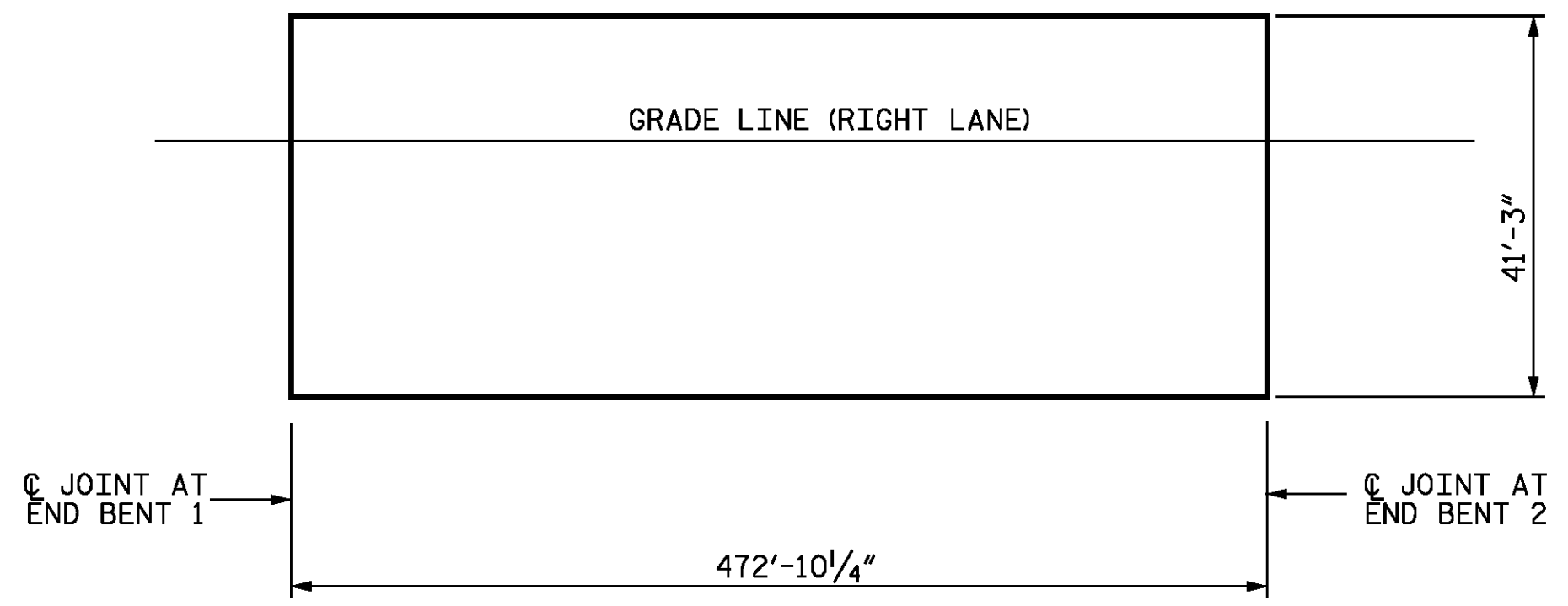


	CLASS AA CONCRETE (CU. YDS.)	REINFORCING STEEL (LBS.)	EPOXY COATED REINFORCING STEEL (LBS.)
POUR 1	126.3†		
POUR 2	146.8		
POUR 3	146.8		
POUR 4	146.8		
POUR 5	156.9†		
TOTALS**	723.6	90844	95787

**QUANTITIES FOR BARRIER RAIL ARE NOT INCLUDED
† INCLUDES CLOSURE POUR AT EXPANSION JOINT

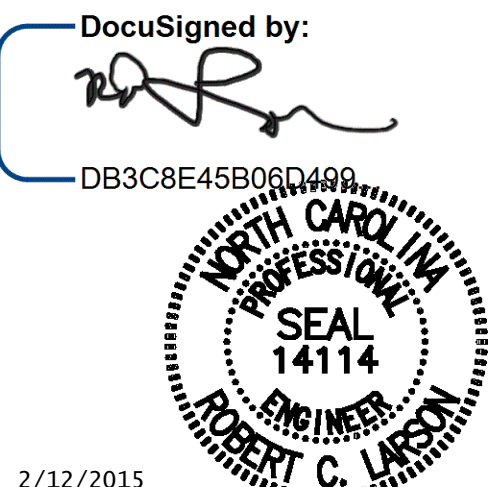
SUPERSTRUCTURE REINFORCING STEEL LENGTHS ARE BASED ON THE FOLLOWING MINIMUM SPLICE LENGTHS

BAR SIZE	SUPERSTRUCTURE EXCEPT APPROACH SLABS, PARAPET, AND BARRIER RAIL		APPROACH SLABS		PARAPET AND BARRIER RAIL
	EPOXY COATED	UNCOATED	EPOXY COATED	UNCOATED	
#4	2'-0"	1'-9"	2'-0"	1'-9"	2'-9"
#5	2'-6"	2'-2"	2'-6"	2'-2"	3'-5"
#6	3'-0"	2'-7"	3'-10"	2'-7"	4'-4"
#7	5'-3"	3'-6"			
#8	6'-10"	4'-7"			



LAYOUT FOR COMPUTING AREA REINFORCED CONCRETE DECK SLAB (SQ. FT. = 19,505)

GROOVING BRIDGE FLOORS	
APPROACH SLABS	1,668 SQ.FT.
BRIDGE DECK	16,510 SQ.FT.
TOTAL	18,178 SQ.FT.



PROJECT NO. R-2514D
JONES COUNTY
STATION: 373+02.50 -L-

STATE OF NORTH CAROLINA
DEPARTMENT OF TRANSPORTATION
RALEIGH
SUPERSTRUCTURE BILL OF MATERIAL

STD NO. BOM2 RIGHT LANE STR-#6

DESIGN ENGINEER OF RECORD:	DATE: 2/12/2015
ASSEMBLED BY: Z. SU	DATE: 02/13/14
CHECKED BY: R. C. LARSON	DATE: 03/14/14
DRAWN BY: JMB 5/87	REV. 8/16/99 RWW/LES
CHECKED BY: SJD 9/87	REV. 5/1/06 TLA/GM
	REV. 10/1/11 MAA/GM

KCI Associates of North Carolina, P.A.		REVISIONS			SHEET NO.
NO.	BY:	DATE:	NO.	BY:	DATE:
1			3		
2			4		
DWG. REF. NO. 21 OF 34					TOTAL SHEETS: S06-21 S06-34