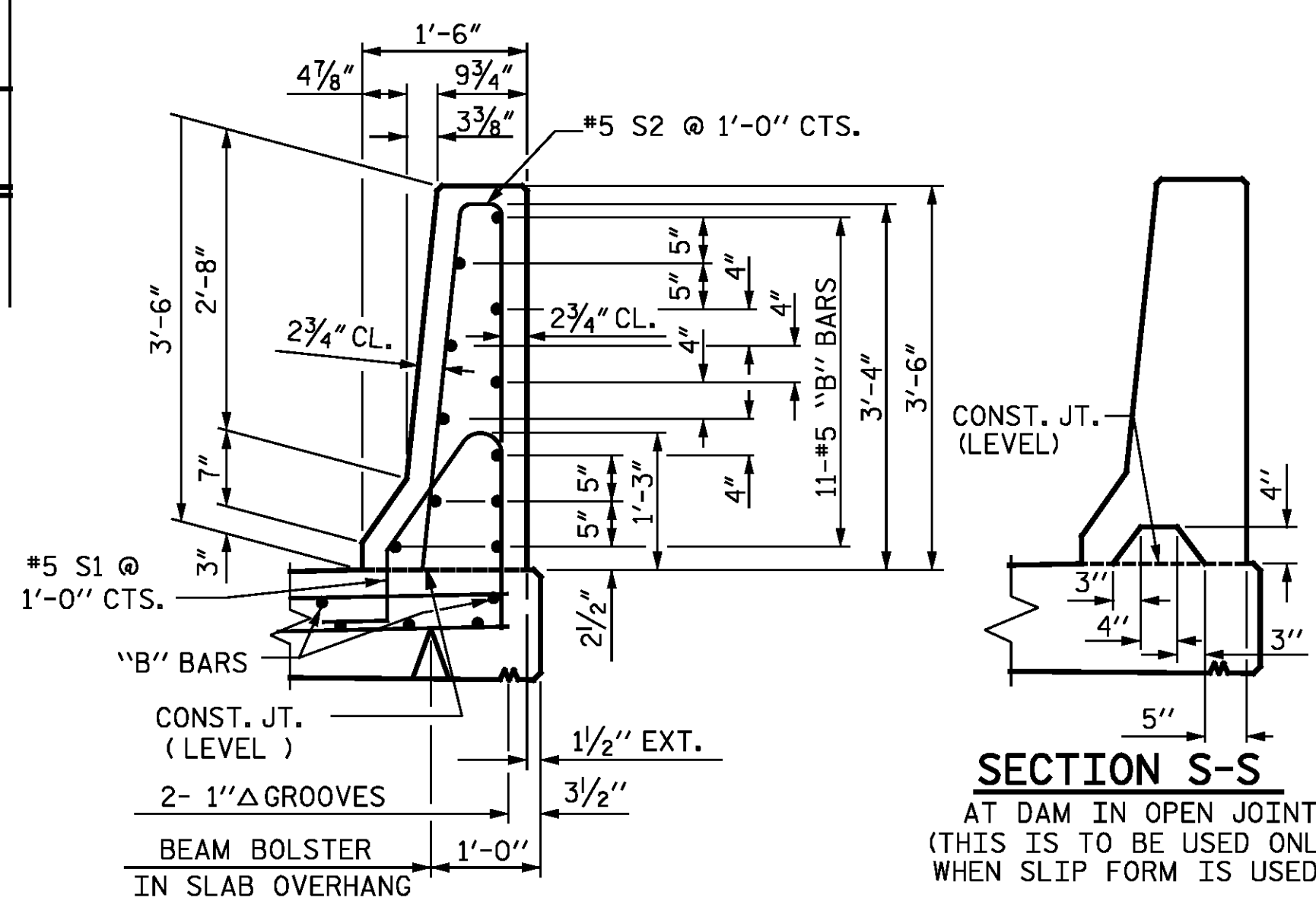


NOTES

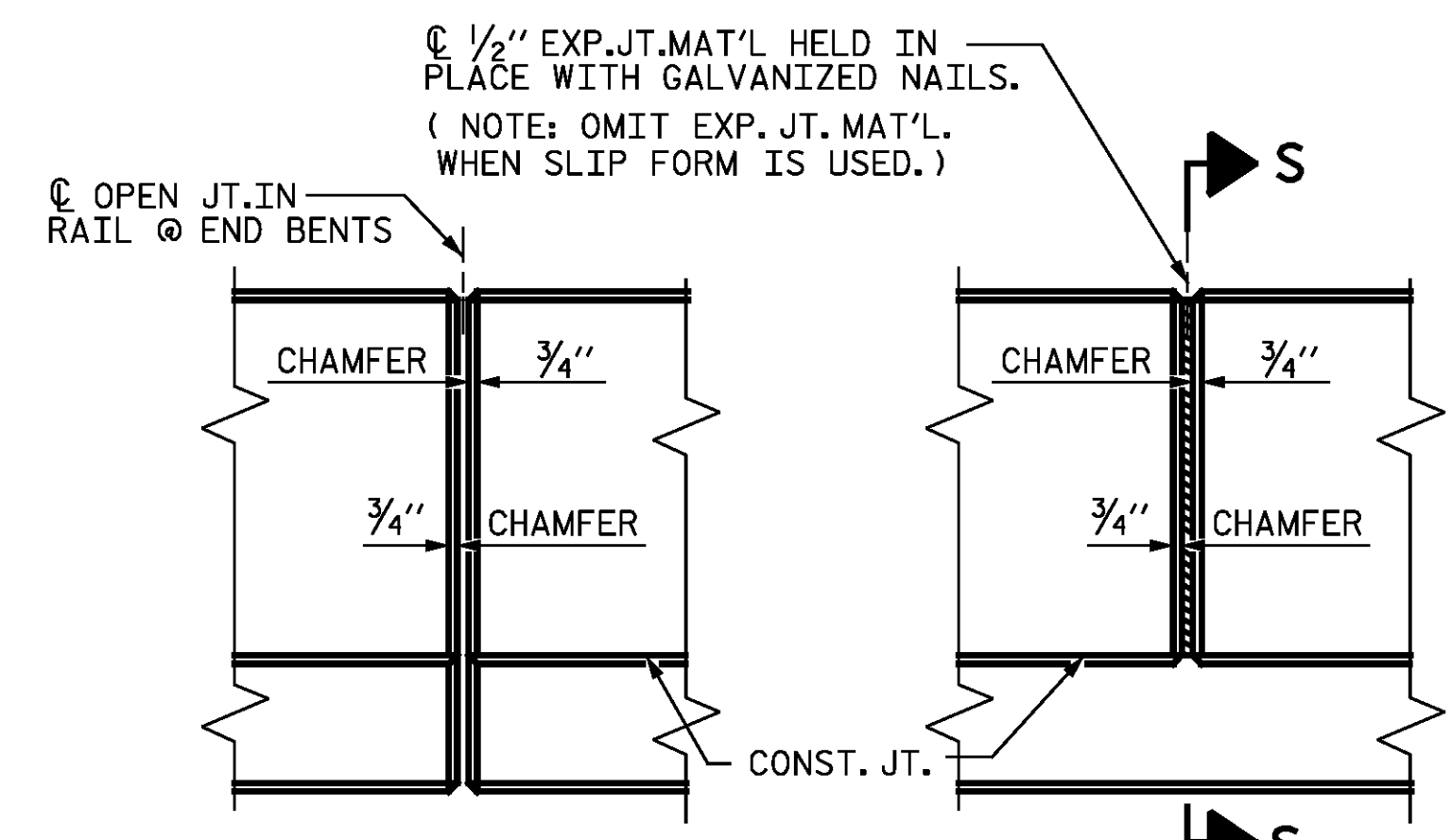
THE BARRIER RAIL SHALL NOT BE CAST UNTIL ALL SLAB CONCRETE HAS BEEN CAST AND HAS REACHED A MINIMUM COMPRESSIVE STRENGTH OF 3,000 PSI.

ALL REINFORCING STEEL IN BARRIER RAILS SHALL BE EPOXY COATED.

GROOVED CONTRACTION JOINTS, 1/2" IN DEPTH, SHALL BE TOOLED IN ALL EXPOSED FACES OF THE BARRIER RAIL AND IN ACCORDANCE WITH ARTICLE 825-10(B) OF THE STANDARD SPECIFICATIONS, THE CONTRACTION JOINT SHALL BE LOCATED AT EACH THIRD POINT BETWEEN BARRIER RAIL EXPANSION JOINTS. ONLY ONE CONTRACTION JOINT IS REQUIRED AT MIDPOINT OF BARRIER RAIL SEGMENTS LESS THAN 20 FEET IN LENGTH AND NO CONTRACTION JOINTS ARE REQUIRED FOR THOSE SEGMENTS LESS THAN 10 FEET IN LENGTH.

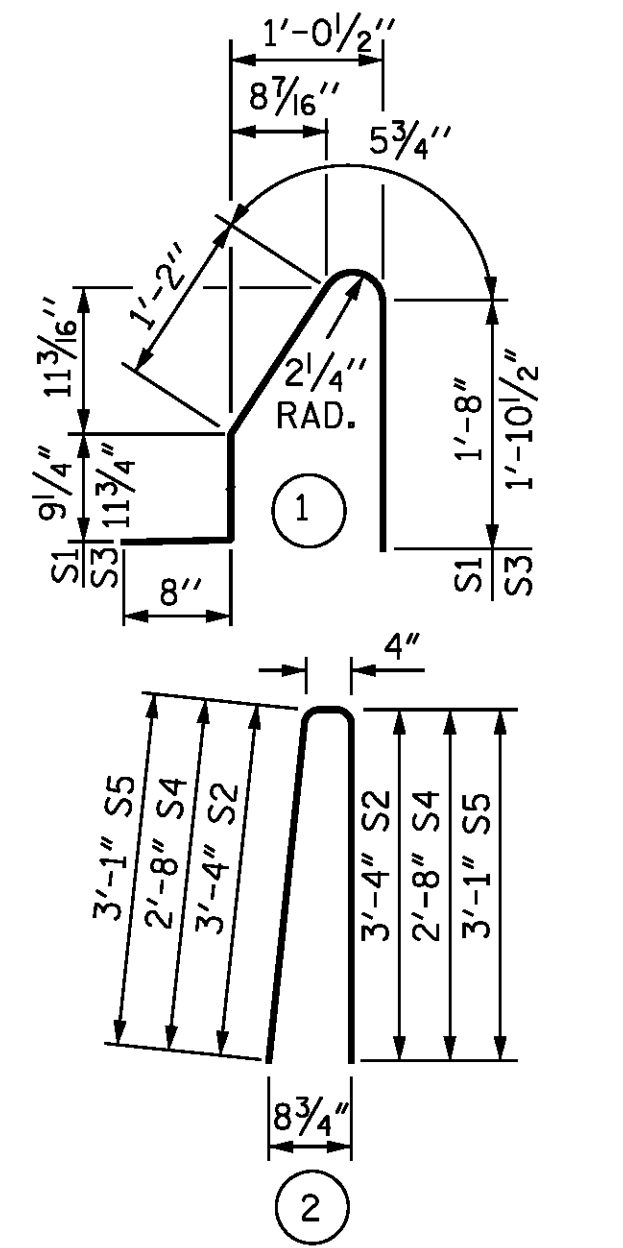


SECTION THRU RAIL



BARRIER RAIL DETAILS

BAR TYPES



ALL BAR DIMENSIONS ARE OUT TO OUT

BILL OF MATERIAL

FOR CONCRETE BARRIER RAIL ONLY

BAR	NO.	SIZE	TYPE	LENGTH	WEIGHT
*B1	264	#5	STR.	23'-7"	6494
*B2	44	#5	STR.	22'-0"	1010
*B3	132	#5	STR.	23'-0"	3167
*B4	44	#5	STR.	9'-8"	444
*S1	956	#5	1	4'-9"	4736
*S2	988	#5	2	7'-0"	7213
*S3	40	#5	1	5'-2"	216
*S4	4	#5	2	5'-8"	24
*S5	4	#5	2	6'-6"	27

* EPOXY COATED REINFORCING STEEL 23331

CLASS AA CONCRETE 133.4 CU. YDS.

CONCRETE BARRIER RAIL 986.00 LTN. FT.

REV. 10/1/11 MAA/GM
 REV. 7/12 MAA/GM
 REV. 10/12 MAA/GM

DESIGN ENGINEER OF RECORD DATE: 2/12/2015

DRAWN BY: Z. SU DATE: 02/13/14
 CHECKED BY: R.C. LARSON DATE: 03/14/14

DocuSigned by:

 DB3C8E45B06D499...
 2/12/2015

NORTH CAROLINA PROFESSIONAL ENGINEER SEAL 14114
 ROBERT C. LARSON

KCI Associates of North Carolina, P.A.
 DWG. REF. NO. 17 OF 34

PROJECT NO. R-2514D
 JONES COUNTY
 STATION: 373+02.50 -L-

STATE OF NORTH CAROLINA DEPARTMENT OF TRANSPORTATION RALEIGH

CONCRETE BARRIER RAIL

RIGHT LANE STR-#6

REVISIONS					
NO.	BY:	DATE:	NO.	BY:	DATE:
1			3		
2			4		

SHEET NO. S06-17
 TOTAL SHEETS S06-34