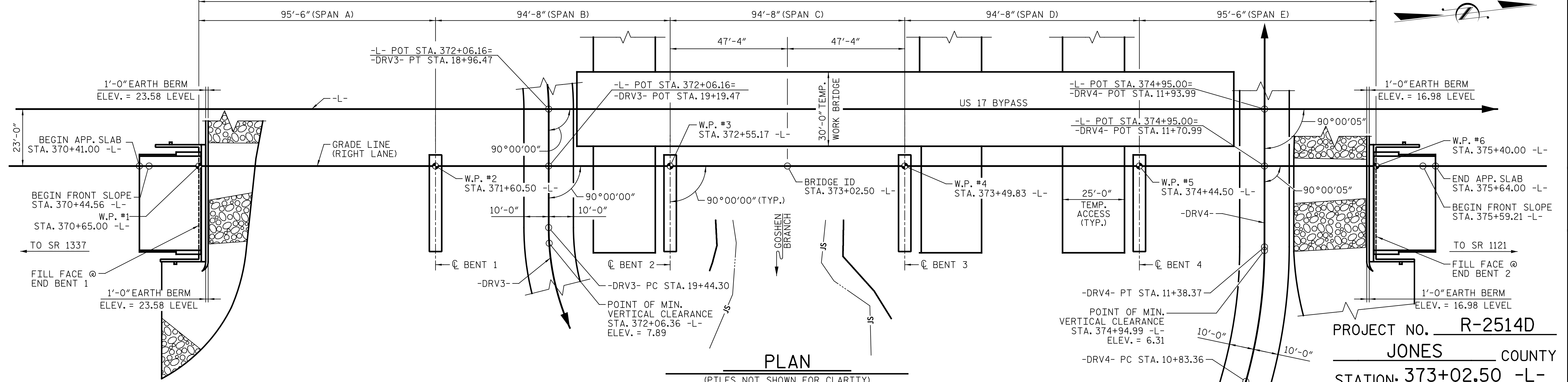


**SECTION ALONG GRADE LINE (RIGHT LANE)**

TOTAL LENGTH OF BRIDGE = 475'-0" (FILL FACE TO FILL FACE)



**PLAN**  
 (PILES NOT SHOWN FOR CLARITY)

**BRIDGE HYDRAULIC DATA**

DESIGN DISCHARGE	= 480 CFS
DESIGN FREQUENCY	= 50 YR.
DESIGN HW ELEV.	= 4.4 FT.
DRAINAGE AREA	= 2.1 SQ. MI.
BASE DISCHARGE	= 600 CFS
BASE FREQUENCY	= 100 YR.
BASE HW ELEV.	= 5.20 FT
OVERTOPPING DISCHARGE	= N/A
OVERTOPPING FREQUENCY	= 500+ YR.
OVERTOPPING ELEV.	= 15.8 FT.*

\* OVERTOPS DRAINAGE DIVIDE @ STA. 371+50 -L- (LT.)

**HORIZONTAL CURVE DATA -DRV3-**

PI STATION	18+63.66	20+23.73
Δ	39° 11' 47.4" (RT)	76° 55' 03.6" (LT)
D	57° 17' 44.8"	57° 17' 44.8"
L	68.41'	134.25'
T	35.60'	79.43'
R	100.00'	100.00'

**HORIZONTAL CURVE DATA -DRV4-**

PI STATION	11+11.04
Δ	15° 45' 34.5" (LT)
D	28° 38' 52.4"
L	55.01'
T	27.68'
R	200.00'

I HEREBY CERTIFY THESE PLANS ARE THE AS-BUILT PLANS

DESIGN ENGINEER OF RECORD: *[Signature]* DATE: 2/12/2015  
 DRAWN BY: D.R. CLAYTON DATE: 7/29/13  
 CHECKED BY: R.C. LARSON DATE: 04/03/14

PROJECT NO. **R-2514D**  
**JONES** COUNTY  
 STATION: **373+02.50 -L-**  
 SHEET 1 OF 4 BRIDGE NO. 100

STATE OF NORTH CAROLINA  
 DEPARTMENT OF TRANSPORTATION  
 RALEIGH  
 GENERAL DRAWING  
 FOR BRIDGE ON US 17 BYPASS  
 OVER GOSHEN BRANCH  
 BETWEEN SR 1337 AND SR 1121  
 RIGHT LANE STR-#6

REVISIONS	
NO.	DATE
1	2/12/2015
2	7/29/13
3	04/03/14

SHEET NO. S06-1  
 TOTAL SHEETS S06-34

**KCI Associates**  
 of North Carolina, P.A.  
 DWG. REF. NO. 1 OF 34