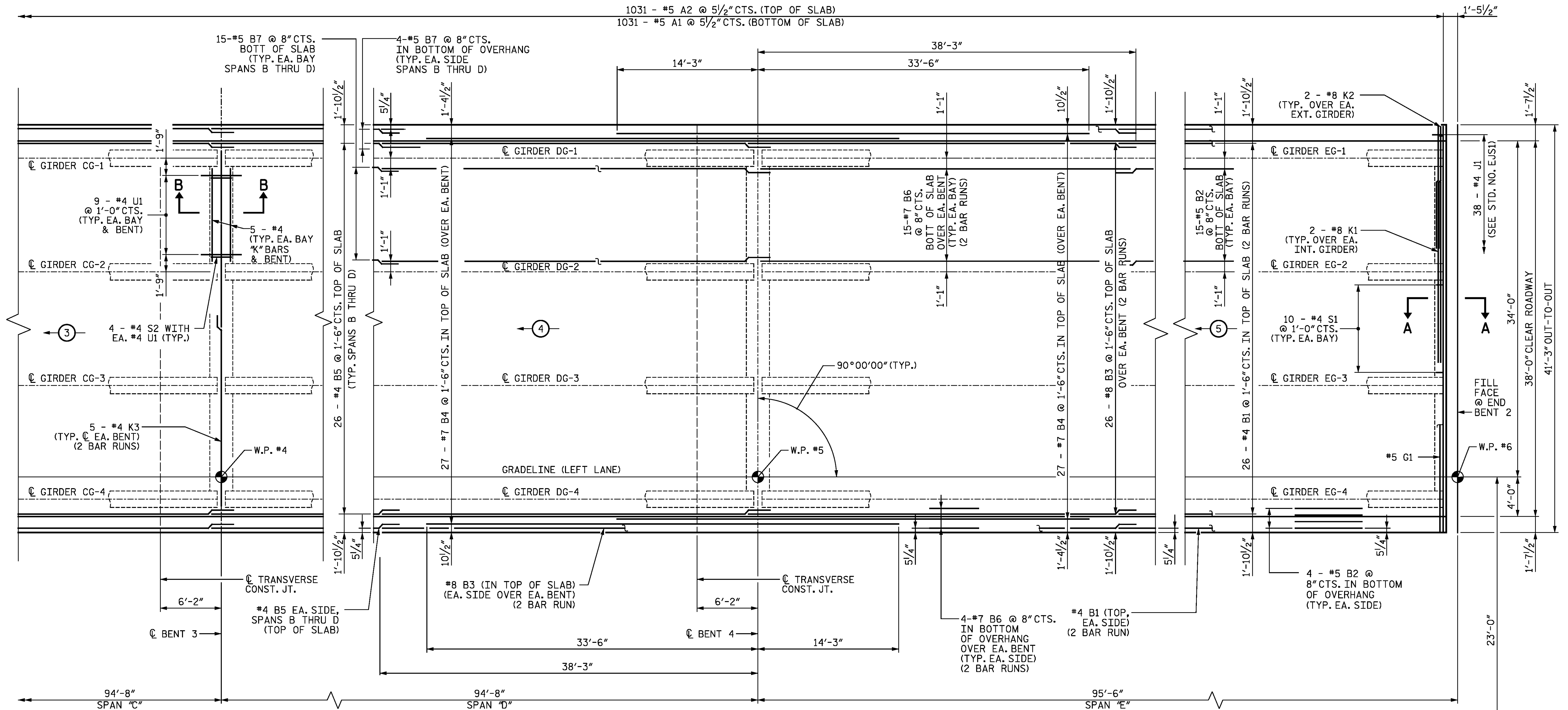
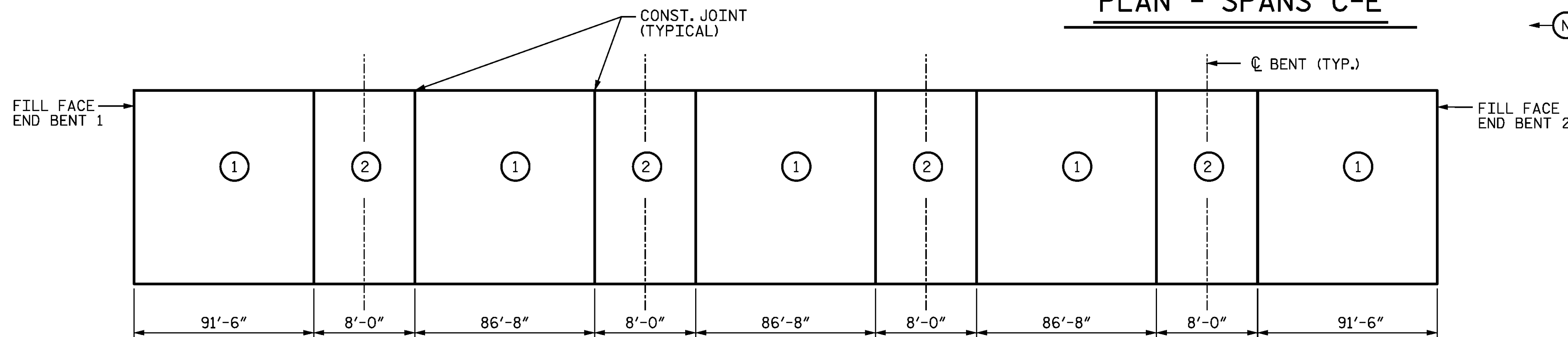


1031 - #5 A2 @ 5 1/2" CTS. (TOP OF SLAB)  
 1031 - #5 A1 @ 5 1/2" CTS. (BOTTOM OF SLAB)



PLAN - SPANS C-E



OPTIONAL POUR SEQUENCE

INDICATES POUR SEQUENCE AND DIRECTION  
 SEE STD EJS1 FOR CLOSURE POURS AT EXPANSION JOINT IN SPANS A AND E  
 SEE SUPERSTRUCTURE BILL OF MATERIAL FOR REINFORCING SPLICE LENGTHS.

SEE STD EJS1 FOR CLOSURE POURS AT EXPANSION JOINT IN SPANS A AND E.  
 POUR ② CANNOT BE STARTED UNTIL BOTH ADJACENT POURS ① HAVE REACHED A MINIMUM STRENGTH OF 3000 PSI.

PROJECT NO. R-2514D  
JONES COUNTY  
 STATION: 373+02.50 -L-

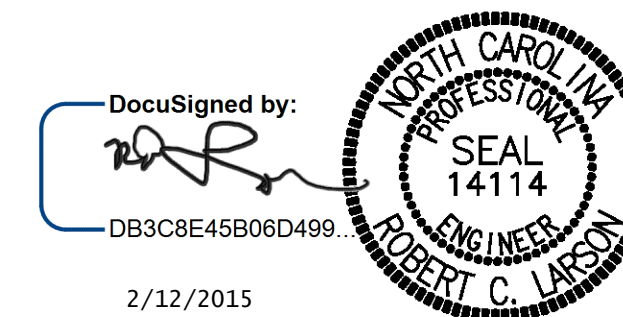
SHEET 2 OF 2

STATE OF NORTH CAROLINA  
 DEPARTMENT OF TRANSPORTATION  
 RALEIGH

SUPERSTRUCTURE  
 PLAN OF SPANS

LEFT LANE STR-#5

DESIGN ENGINEER OF RECORD: DATE: 2/12/2015  
 DRAWN BY: Z. SU DATE: 11/19/13  
 CHECKED BY: R. C. LARSON DATE: 01/16/14



2/12/2015

KCI Associates  
 of North Carolina, P.A.  
 DWG. REF. NO. 9 OF 34

REVISIONS						SHEET NO. S05-9
NO.	BY:	DATE:	NO.	BY:	DATE:	
1			3			TOTAL SHEETS S05-34
2			4			