

PLAN @ END BENT #1
 PLAN @ END BENT #2
 DIMENSIONS SHOWN ARE TYPICAL FOR BOTH APPROACH SLABS

NOTES

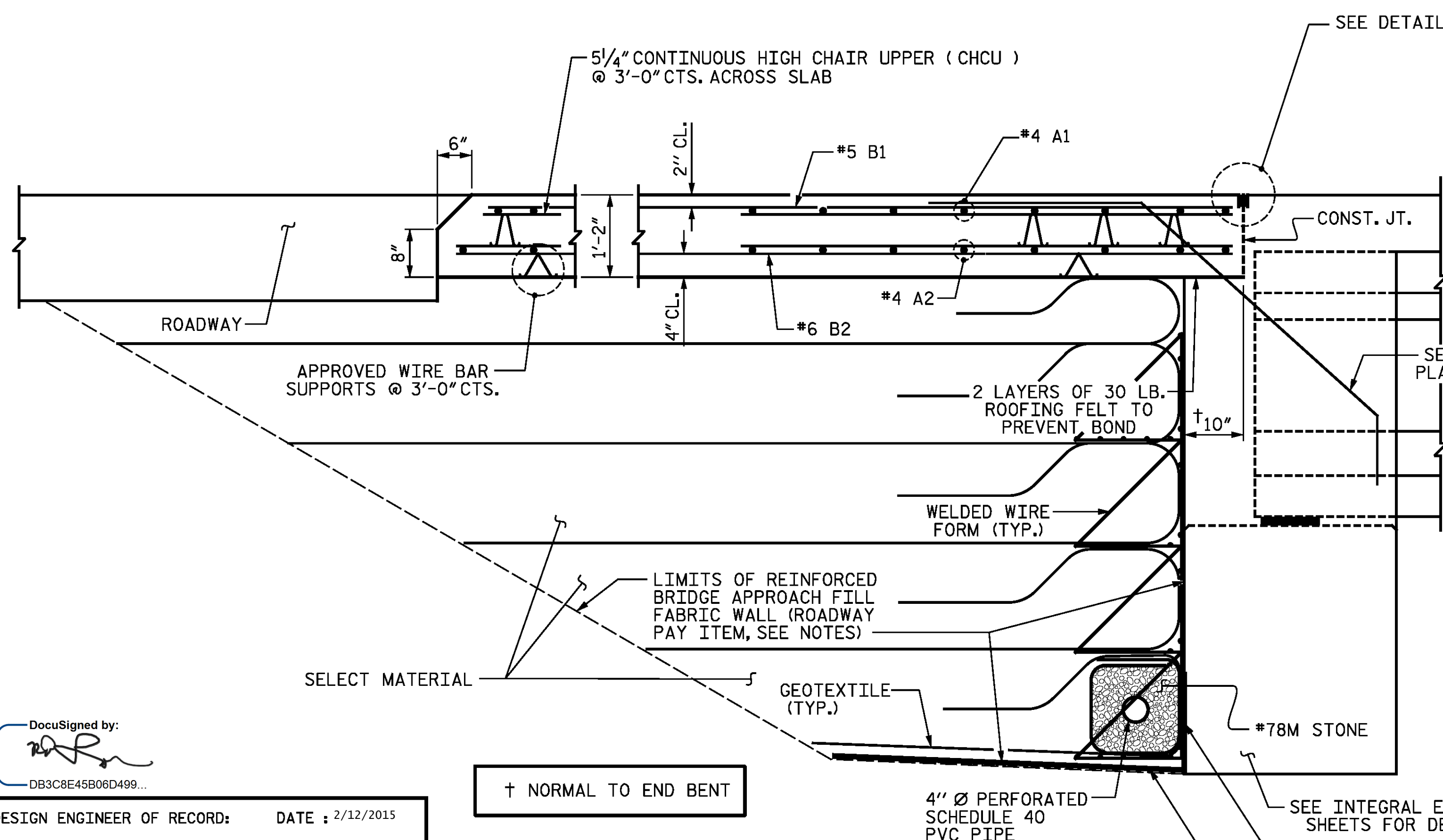
APPROACH SLAB SHALL NOT BE CONSTRUCTED PRIOR TO COMPLETION OF THE BRIDGE DECK.

FOR REINFORCED BRIDGE APPROACH FILL FABRIC WALL INCLUDING GEOTEXTILE, IMPERMEABLE GEOMEMBRANE, 4" Ø DRAINAGE PIPE, #78M STONE, WELDED WIRE FORM, AND SELECT MATERIAL, SEE ROADWAY PLANS.

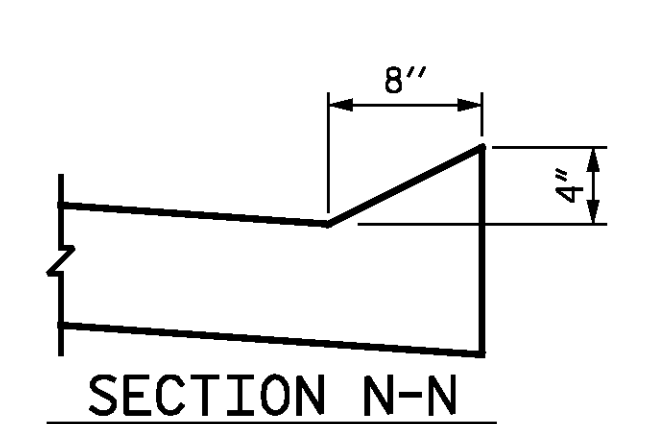
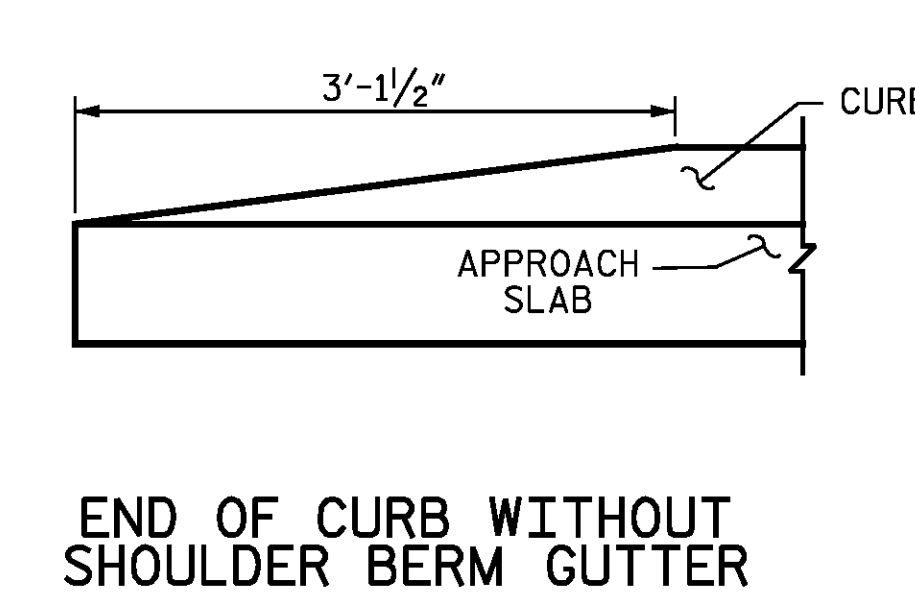
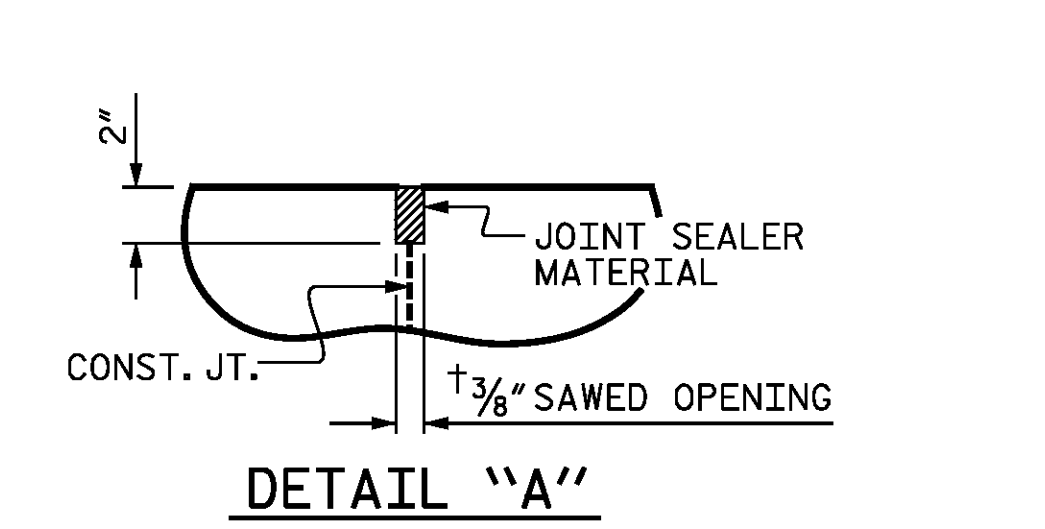
AREA BETWEEN THE WINGWALL AND APPROACH SLAB SHALL BE GRADED TO DRAIN THE WATER AWAY FROM THE FILL FACE OF THE BRIDGE AND SHALL BE PAVED. SEE ROADWAY PLANS.

THE JOINT OPENING AT THE APPROACH SLAB/DECK INTERFACE SHALL BE SAWED NO MORE THAN 12 HOURS AFTER THE APPROACH SLAB IS CAST. THE JOINT SHALL BE CLEANED OF ALL DEBRIS BEFORE THE SEALANT IS APPLIED. THE JOINT SEALER MATERIAL SHALL CONFORM TO THE REQUIREMENTS OF SECTION 1028-3 OF THE STANDARD SPECIFICATIONS.

BILL OF MATERIAL					
FOR ONE APPROACH SLAB (2 REQ'D)					
BAR	NO.	SIZE	TYPE	LENGTH	WEIGHT
* A1	52	#4	STR	21'-3"	738
A2	52	#4	STR	21'-2"	735
* B1	78	#5	STR	24'-1"	1959
B2	78	#6	STR	24'-7"	2882
REINFORCING STEEL					3617 LBS.
* EPOXY COATED REINFORCING STEEL					2697 LBS.
CLASS AA CONCRETE					42.6 C.Y.



SECTION THRU SLAB



DocuSigned by:
 DB3C8E45B06D499...

DESIGN ENGINEER OF RECORD: DATE: 2/12/2015

DRAWN BY: E. C. DECOLA DATE: 02/14/14
 CHECKED BY: R. C. LARSON DATE: 03/08/14

DRAWN BY: TLA 10/05 REV. 10/1/11 MAA/GM
 CHECKED BY: GM 5/06 REV. 12/21/11 MAA/GM
 REV. 6/13 MAA/GM

DocuSigned by:
 DB3C8E45B06D499...

2/12/2015

PROFESSIONAL ENGINEER
 SEAL 14114
 ROBERT C. LARSON

PROJECT NO. R-2514D
 JONES COUNTY
 STATION: 363+38.90 -L-

SHEET 1 OF 2

STATE OF NORTH CAROLINA DEPARTMENT OF TRANSPORTATION STANDARD					
BRIDGE APPROACH SLAB FOR INTEGRAL ABUTMENT					
STD. NO. BAS5 RIGHT LANE STR-#4					
REVISIONS					
NO.	BY:	DATE:	NO.	BY:	DATE:
1			3		
2			4		

SHEET NO. S04-22
 TOTAL SHEETS S04-23

KCI Associates of North Carolina, P.A.
 DWG. REF. NO. 22 OF 23