

**NOTES**

APPROACH SLAB SHALL NOT BE CONSTRUCTED PRIOR TO COMPLETION OF THE BRIDGE DECK.

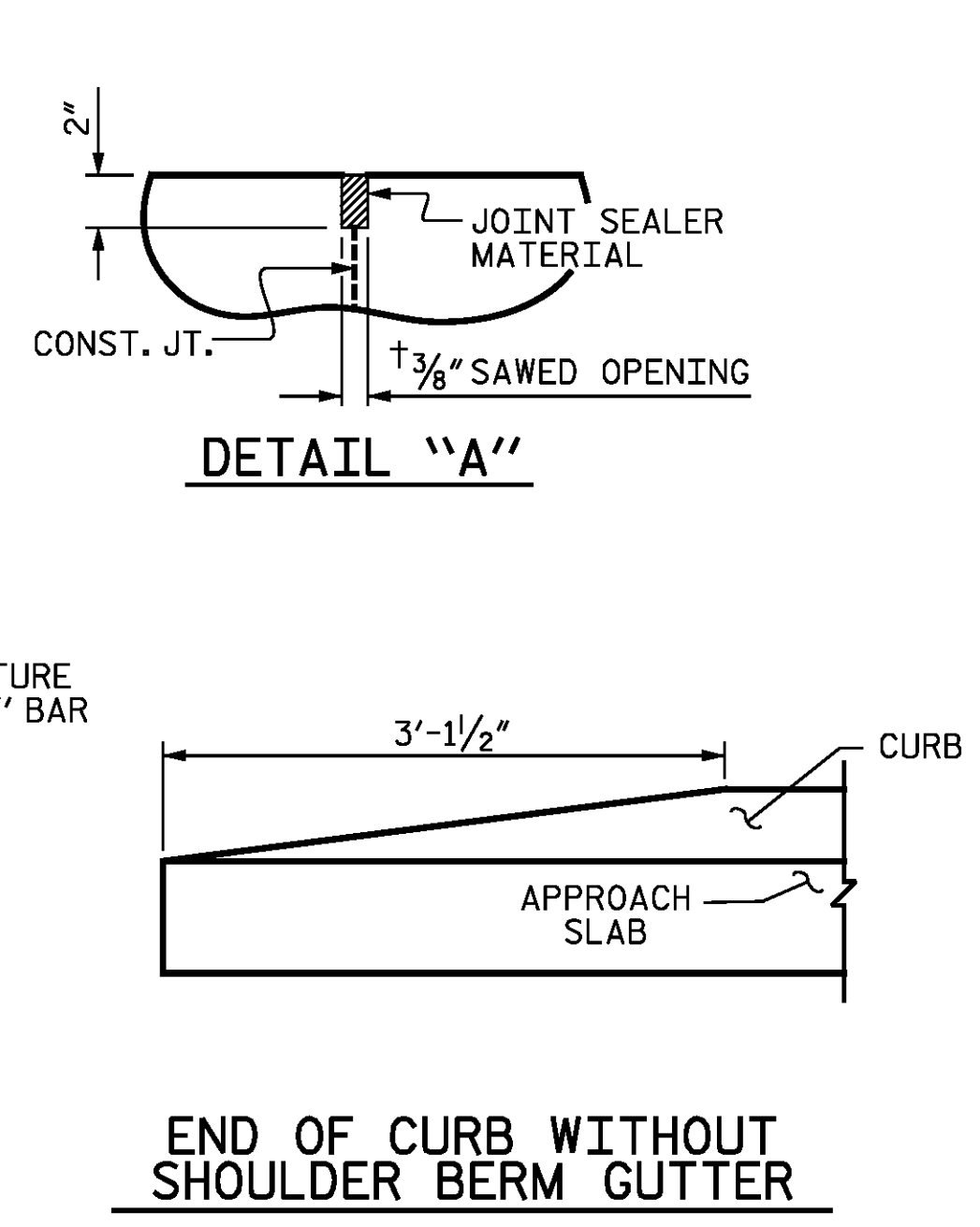
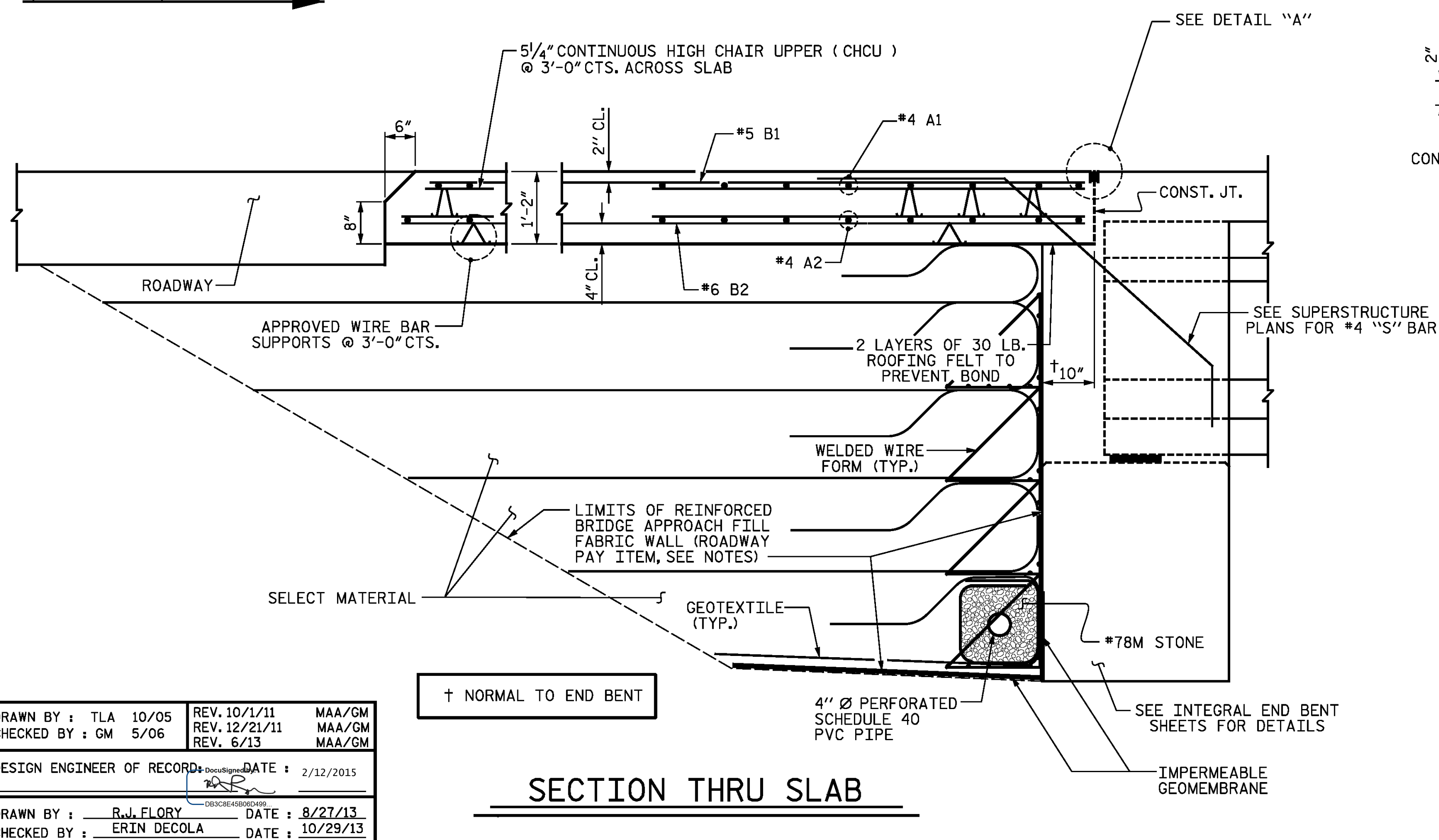
FOR REINFORCED BRIDGE APPROACH FILL FABRIC WALL INCLUDING GEOTEXTILE, IMPERMEABLE GEOMEMBRANE, 4" Ø DRAINAGE PIPE, #78M STONE, WELDED WIRE FORM, AND SELECT MATERIAL, SEE ROADWAY PLANS.

AREA BETWEEN THE WINGWALL AND APPROACH SLAB SHALL BE GRADED TO DRAIN THE WATER AWAY FROM THE FILL FACE OF THE BRIDGE AND SHALL BE PAVED. SEE ROADWAY PLANS.

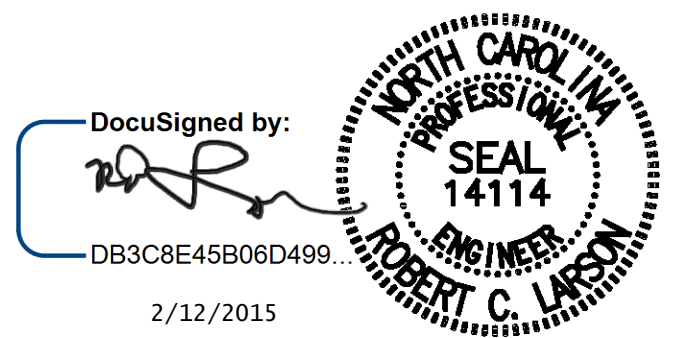
THE JOINT OPENING AT THE APPROACH SLAB/DECK INTERFACE SHALL BE SAWED NO MORE THAN 12 HOURS AFTER THE APPROACH SLAB IS CAST. THE JOINT SHALL BE CLEANED OF ALL DEBRIS BEFORE THE SEALANT IS APPLIED. THE JOINT SEALER MATERIAL SHALL CONFORM TO THE REQUIREMENTS OF SECTION 1028-3 OF THE STANDARD SPECIFICATIONS.

**BILL OF MATERIAL**  
**FOR ONE APPROACH SLAB (2 REQ'D)**

BAR	NO.	SIZE	TYPE	LENGTH	WEIGHT
* A1	52	#4	STR	21'-3"	738
A2	52	#4	STR	21'-2"	735
* B1	78	#5	STR	24'-1"	1959
B2	78	#6	STR	24'-7"	2882
REINFORCING STEEL					3617 LBS.
* EPOXY COATED REINFORCING STEEL					2697 LBS.
CLASS AA CONCRETE					42.6 C.Y.



PROJECT NO. R-2514D  
JONES COUNTY  
 STATION: 363+38.90 -L-  
 SHEET 1 OF 3



STATE OF NORTH CAROLINA  
 DEPARTMENT OF TRANSPORTATION  
 RALEIGH  
 STANDARD  
**BRIDGE APPROACH SLAB FOR INTEGRAL ABUTMENT**  
 STD. NO. BAS5 LEFT LANE STR-#3

DRAWN BY : TLA 10/05	REV. 10/1/11	MAA/GM
CHECKED BY : GM 5/06	REV. 12/21/11	MAA/GM
DESIGN ENGINEER OF RECORD	DATE : 2/12/2015	
DRAWN BY : R.J. FLORY	DATE : 8/27/13	
CHECKED BY : ERIN DECOLA	DATE : 10/29/13	

REVISIONS		SHEET NO.	
NO.	DATE	NO.	DATE
1		3	
2		4	

TOTAL SHEETS: 503-22  
 503-23

KCI Associates  
 of North Carolina, P.A.  
 DWG. REF. NO. 22 OF 23