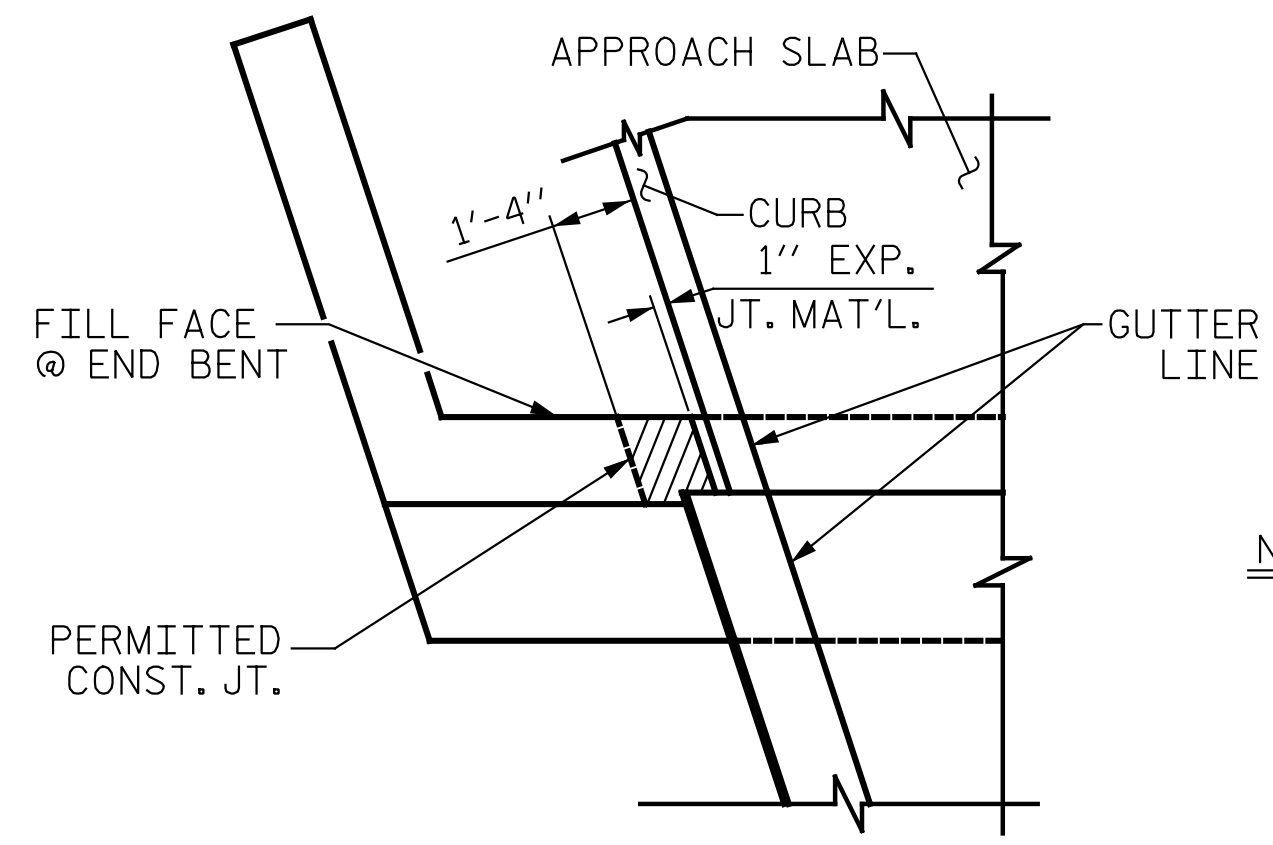


SECTION A-A

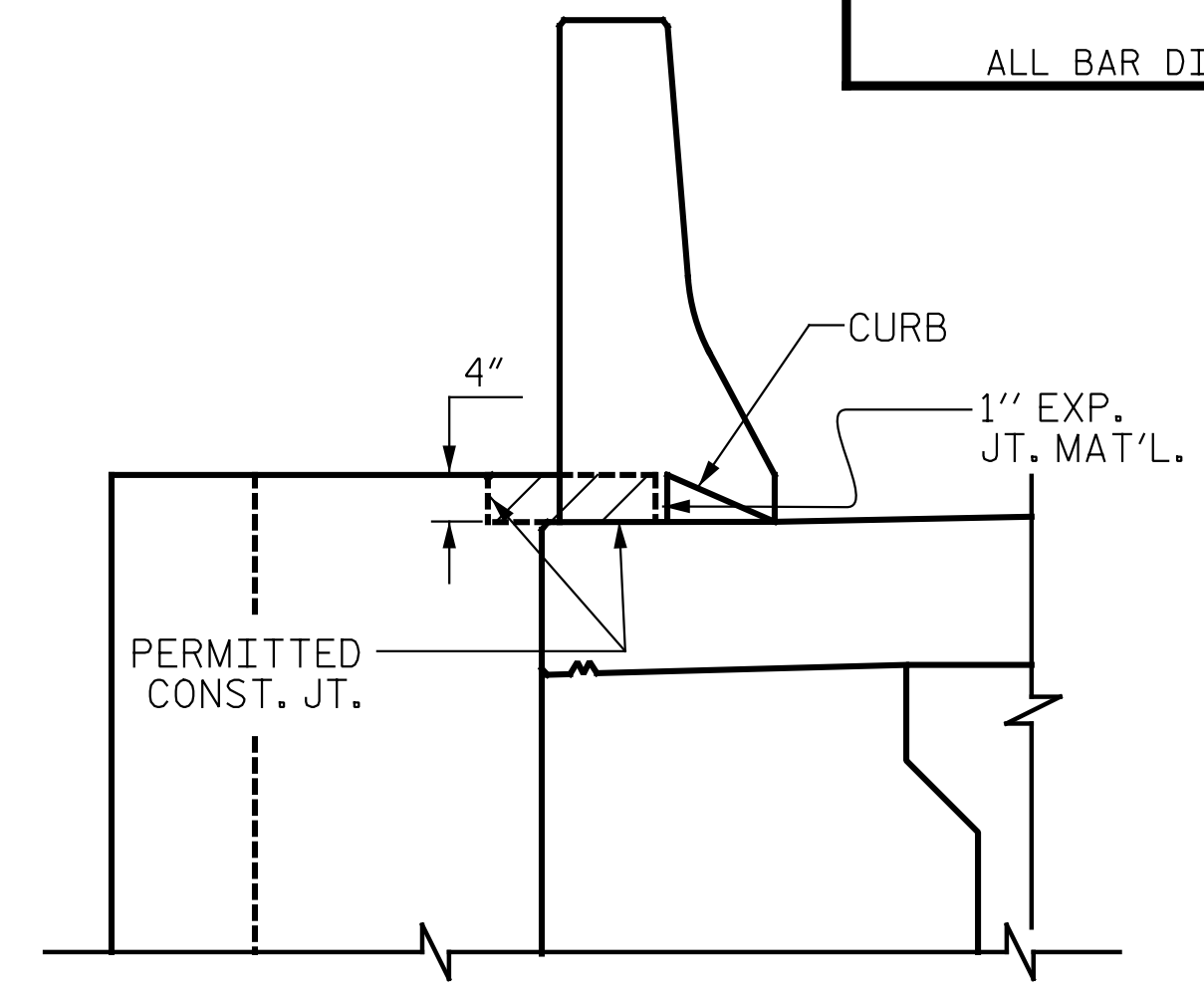
* THE TOP SURFACE OF THE CAP AND WINGS SHALL BE RAKED TO A DEPTH OF 1/4" EXCEPT THE BEARING AREAS AND CAP OUTSIDE OF SUPERSTRUCTURE.



PLAN

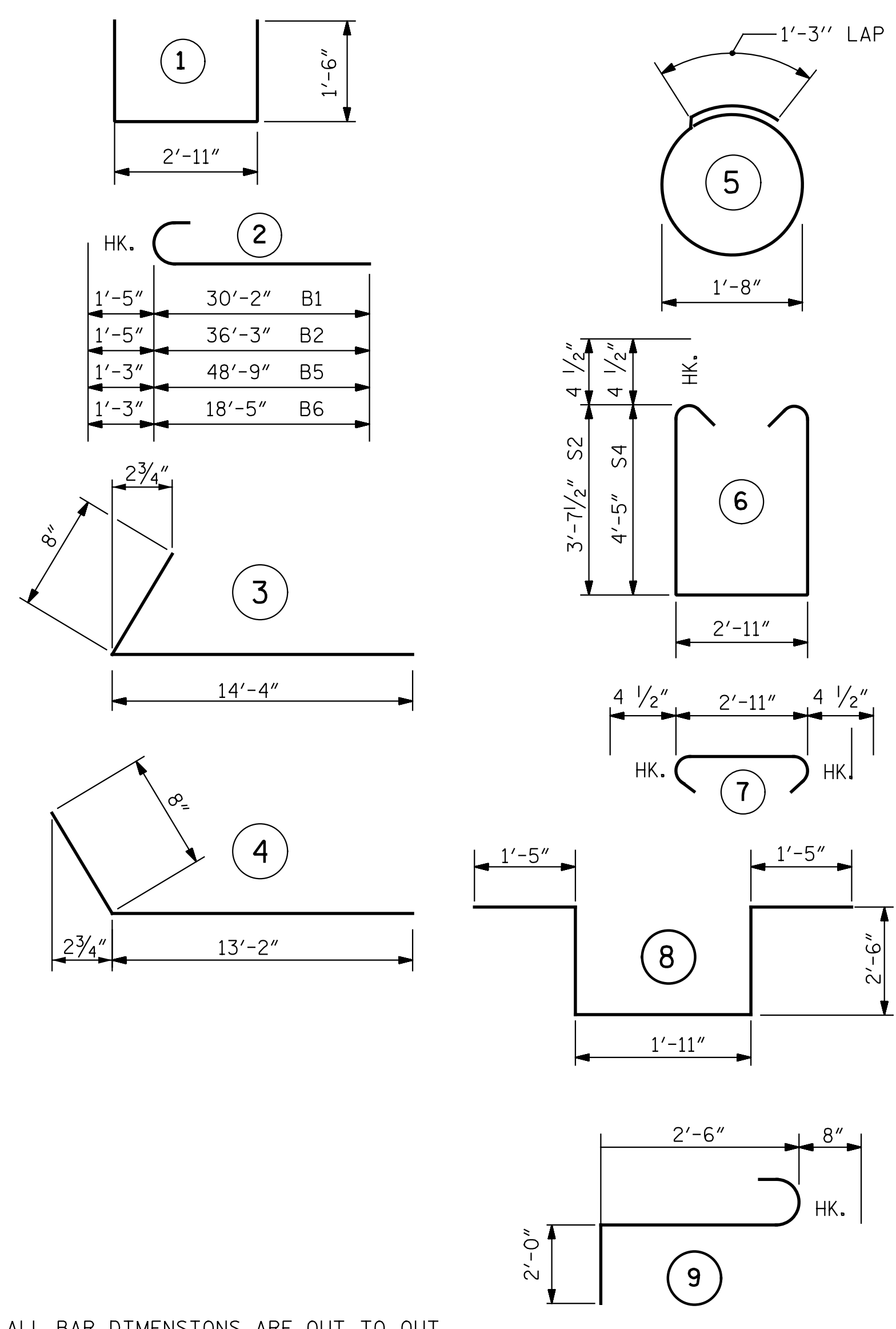
NOTE
THE CONCRETE IN THE SHADED AREA OF THE WING SHALL BE POURED AFTER THE BARRIER RAIL IS CAST IF SLIP FORMING IS USED.

BLOCKOUT IN WING WALL



ELEVATION

BAR TYPES



ALL BAR DIMENSIONS ARE OUT TO OUT.

BILL OF MATERIAL

END BENT 2					
BAR	NO.	SIZE	TYPE	LENGTH	WEIGHT
B1	4	10	2	31'-7"	544
B2	4	10	2	37'-8"	648
B3	42	4	STR.	21'-1"	592
B4	15	4	STR.	2'-11"	29
B5	5	9	2	50'-0"	850
B6	5	9	2	19'-8"	334
B7	5	4	STR.	12'-0"	40
B8	2	4	STR.	12'-2"	16
D1	80	4	STR.	7'-0"	374
H1	26	4	3	15'-0"	261
H2	44	6	4	13'-10"	914
K1	20	4	STR.	2'-10"	38
S1	40	4	5	6'-6"	174
S2	30	4	6	10'-11"	219
S3	45	4	7	3'-8"	110
S4	15	4	6	12'-6"	125
S5	3	6	8	9'-9"	44
S6	3	6	9	5'-2"	23
U1	8	4	1	5'-11"	32
V1	36	5	STR.	12'-3"	460
V2	32	5	STR.	11'-0"	367
REINFORCING STEEL, LB					6194
CLASS A CONCRETE, CY POUR 1					35.9
(POUR 2 INCLUDED IN SUPERSTRUCTURE)					
12" PRESTRESSED CONC. PILES NO.					11
LF					605
PILE REDRIVES, EA					5
NOTE: PILE HEADS HAVE BEEN DEDUCTED FROM CLASS A CONCRETE.					

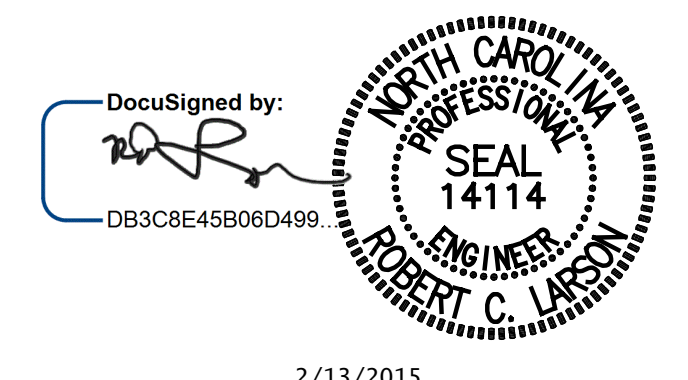
PROJECT NO. R-2514D
JONES COUNTY
 STATION: 320+39.56 -L-

SHEET 3 OF 3

STATE OF NORTH CAROLINA
 DEPARTMENT OF TRANSPORTATION
 RALEIGH

**SUBSTRUCTURE
 END BENT 2**

RIGHT LANE



2/13/2015

DocuSigned by: *[Signature]*
 DB3C8E45B06D499

DESIGN ENGINEER OF RECORD:	DATE: 2/13/2015
DRAWN BY: R. J. FLORY	DATE: 02/10/14
CHECKED BY: R. C. LARSON	DATE: 02/12/14

ENGINEERS • PLANNERS • ECOLOGISTS LICENSE NUMBER: C-0764

KCI Associates
 of North Carolina, P.A.

SUITE 220, LANDMARK CENTER # 400 SIX FORKS RD, RALEIGH, N.C. 27609-5200 (919) 783-9244

DWG. REF. NO. 20 OF 24

REVISIONS					
NO.	BY:	DATE:	NO.	BY:	DATE:
1			3		
2			4		

SHEET NO.	S02-20
TOTAL SHEETS	S02-24