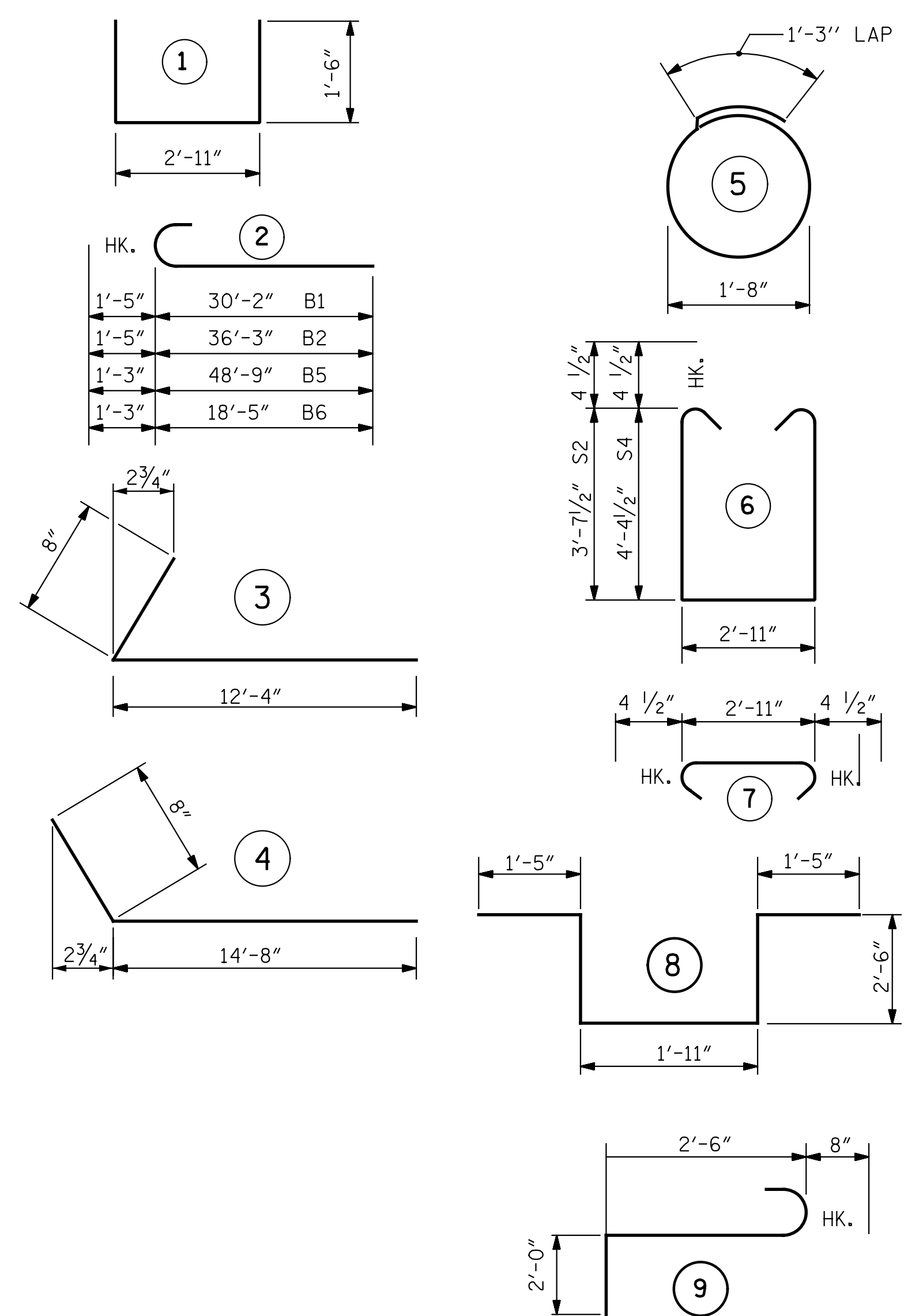


SECTION A-A

* THE TOP SURFACE OF THE CAP AND WINGS SHALL BE RAKED TO A DEPTH OF 1/4" EXCEPT THE BEARING AREAS AND CAP OUTSIDE OF SUPERSTRUCTURE.

BAR TYPES



ALL BAR DIMENSIONS ARE OUT TO OUT.

BILL OF MATERIAL

END BENT 1

| BAR | NO. | SIZE | TYPE | LENGTH | WEIGHT |
|-----|-----|------|------|---------|--------|
| B1 | 4 | 10 | 2 | 31'-7" | 544 |
| B2 | 4 | 10 | 2 | 37'-8" | 648 |
| B3 | 42 | 4 | STR. | 21'-1" | 592 |
| B4 | 15 | 4 | STR. | 2'-11" | 29 |
| B5 | 5 | 9 | 2 | 50'-0" | 850 |
| B6 | 5 | 9 | 2 | 19'-8" | 334 |
| B7 | 5 | 4 | STR. | 12'-0" | 40 |
| B8 | 2 | 4 | STR. | 12'-2" | 16 |
| D1 | 80 | 4 | STR. | 7'-0" | 374 |
| H1 | 26 | 4 | 4 | 15'-4" | 266 |
| H2 | 44 | 6 | 3 | 13'-0" | 859 |
| K1 | 20 | 4 | STR. | 2'-10" | 38 |
| S1 | 40 | 4 | 5 | 6'-6" | 174 |
| S2 | 30 | 4 | 6 | 10'-11" | 219 |
| S3 | 45 | 4 | 7 | 3'-8" | 110 |
| S4 | 15 | 4 | 6 | 12'-5" | 124 |
| S5 | 3 | 6 | 8 | 9'-9" | 44 |
| S6 | 3 | 6 | 9 | 5'-2" | 23 |
| U1 | 8 | 4 | 1 | 5'-11" | 32 |
| V1 | 36 | 5 | STR. | 12'-2" | 457 |
| V2 | 32 | 5 | STR. | 11'-0" | 367 |

REINFORCING STEEL, LB 6140

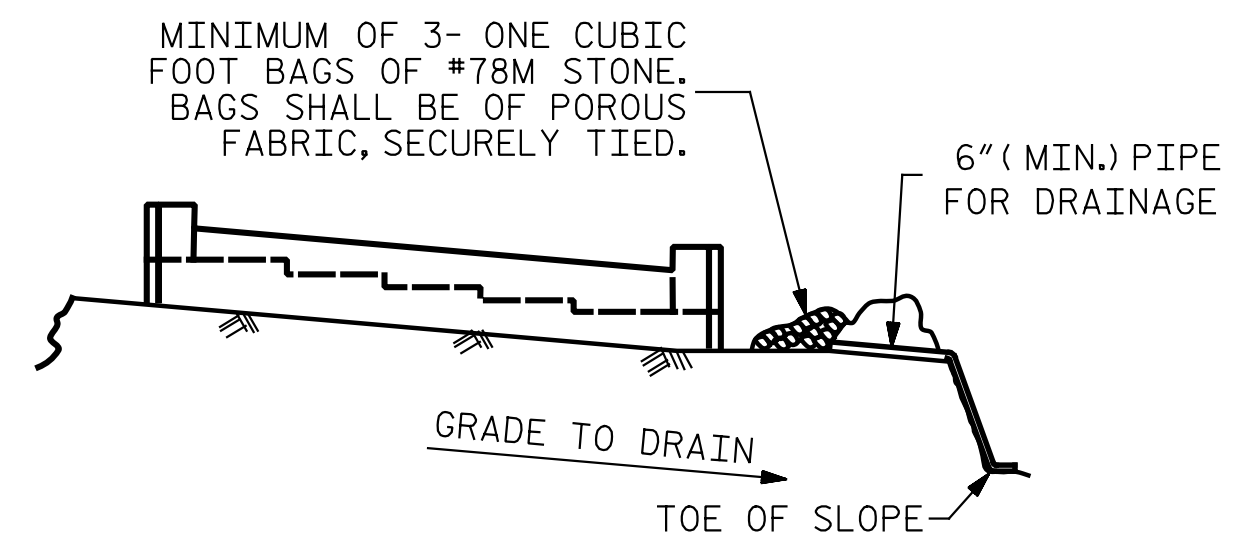
CLASS A CONCRETE, CY POUR 1 35.6

(POUR 2 INCLUDED IN SUPERSTRUCTURE)

HP 12X53 STEEL PILES NO. 11
LF 550

PILE REDRIVES, EA 5

NOTE: PILE HEADS HAVE BEEN DEDUCTED FROM CLASS A CONCRETE.



BAGGED STONE AND PIPE SHALL BE PLACED IMMEDIATELY AFTER COMPLETION OF END BENT EXCAVATION. PIPE MAY BE EITHER CONCRETE, CORRUGATED STEEL, CORRUGATED ALUMINUM ALLOY, OR CORRUGATED PLASTIC. PERFORATED PIPE WILL NOT BE ALLOWED.

BAGGED STONE SHALL REMAIN IN PLACE UNTIL THE ENGINEER DIRECTS THAT IT BE REMOVED. THE CONTRACTOR SHALL REMOVE AND DISPOSE OF SILT ACCUMULATIONS AT BAGGED STONE WHEN SO DIRECTED BY THE ENGINEER. BAGS SHALL BE REMOVED AND REPLACED WHENEVER THE ENGINEER DETERMINES THAT THEY HAVE DETERIORATED AND LOST THEIR EFFECTIVENESS.

NO SEPARATE PAYMENT WILL BE MADE FOR THIS WORK AND THE ENTIRE COST OF THIS WORK SHALL BE INCLUDED IN THE UNIT CONTRACT PRICE BID FOR THE SEVERAL PAY ITEMS.

TEMPORARY DRAINAGE AT END BENT

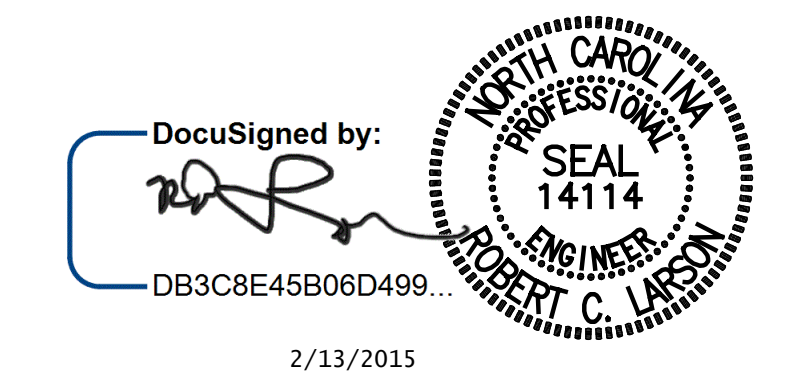
PROJECT NO. R-2514D
JONES COUNTY
STATION: 320+39.56 -L-

SHEET 3 OF 3

STATE OF NORTH CAROLINA
DEPARTMENT OF TRANSPORTATION
RALEIGH

**SUBSTRUCTURE
END BENT 1**

RIGHT LANE



DocuSigned by:
DB3C8E45B06D499...
2/13/2015

DocuSigned by:
DB3C8E45B06D499...

| | |
|----------------------------|-----------------|
| DESIGN ENGINEER OF RECORD: | DATE :2/13/2015 |
| DRAWN BY : R. J. FLORY | DATE :01/27/14 |
| CHECKED BY : R. C. LARSON | DATE :04/16/14 |

ENGINEERS • PLANNERS • ECOCLOGISTS LICENSE NUMBER: C-0764
KCI Associates
of North Carolina, P.A.
SUITE 220, LANDMARK CENTER # 4601 SIX FORKS RD, RALEIGH, N.C. 27609-5200 (919) 783-9244
DWG. REF. NO. 17 OF 24

| REVISIONS | | | | | | SHEET NO. S02-17 |
|-----------|-----|-------|-----|-----|-------|------------------------|
| NO. | BY: | DATE: | NO. | BY: | DATE: | |
| 1 | | | 3 | | | TOTAL SHEETS S02-24 |
| 2 | | | 4 | | | |

STR-#2