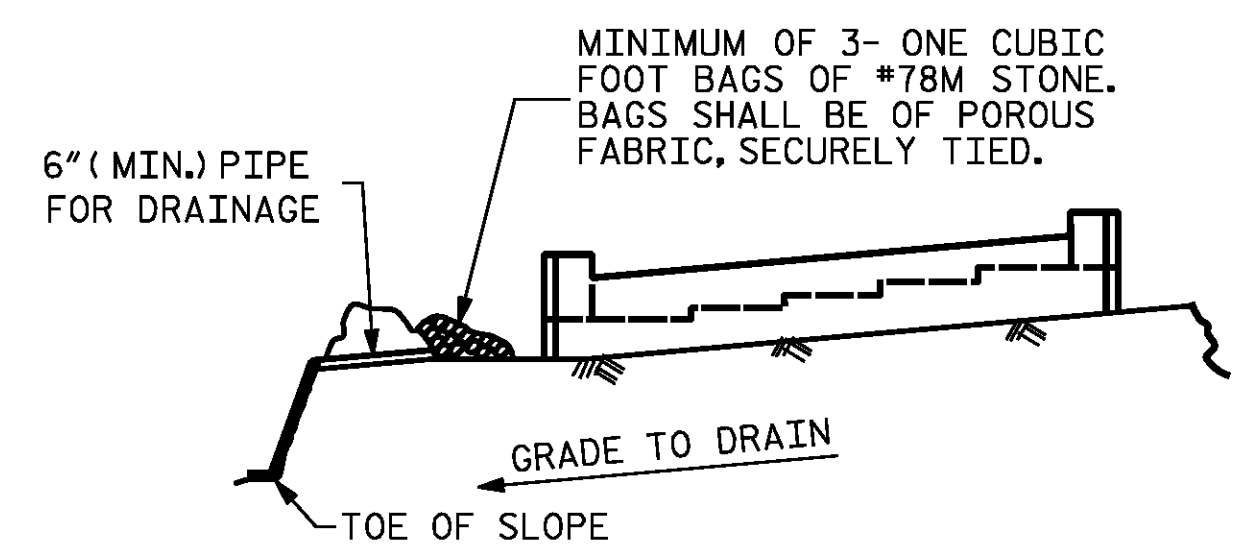


SECTION A-A

* THE TOP SURFACE OF THE CAP AND WINGS SHALL BE RAKED TO A DEPTH OF 1/4" EXCEPT THE BEARING AREAS AND CAP OUTSIDE OF SUPERSTRUCTURE.



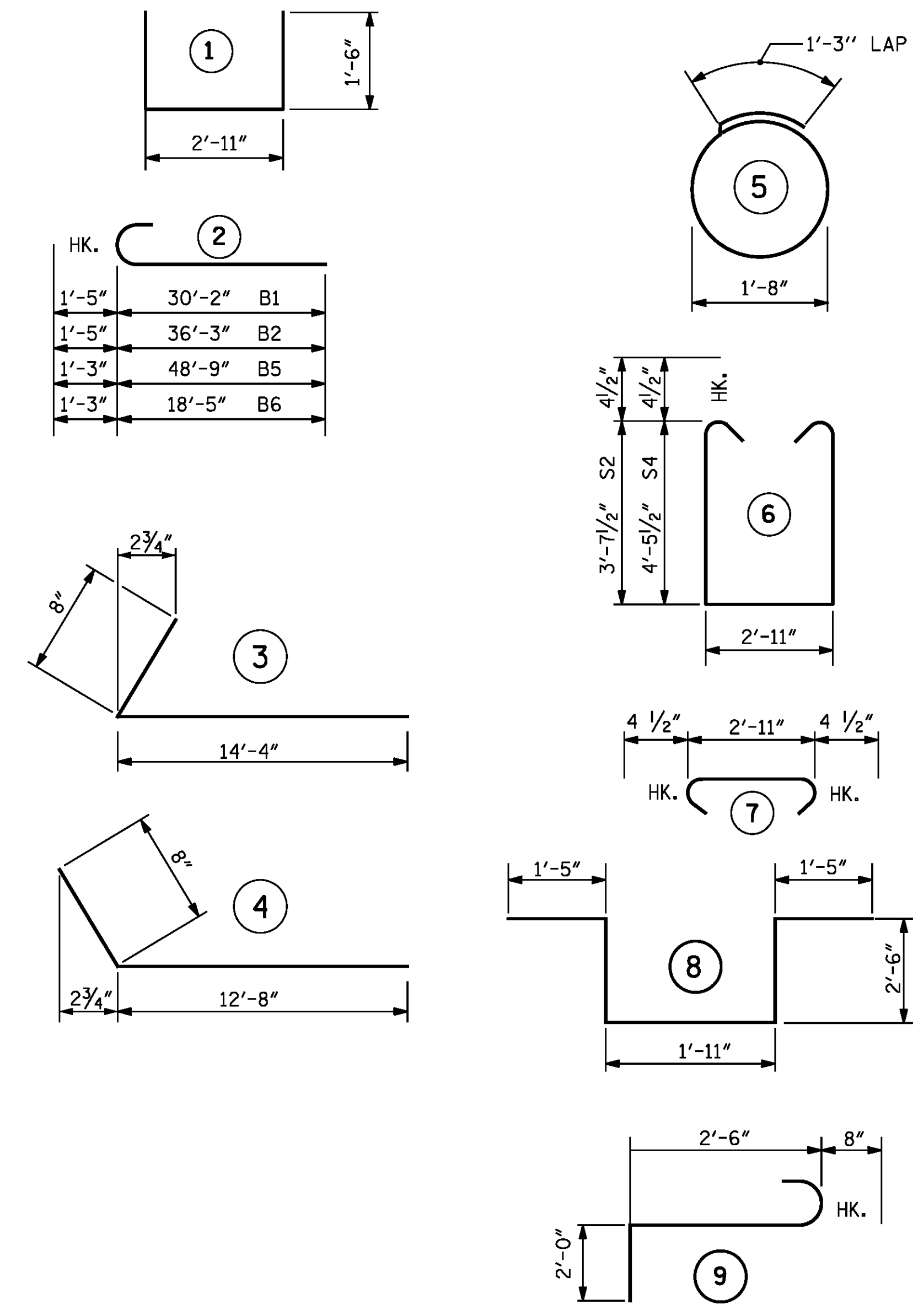
BAGGED STONE AND PIPE SHALL BE PLACED IMMEDIATELY AFTER COMPLETION OF END BENT EXCAVATION. PIPE MAY BE EITHER CONCRETE, CORRUGATED STEEL, CORRUGATED ALUMINUM ALLOY, OR CORRUGATED PLASTIC. PERFORATED PIPE WILL NOT BE ALLOWED.

BAGGED STONE SHALL REMAIN IN PLACE UNTIL THE ENGINEER DIRECTS THAT IT BE REMOVED. THE CONTRACTOR SHALL REMOVE AND DISPOSE OF SILT ACCUMULATIONS AT BAGGED STONE WHEN SO DIRECTED BY THE ENGINEER. BAGS SHALL BE REMOVED AND REPLACED WHENEVER THE ENGINEER DETERMINES THAT THEY HAVE DETERIORATED AND LOST THEIR EFFECTIVENESS.

NO SEPARATE PAYMENT WILL BE MADE FOR THIS WORK AND THE ENTIRE COST OF THIS WORK SHALL BE INCLUDED IN THE UNIT CONTRACT PRICE BID FOR THE SEVERAL PAY ITEMS.

TEMPORARY DRAINAGE AT END BENT

BAR TYPES



ALL BAR DIMENSIONS ARE OUT TO OUT.

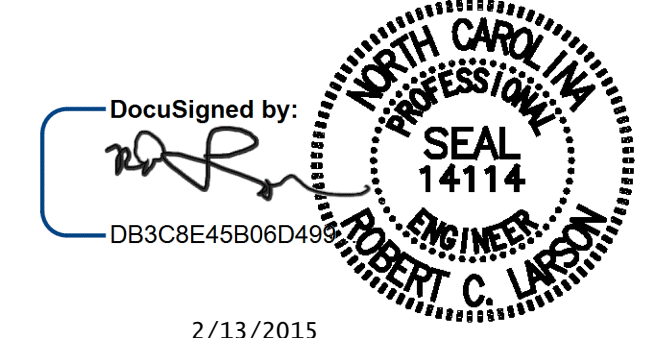
BILL OF MATERIAL

END BENT 1

BAR	NO.	SIZE	TYPE	LENGTH	WEIGHT
B1	4	10	2	31'-7"	544
B2	4	10	2	37'-8"	648
B3	42	4	STR.	21'-1"	592
B4	15	4	STR.	2'-11"	29
B5	5	9	2	50'-0"	850
B6	5	9	2	19'-8"	334
B7	5	4	STR.	12'-0"	40
B8	2	4	STR.	12'-2"	16
D1	80	4	STR.	7'-0"	374
H1	44	6	4	13'-4"	881
H2	26	4	3	15'-0"	261
K1	20	4	STR.	2'-10"	38
S1	40	4	5	6'-6"	174
S2	30	4	6	10'-11"	219
S3	45	4	7	3'-8"	110
S4	15	4	6	12'-7"	126
S5	3	6	8	9'-9"	44
S6	3	6	9	5'-2"	23
U1	8	4	1	5'-11"	32
V1	32	5	STR.	11'-0"	367
V2	36	5	STR.	12'-3"	460
REINFORCING STEEL, LB					6162
CLASS A CONCRETE, CY POUR 1					35.5
(POUR 2 INCLUDED IN SUPERSTRUCTURE)					
12" PRESTRESSED CONC. PILES					NO. 11 LF 605
PILE REDRIVES, EA					5
NOTE: PILE HEADS HAVE BEEN DEDUCTED FROM CLASS A CONCRETE					

DocuSigned by:
DB3C8E45B06D499...

DESIGN ENGINEER OF RECORD:	DATE : 2/13/2015
DRAWN BY : R. J. FLORY	DATE : 03/27/14
CHECKED BY : R. C. LARSON	DATE : 04/15/14



2/13/2015

ADDRESS: #1, AMERS @ ECOLOISTS LICENSE NUMBER: 0-0784
KCI Associates of North Carolina, P.A.
 SUITE 500, LANDMARK CENTER 1400 SIX FORKS RD, RALEIGH, N.C. 27609-0300 (919) 783-2044
 DWG. REF. NO. 17 OF 24

REVISIONS					
NO.	BY:	DATE:	NO.	BY:	DATE:
1			3		
2			4		

PROJECT NO. R-2514D
JONES COUNTY
 STATION: 320+39.56 -L-

SHEET 3 OF 3

STATE OF NORTH CAROLINA
 DEPARTMENT OF TRANSPORTATION
 RALEIGH

**SUBSTRUCTURE
 END BENT 1**

LEFT LANE

REVISIONS					
NO.	BY:	DATE:	NO.	BY:	DATE:
1			3		
2			4		

SHEET NO. SOI-17	TOTAL SHEETS SOI-24
------------------	---------------------

STR-#1