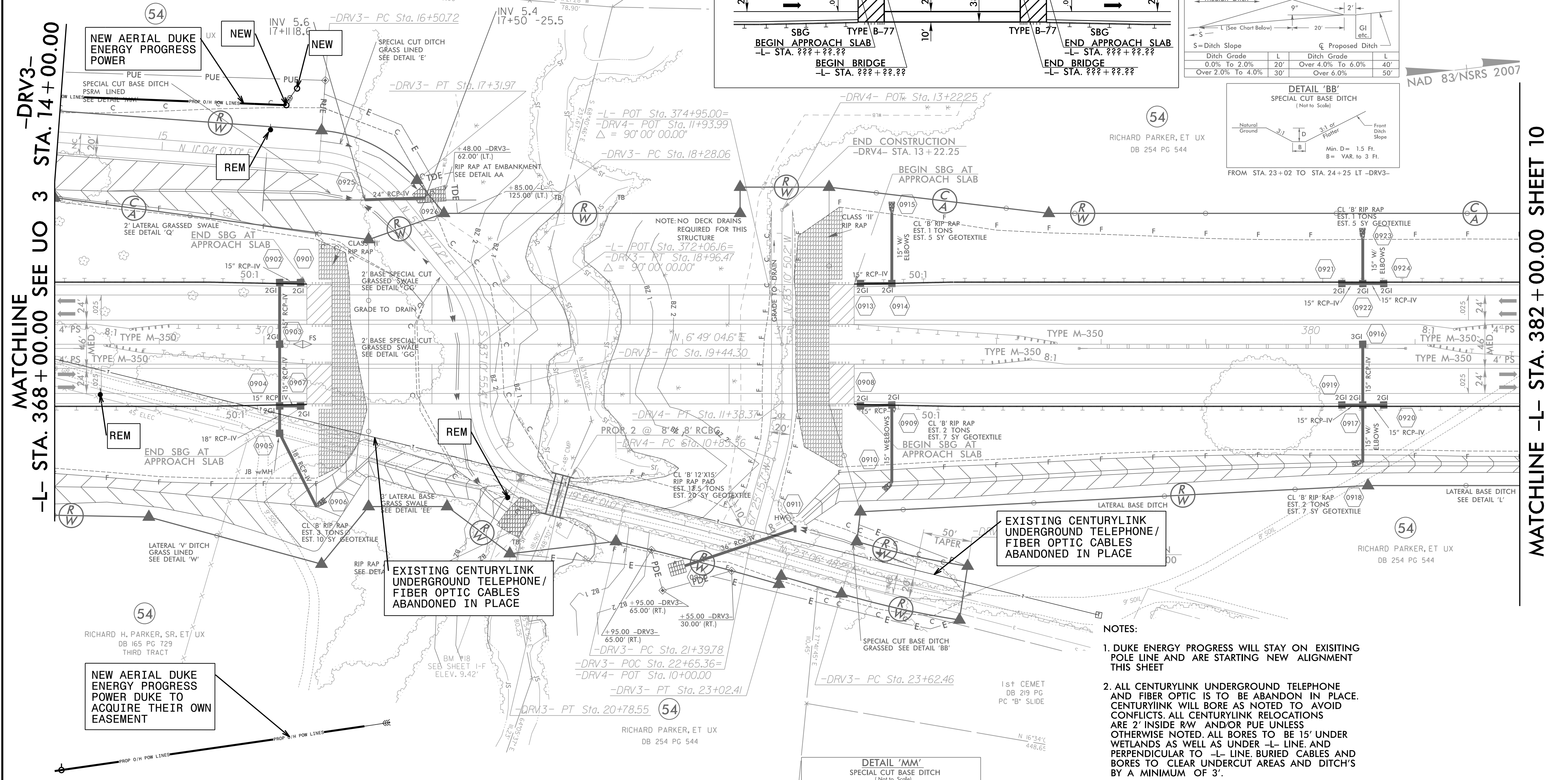
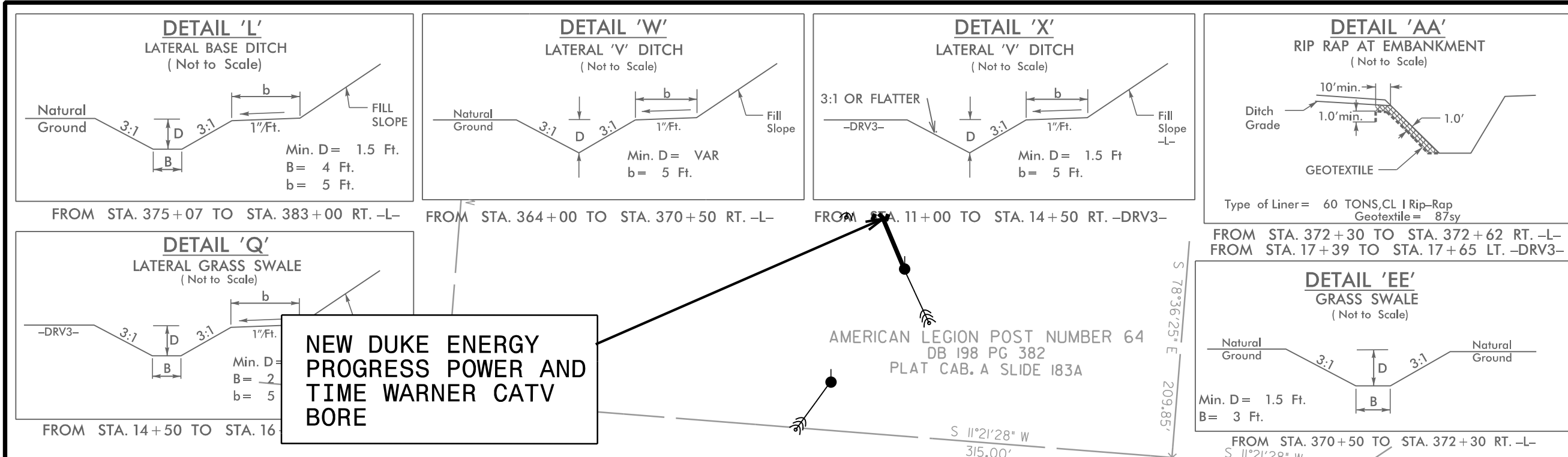
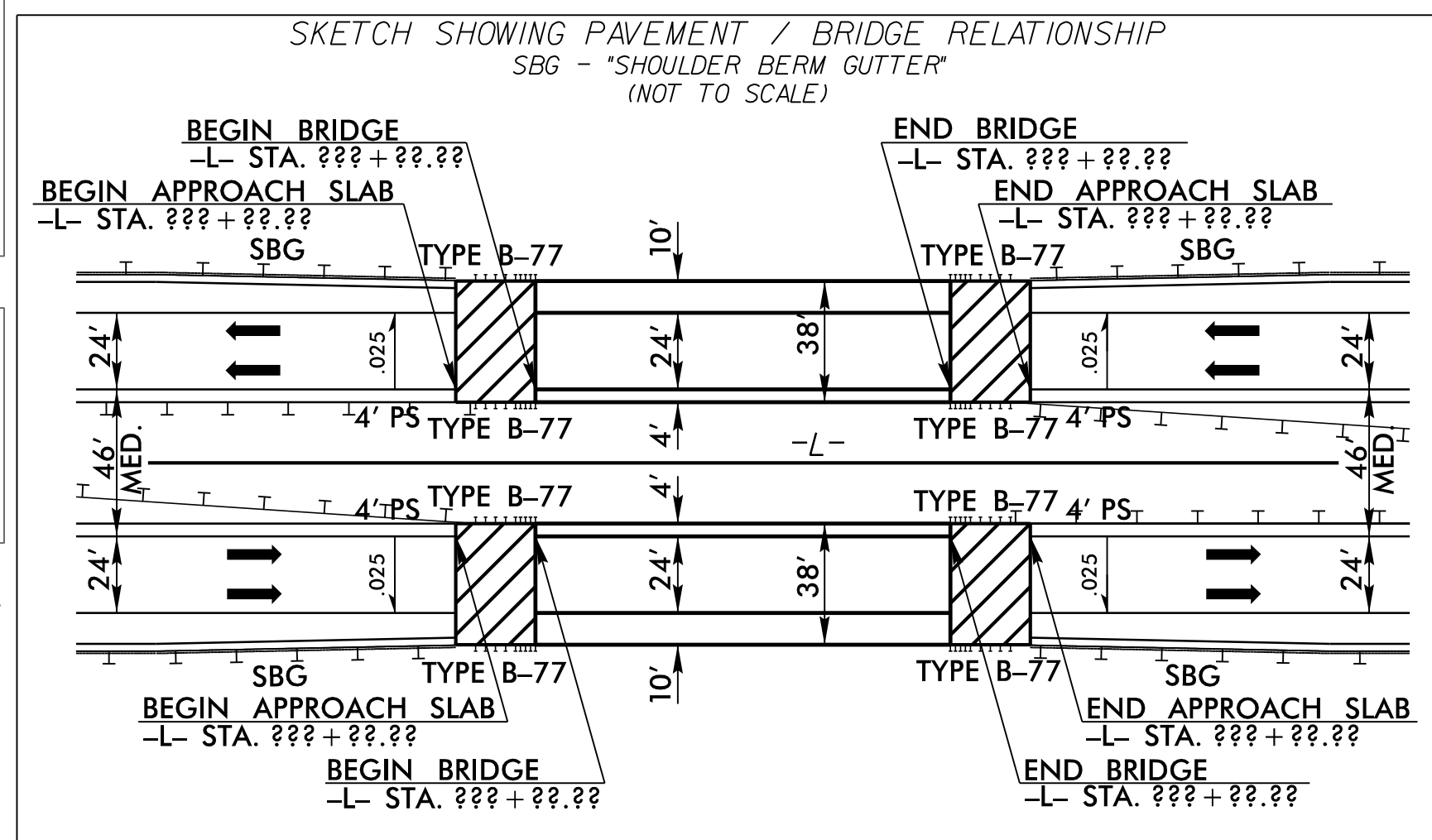
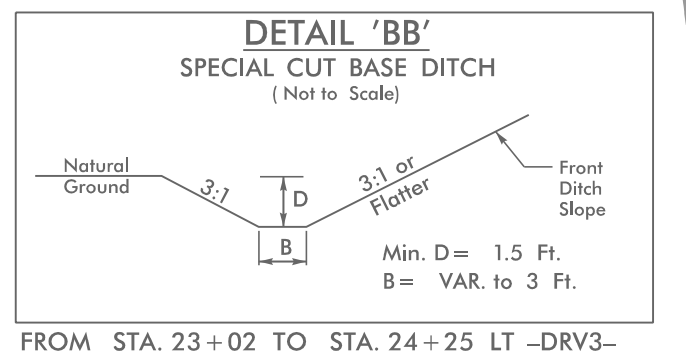
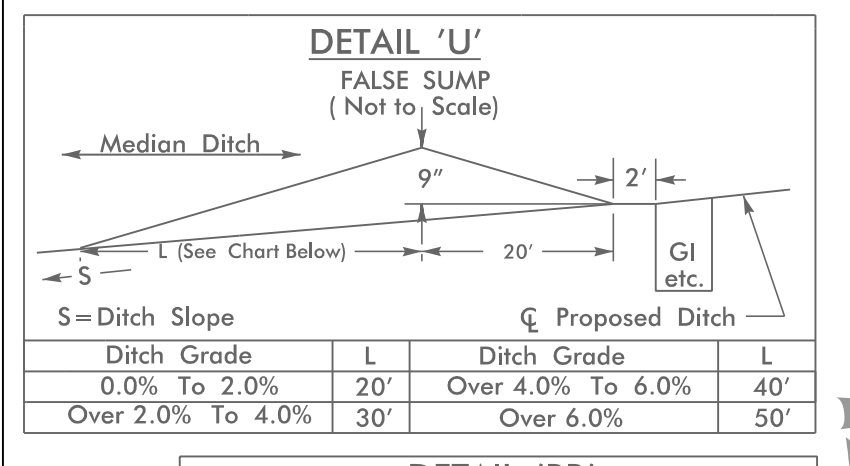


UTILITIES BY OTHERS

NOTE:
ALL PROPOSED UTILITY WORK SHOWN ON THIS SHEET WILL BE DONE BY OTHERS. NO PAYMENT WILL BE MADE TO THE CONTRACTOR FOR PROPOSED UTILITY WORK SHOWN ON THIS SHEET.



MATCHLINE -L- STA. 368+00.00 SEE UO 3 STA. 14+00.00

MATCHLINE -L- STA. 382+00.00 SHEET 10

-DRV3-			-DRV4-		
PI Sta 16+93.74	PI Sta 18+63.66	PI Sta 20+23.73	PI Sta 22+21.12	PI Sta 24+18.81	PI Sta 11+11.04
$\Delta = 46^{\circ}33'14.2"$ (RT)	$\Delta = 39^{\circ}11'47.4"$ (RT)	$\Delta = 76^{\circ}55'03.6"$ (LT)	$\Delta = 3^{\circ}12'47.2"$ (RT)	$\Delta = 7^{\circ}35'08.3"$ (LT)	$\Delta = 15^{\circ}45'34.5"$ (LT)
D = 57'17" 44.8"	D = 57'17" 44.8"	D = 57'17" 44.8"	D = 1'58" 32.6"	D = 6'44" 26.4"	D = 28'38" 52.4"
L = 81.25'	L = 68.41'	L = 134.25'	L = 162.63'	L = 112.54'	L = 55.01'
T = 43.02'	T = 35.60'	T = 79.43'	T = 81.34'	T = 56.35'	T = 27.68'
R = 100.00'	R = 100.00'	R = 100.00'	R = 2,900.00'	R = 850.00'	R = 200.00'

- NOTES:**
- DUKE ENERGY PROGRESS WILL STAY ON EXISTING POLE LINE AND ARE STARTING NEW ALIGNMENT THIS SHEET
 - ALL CENTURYLINK UNDERGROUND TELEPHONE AND FIBER OPTIC IS TO BE ABANDON IN PLACE. CENTURYLINK WILL BORE AS NOTED TO AVOID CONFLICTS. ALL CENTURYLINK RELOCATIONS ARE 2' INSIDE RW AND/OR PUE UNLESS OTHERWISE NOTED. ALL BORES TO BE 15' UNDER WETLANDS AS WELL AS UNDER -L- LINE AND PERPENDICULAR TO -L- LINE. BURIED CABLES AND BORES TO CLEAR UNDERCUT AREAS AND DITCH'S BY A MINIMUM OF 3'.

UTILITY OWNERS ON THIS SHEET

DUKE ENERGY PROGRESS - POWER
CENTURYLINK - TELEPHONE AND FIBER OPTIC
TIME WARNER - CATV

PLANS PREPARED BY :

RK&K
RUMMEL, KLEPPER & KAHL, LLP
900 RIDGEFIELD DRIVE SUITE 350
RALEIGH, NORTH CAROLINA 27609-3960
NC LICENSE NO. F-0112 • (919) 878-9560