

UTILITY OWNERS ON THIS SHEET

DUKE ENERGY PROGRESS - POWER
CENTURYLINK - TELEPHONE AND FIBER OPTIC
TIME WARNER - CATV
JONES COUNTY REGIONAL WATER SYSTEMS - WATER

NOTES:

1. DUKE ENERGY PROGRESS WILL BORE NEXT TO EXISTING GOSHEN ROAD TO AVOID CONFLICT WITH BRIDGE ABUTMENTS.
2. ALL CENTURYLINK UNDERGROUND TELEPHONE AND FIBER OPTIC IS TO BE ABANDON IN PLACE. CENTURYLINK WILL BORE AS NOTED TO AVOID CONFLICTS. ALL CENTURYLINK RELOCATIONS ARE 2' INSIDE R/W AND/OR PUE UNLESS OTHERWISE NOTED. ALL BORES TO BE 15' UNDER WETLANDS AS WELL AS UNDER -L- LINE AND PERPENDICULAR TO -L- LINE. BURIED CABLES AND BORES TO CLEAR UNDERCUT AREAS AND DITCH'S BY A MINIMUM OF 3'.
3. TIME WARNER CABLE ABANDONED IN PLACE UNDERGROUND FACILITIES AS NOTED. TIME WARNER WILL BE IN JOINT USE WITH DUKE ENERGY PROGRESS TIME WARNER TO COORDINATE WITH DUKE ENERGY PROGRESS FOR RELOCATION PROCEDURE. TIME WARNER TO SPLICE TO EXISTING SERVICE LINES OUTSIDE OF PROJECT CONSTRUCTION.
4. WATERLINE AND SANITARY SEWER DESIGNED BY McDAVID AND ASSOCIATES.

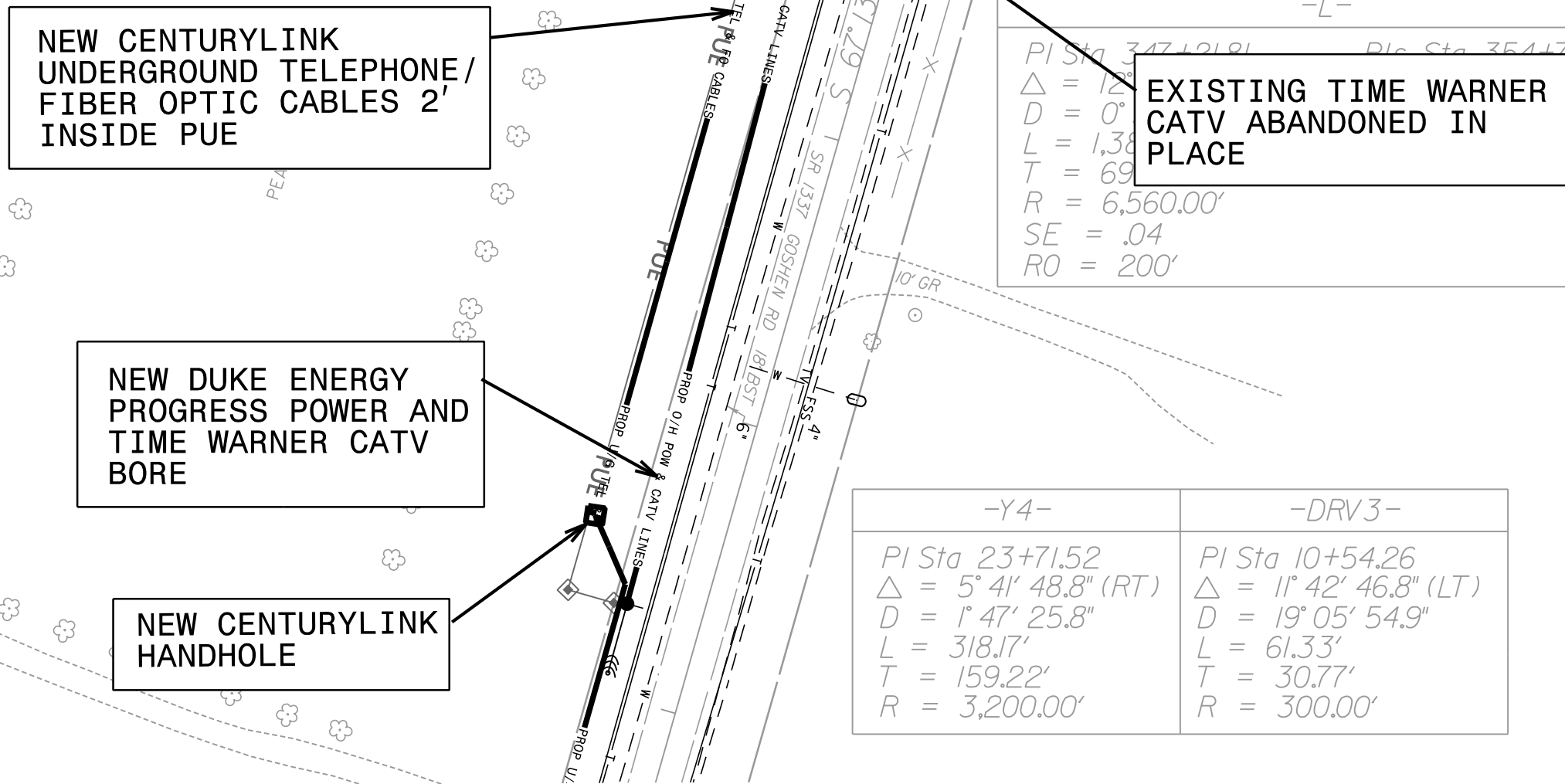
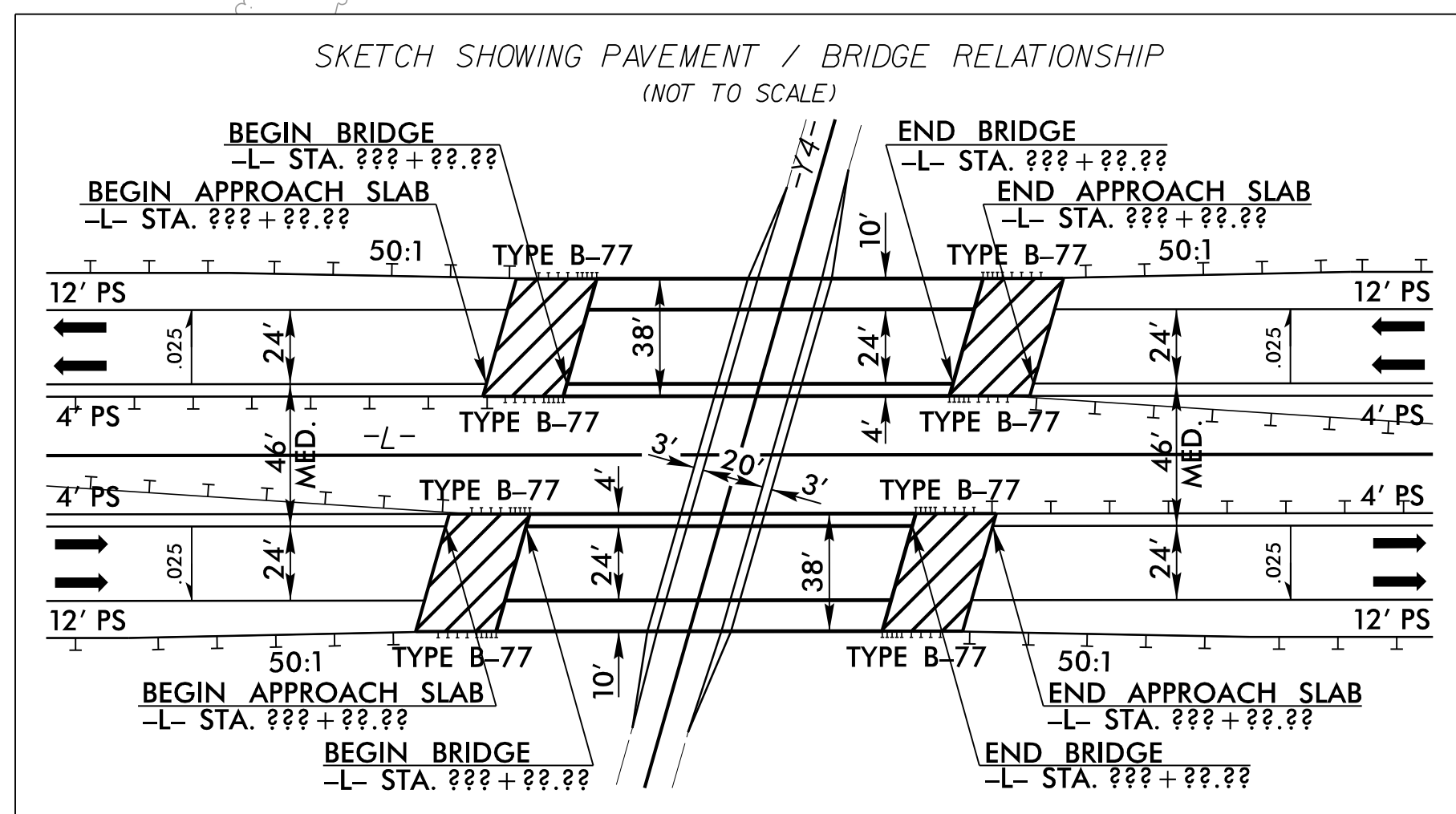
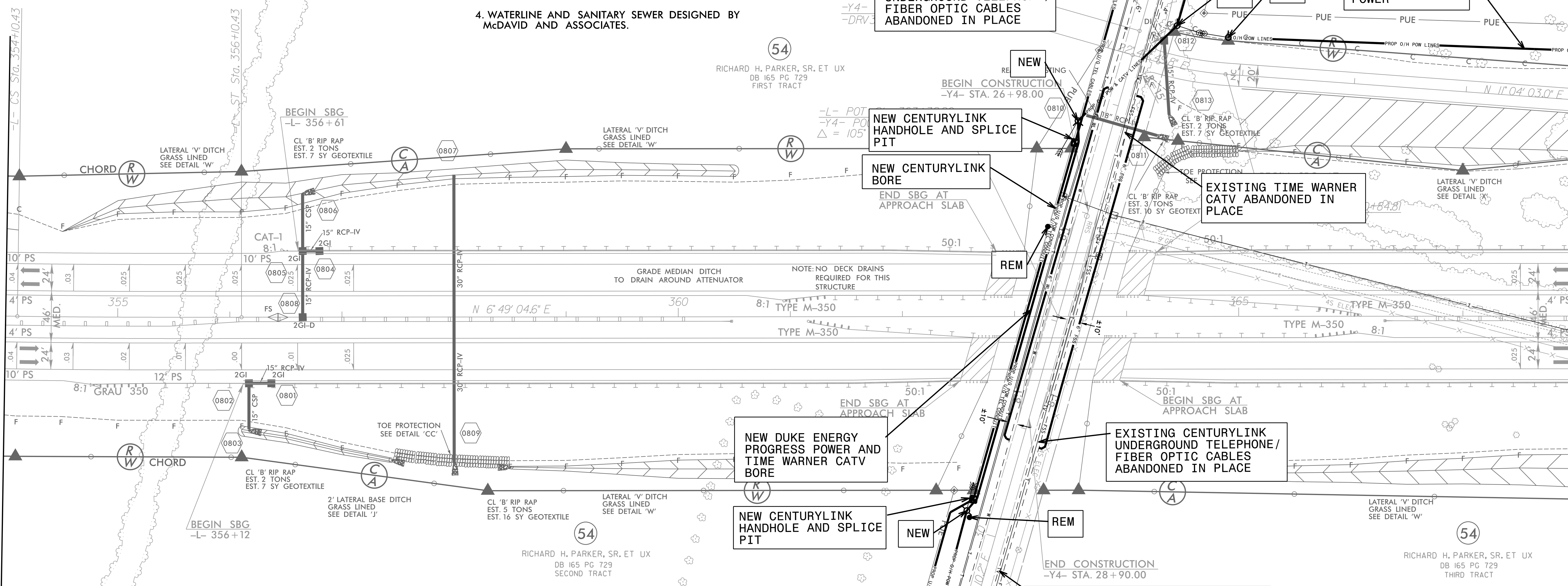
UTILITIES BY OTHERS

NOTE:
ALL PROPOSED UTILITY WORK SHOWN ON THIS SHEET WILL BE DONE BY OTHERS. NO PAYMENT WILL BE MADE TO THE CONTRACTOR FOR PROPOSED UTILITY WORK SHOWN ON THIS SHEET.

NAD 83/NSRS 2007

MATCHLINE -L- STA. 354 + 00.00 SHEET 7

MATCHLINE -DRV3-
-L- STA. 368 + 00.00 SEE UO 4 STA. 14 + 00.00



-Y4-	-DRV3-
PI Sta 23+71.52	PI Sta 10+54.26
Δ = 5' 41' 48.8" (RT)	Δ = 11' 42' 46.8" (LT)
D = 1' 47' 25.8"	D = 19' 05' 54.9"
L = 318.17'	L = 61.33'
T = 159.22'	T = 30.77'
R = 3,200.00'	R = 300.00'

NEW AERIAL DUKE ENERGY PROGRESS POWER DUKE TO ACQUIRE THEIR OWN EASEMENT