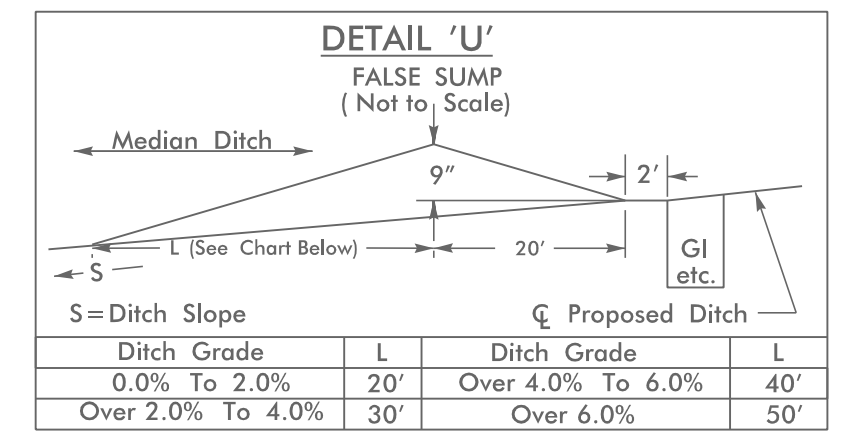


### UTILITIES BY OTHERS

**NOTE:**  
 ALL PROPOSED UTILITY WORK SHOWN ON THIS SHEET WILL BE DONE BY OTHERS. NO PAYMENT WILL BE MADE TO THE CONTRACTOR FOR PROPOSED UTILITY WORK SHOWN ON THIS SHEET.

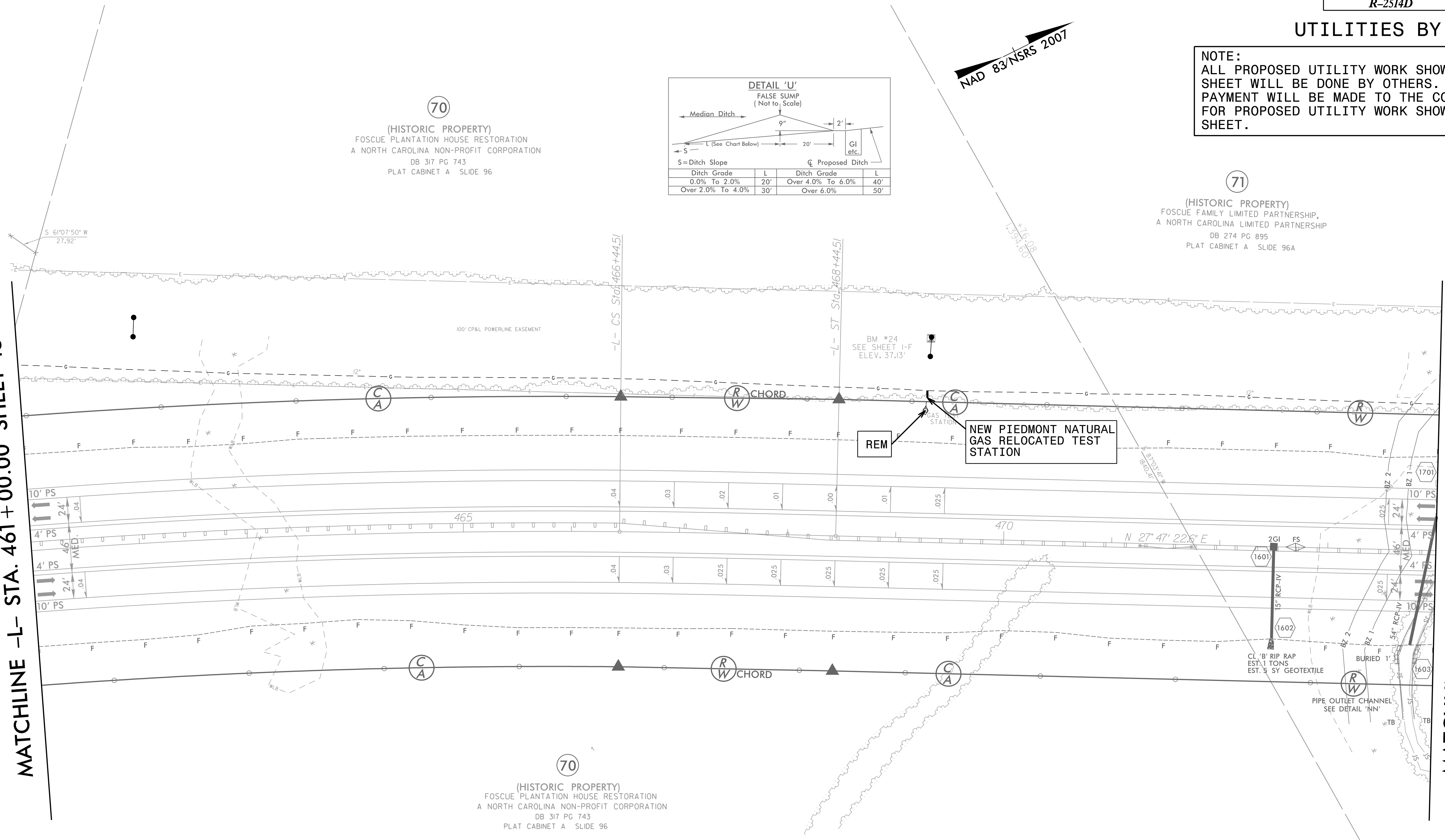
**70**  
 (HISTORIC PROPERTY)  
 FOSCUE PLANTATION HOUSE RESTORATION  
 A NORTH CAROLINA NON-PROFIT CORPORATION  
 DB 317 PG 743  
 PLAT CABINET A SLIDE 96



**71**  
 (HISTORIC PROPERTY)  
 FOSCUE FAMILY LIMITED PARTNERSHIP,  
 A NORTH CAROLINA LIMITED PARTNERSHIP  
 DB 274 PG 895  
 PLAT CABINET A SLIDE 96A

MATCHLINE -L- STA. 461 + 00.00 SHEET 15

MATCHLINE -L- STA. 474 + 00.00 SHEET 17



-L-

PI Sta 455+54.40	PIs Sta 467+11.8
$\Delta = 19' 13' 29.4" (RT)$	$\Theta_s = 0' 52' 24.3"$
$D = 0' 52' 24.3"$	$L_s = 200.00'$
$L = 2,201.12'$	$LT = 133.33'$
$T = 1,111.00'$	$ST = 66.67'$
$R = 6,560.00'$	
$SE = .04$	
$RO = 200'$	

**70**  
 (HISTORIC PROPERTY)  
 FOSCUE PLANTATION HOUSE RESTORATION  
 A NORTH CAROLINA NON-PROFIT CORPORATION  
 DB 317 PG 743  
 PLAT CABINET A SLIDE 96

#### UTILITY OWNERS ON THIS SHEET

DUKE ENERGY PROGRESS - TRANSMISSION (NO CONFLICT)  
 PIEDMONT NATURAL GAS - NATURAL GAS

#### PLANS PREPARED BY :

**RK&K**  
 RUMMEL, KLEPPER & KAHL, LLP  
 900 RIDGEFIELD DRIVE SUITE 350  
 RALEIGH, NORTH CAROLINA 27609-3960  
 NC LICENSE NO. F-0112 • (919) 878-9560