

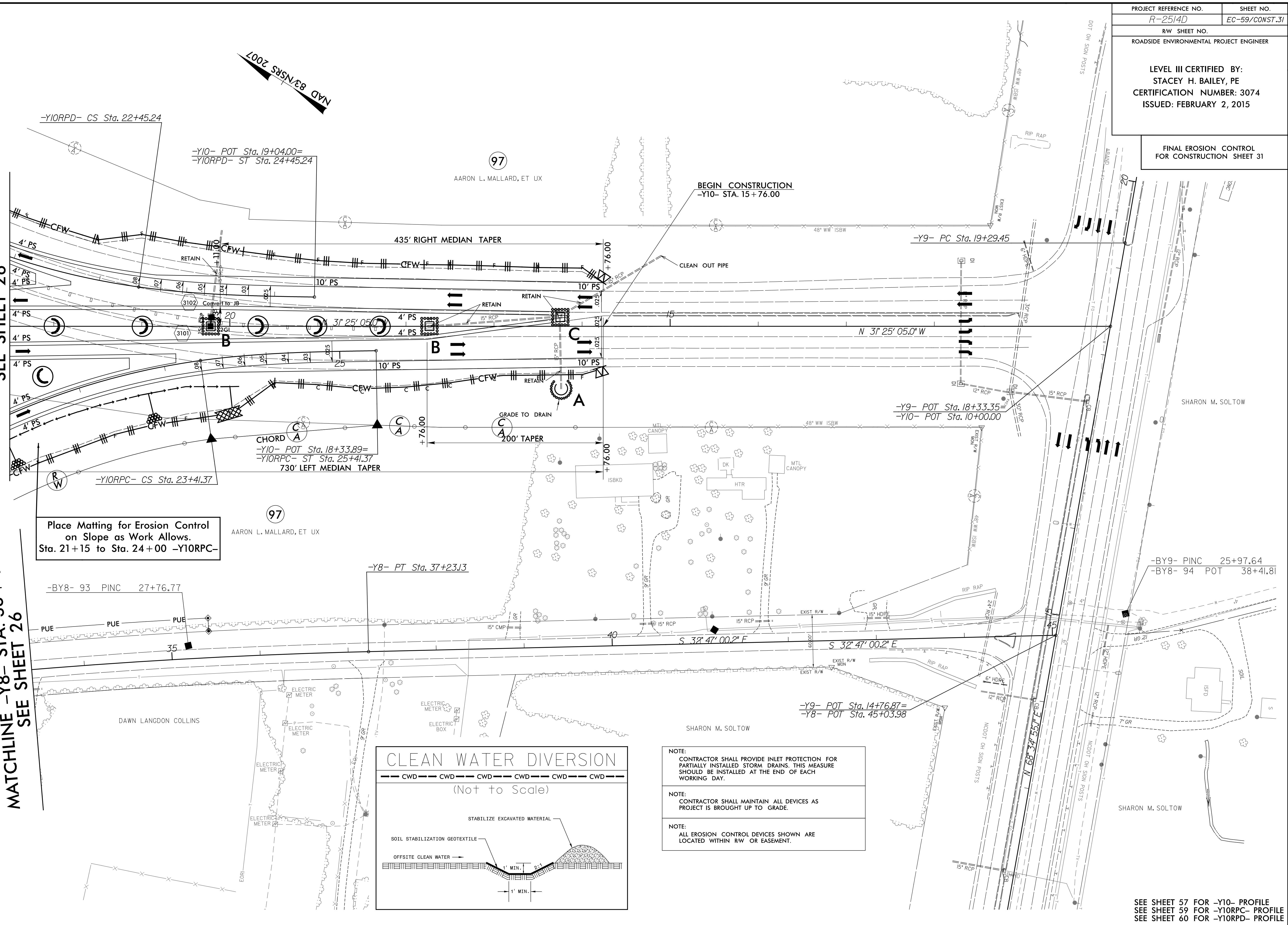
|   |                |
|---|----------------|
| PROJECT REFERENCE NO.   | SHEET NO.      |
| R-2514D   | EC-59/CONST.31 |
| RW SHEET NO.  |                |
| ROADSIDE ENVIRONMENTAL PROJECT ENGINEER   |                |
| LEVEL III CERTIFIED BY:<br>STACEY H. BAILEY, PE<br>CERTIFICATION NUMBER: 3074<br>ISSUED: FEBRUARY 2, 2015 |                |

FINAL EROSION CONTROL  
FOR CONSTRUCTION SHEET 31

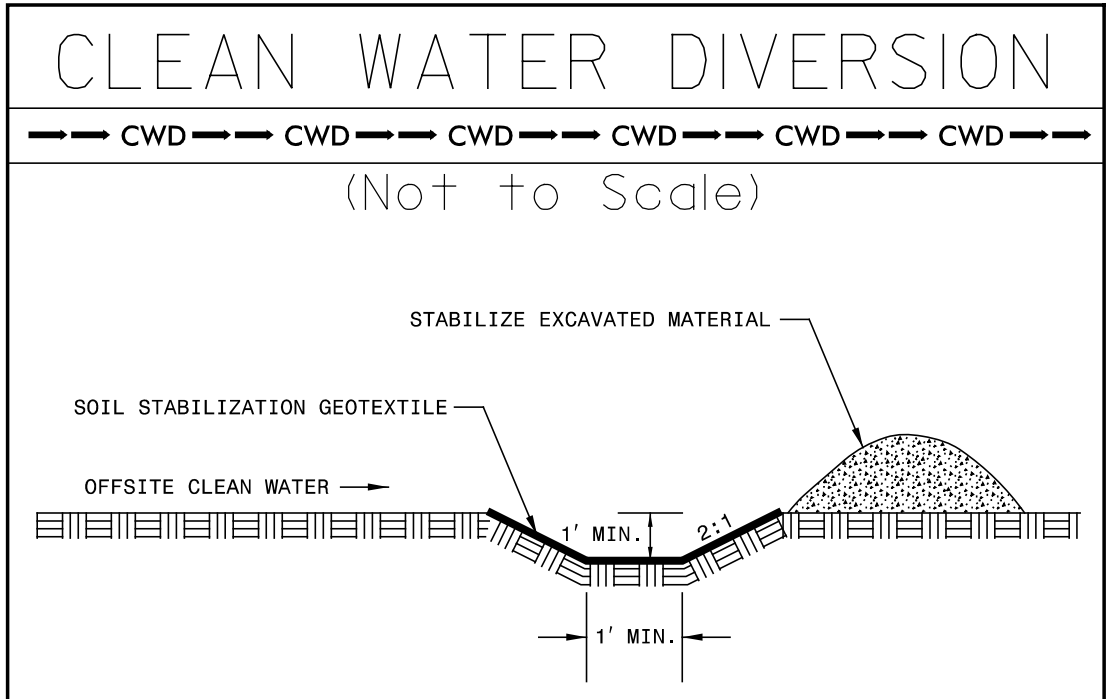
REVISIONS  
R/W REVISION 6-24-14 (DWG) - ADDED PUE FROM -Y8- STA.35+43.00 TO STA.32+36.00 TO STA.35+43.00 LT. ON PARCEL 97 (AARON L. MALLARD, ET UX).

MATCHLINE -Y10- STA. 22 + 50.00  
SEE SHEET 26

MATCHLINE -Y8- STA. 33 + 40.00  
SEE SHEET 26



Place Matting for Erosion Control  
on Slope as Work Allows.  
Sta. 21+15 to Sta. 24+00 -Y10RPC-



NOTE:  
CONTRACTOR SHALL PROVIDE INLET PROTECTION FOR PARTIALLY INSTALLED STORM DRAINS. THIS MEASURE SHOULD BE INSTALLED AT THE END OF EACH WORKING DAY.

NOTE:  
CONTRACTOR SHALL MAINTAIN ALL DEVICES AS PROJECT IS BROUGHT UP TO GRADE.

NOTE:  
ALL EROSION CONTROL DEVICES SHOWN ARE LOCATED WITHIN RW OR EASEMENT.

SEE SHEET 57 FOR -Y10- PROFILE  
SEE SHEET 59 FOR -Y10RPC- PROFILE  
SEE SHEET 60 FOR -Y10RPD- PROFILE