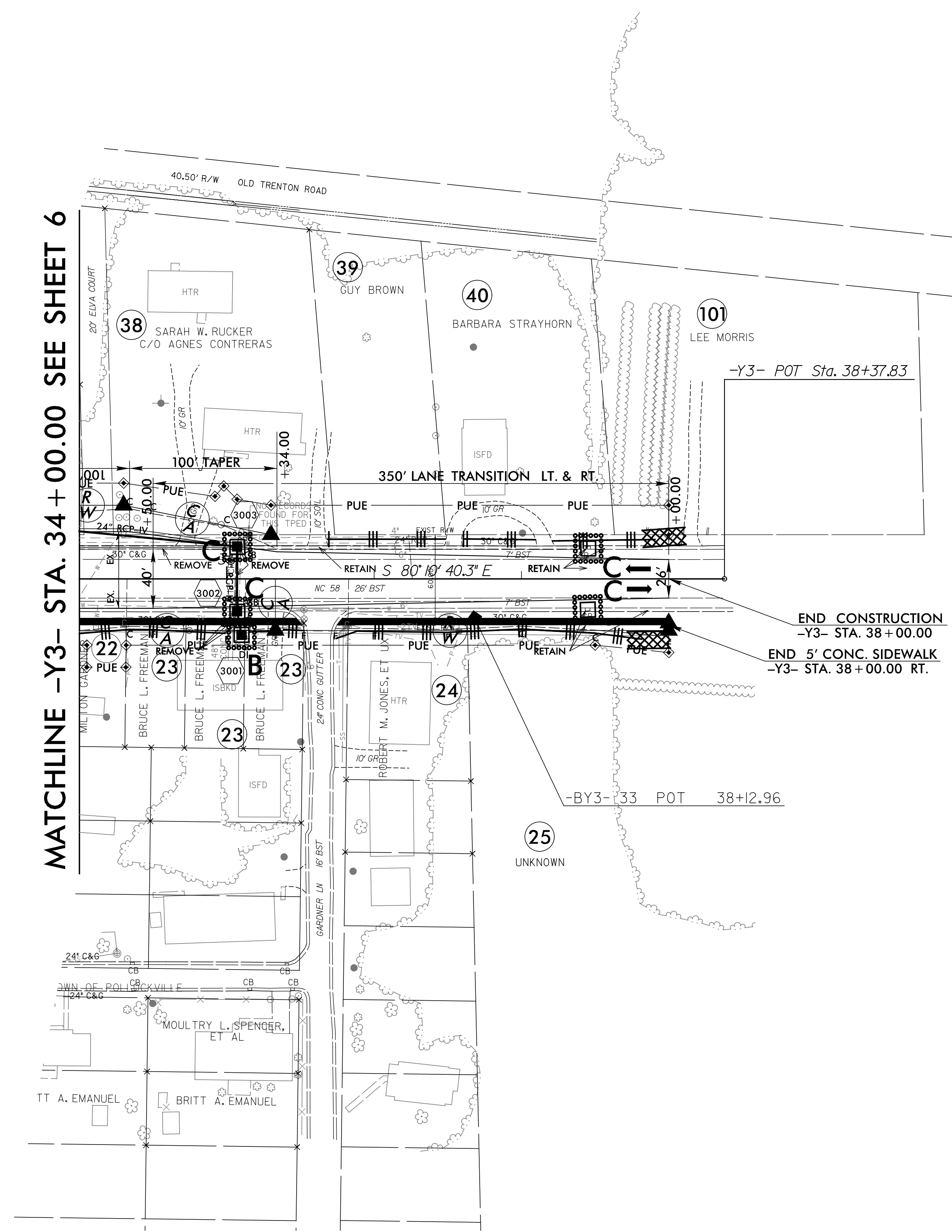


PROJECT REFERENCE NO.	SHEET NO.
R-2514D	EC-58/CONST.30
RW SHEET NO.	
ROADSIDE ENVIRONMENTAL PROJECT ENGINEER	
LEVEL III CERTIFIED BY: STACEY H. BAILEY, PE CERTIFICATION NUMBER: 3074 ISSUED: FEBRUARY 2, 2015	
FINAL EROSION CONTROL FOR CONSTRUCTION SHEET 30	

NAD 83/NSRS 2007

53  
ECIM PROPERTIES, LLC

MATCHLINE -Y3- STA. 34 + 00.00 SEE SHEET 6



NOTE:  
CONTRACTOR SHALL PROVIDE INLET PROTECTION FOR PARTIALLY INSTALLED STORM DRAINS. THIS MEASURE SHOULD BE INSTALLED AT THE END OF EACH WORKING DAY.

NOTE:  
CONTRACTOR SHALL MAINTAIN ALL DEVICES AS PROJECT IS BROUGHT UP TO GRADE.

NOTE:  
ALL EROSION CONTROL DEVICES SHOWN ARE LOCATED WITHIN RW OR EASEMENT.

REVISIONS  
R/W REVISION 6-24-14 (DWG) - REVISED THE PUE ON PARCEL 22 (MILTON GARDNER) AND PARCEL 38 (SARAH W. RUCKER C/O AGNES CONTRERAS).

8/17/99  
Control\CA00D\R2514D\_hydr.f.mol.psh.(30)58.dgn  
RAH  
ICA ENGINEERING, INC.

SEE SHEET 46 FOR -Y3- PROFILE