

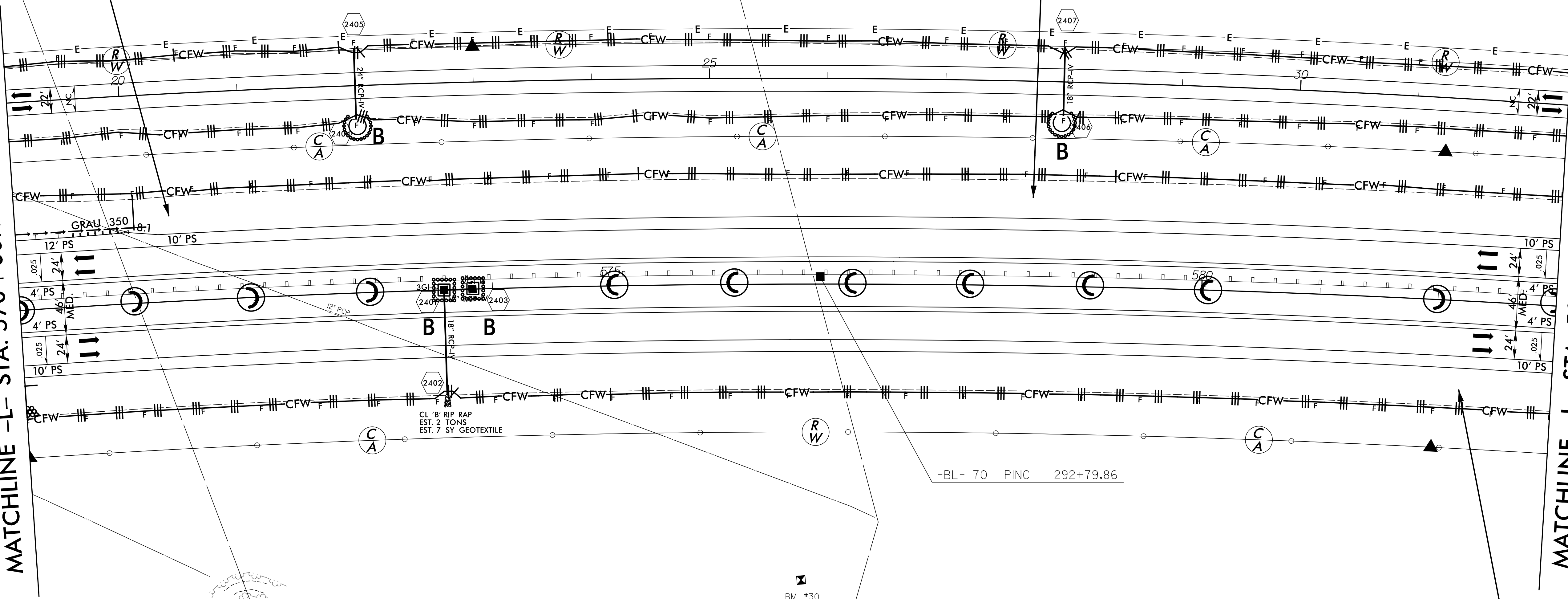
Place Matting for Erosion Control
on Slope as Work Allows.
Sta. 570+00 to Sta. 572+00 -L-

Place Matting for Erosion Control
on Slope as Work Allows.
Sta. 575+50 to Sta. 583+00 -L-

Place Matting for Erosion Control
on Slope as Work Allows.
Sta. 581+50 to Sta. 583+00 -L-

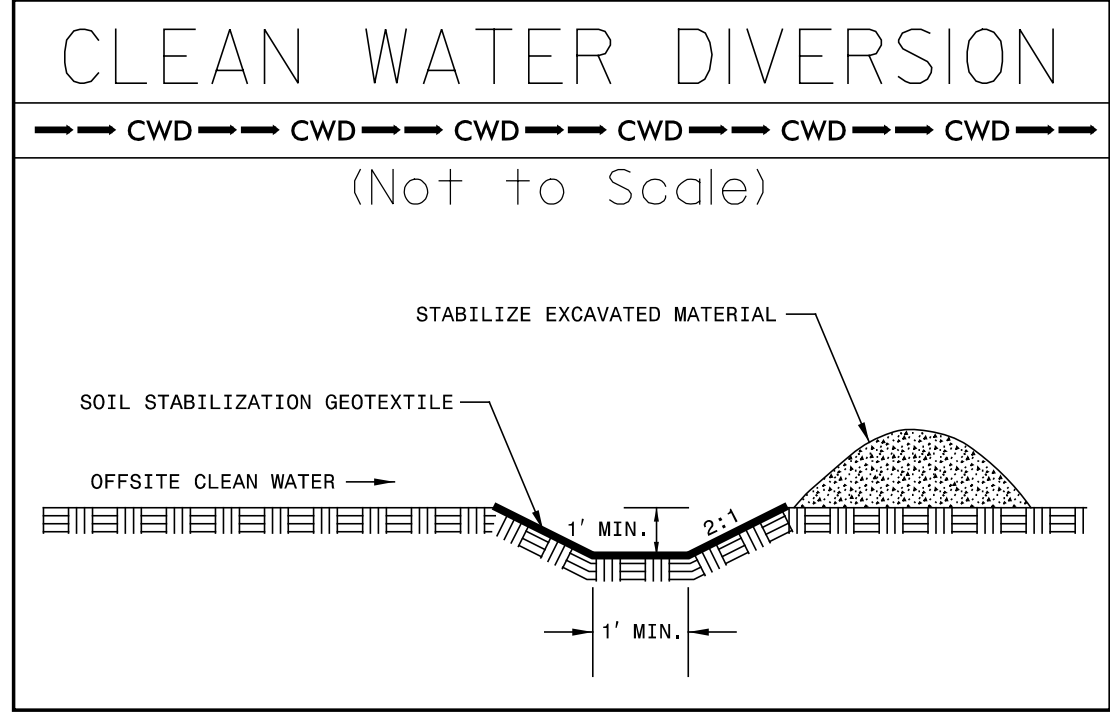
MATCHLINE -L- STA. 570+00.00 SEE SHEET 23

MATCHLINE -L- STA. 583+00.00 SEE SHEET 25



REVISIONS

8/17/99
R:\Projects\2514D\2514D.dgn
Control\CA00D\2514D_hydr\final\psh_124152.dgn
SYSTEMTIME: 8/17/99 11:55:58 AM
R:\Projects\2514D\2514D.dgn
ICA ENGINEERING, INC.



DETAIL 'U'

FALSE SUMP (Not to Scale)

Ditch Grade	L	Ditch Grade	L
0.0% To 2.0%	20'	Over 4.0% To 6.0%	40'
Over 2.0% To 4.0%	30'	Over 6.0%	50'

NOTE:
CONTRACTOR SHALL PROVIDE INLET PROTECTION FOR PARTIALLY INSTALLED STORM DRAINS. THIS MEASURE SHOULD BE INSTALLED AT THE END OF EACH WORKING DAY.

NOTE:
CONTRACTOR SHALL MAINTAIN ALL DEVICES AS PROJECT IS BROUGHT UP TO GRADE.

NOTE:
ALL EROSION CONTROL DEVICES SHOWN ARE LOCATED WITHIN RW OR EASEMENT.