

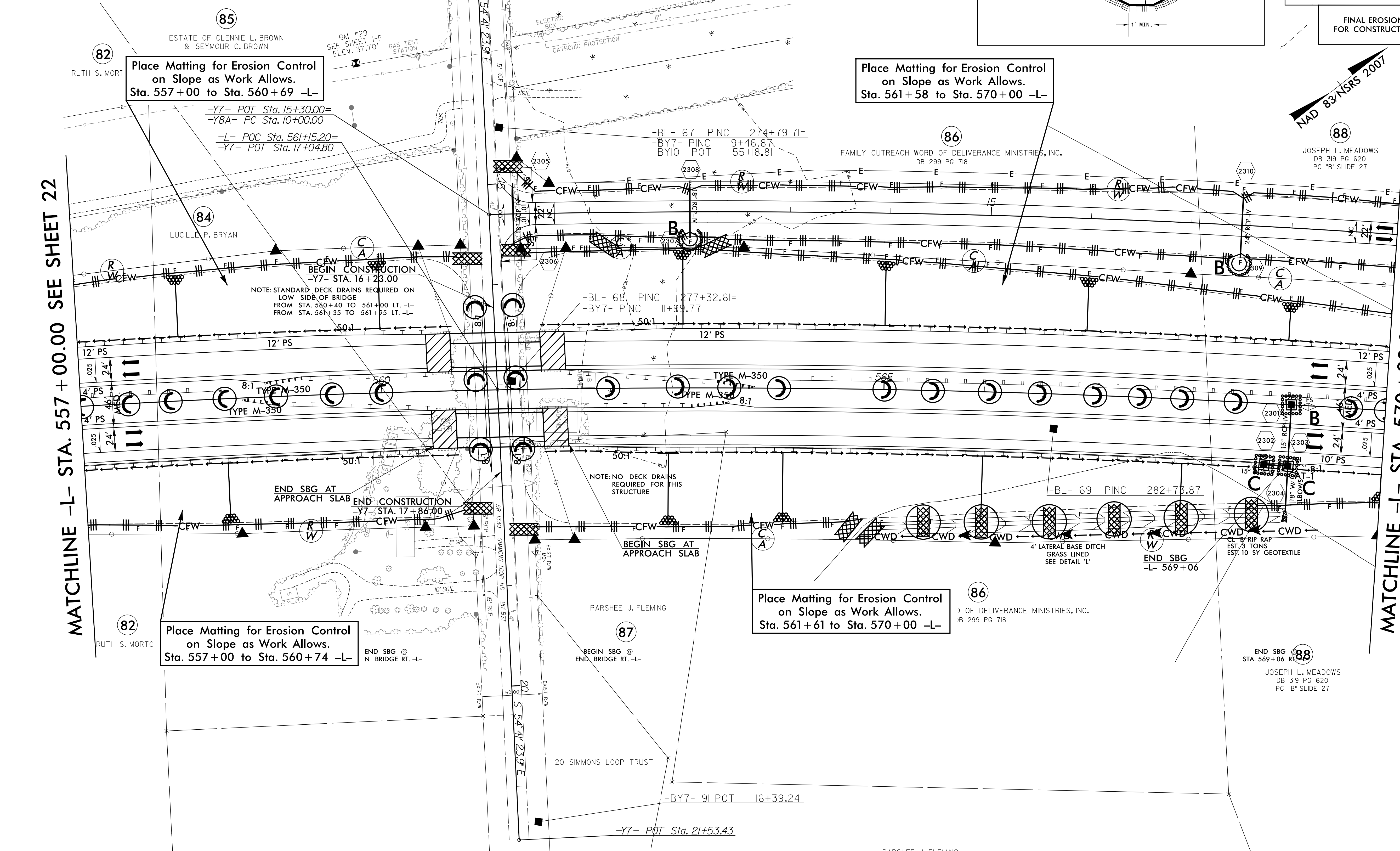
NOTE: CONTRACTOR SHALL PROVIDE INLET PROTECTION FOR PARTIALLY INSTALLED STORM DRAINS. THIS MEASURE SHOULD BE INSTALLED AT THE END OF EACH WORKING DAY.

NOTE: CONTRACTOR SHALL MAINTAIN ALL DEVICES AS PROJECT IS BROUGHT UP TO GRADE.

NOTE: ALL EROSION CONTROL DEVICES SHOWN ARE LOCATED WITHIN RW OR EASEMENT.

MATCHLINE -L- STA. 557 + 00.00 SEE SHEET 22

MATCHLINE -L- STA. 570 + 00.00 SEE SHEET 24



Place Matting for Erosion Control on Slope as Work Allows. Sta. 557+00 to Sta. 560+69 -L-

Place Matting for Erosion Control on Slope as Work Allows. Sta. 561+58 to Sta. 570+00 -L-

Place Matting for Erosion Control on Slope as Work Allows. Sta. 557+00 to Sta. 560+74 -L-

Place Matting for Erosion Control on Slope as Work Allows. Sta. 561+61 to Sta. 570+00 -L-

8/17/99
 REVISIONS
 8/17/99
 CONTROL\CA00D\R2514D_hydr.fma1.psh.(23)51.dgn
 SYSTEMS
 2005
 8/17/99
 CONTROL\CA00D\R2514D_hydr.fma1.psh.(23)51.dgn
 SYSTEMS
 2005

SEE SHEET 42 FOR -L- PROFILE
 SEE SHEET 54 FOR -Y7- PROFILE
 SEE SHEET 55 FOR -Y8A- PROFILE
 SEE SHEETS S-1 THRU S-2 FOR STRUCTURE PLANS

SBG - "SHOULDER BERM GUTTER"