

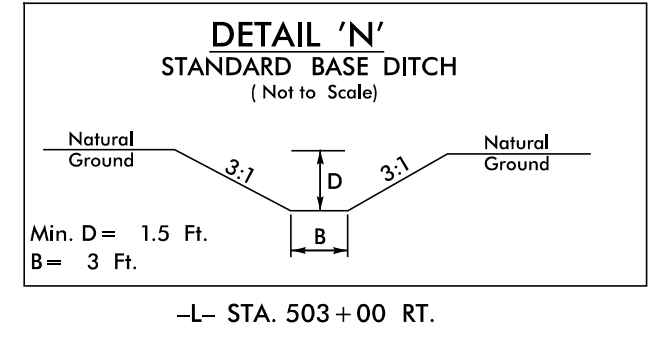
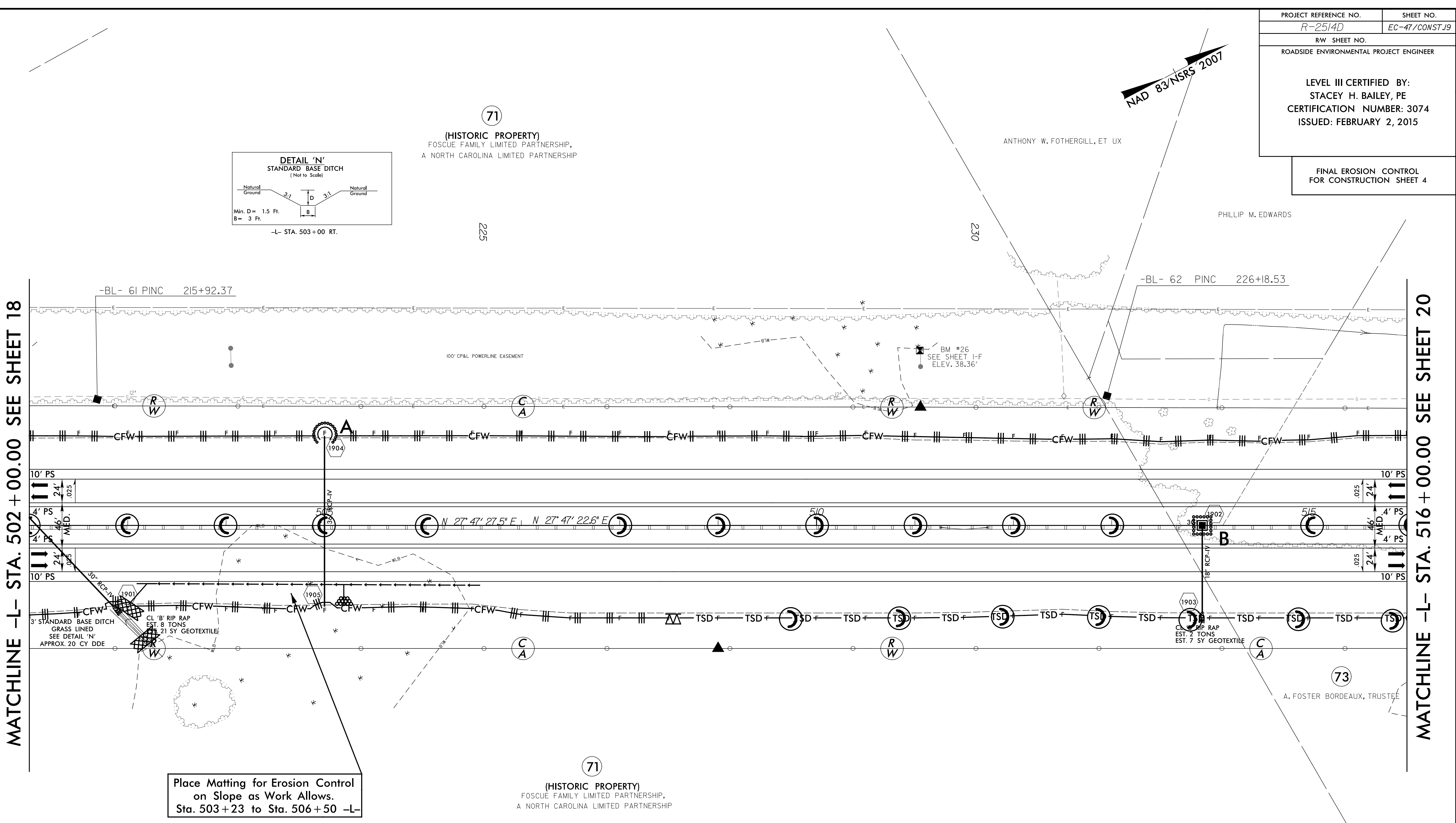
PROJECT REFERENCE NO.	SHEET NO.
R-2514D	EC-47/CONST.19
RW SHEET NO.	
ROADSIDE ENVIRONMENTAL PROJECT ENGINEER	
LEVEL III CERTIFIED BY: STACEY H. BAILEY, PE CERTIFICATION NUMBER: 3074 ISSUED: FEBRUARY 2, 2015	

FINAL EROSION CONTROL
FOR CONSTRUCTION SHEET 4

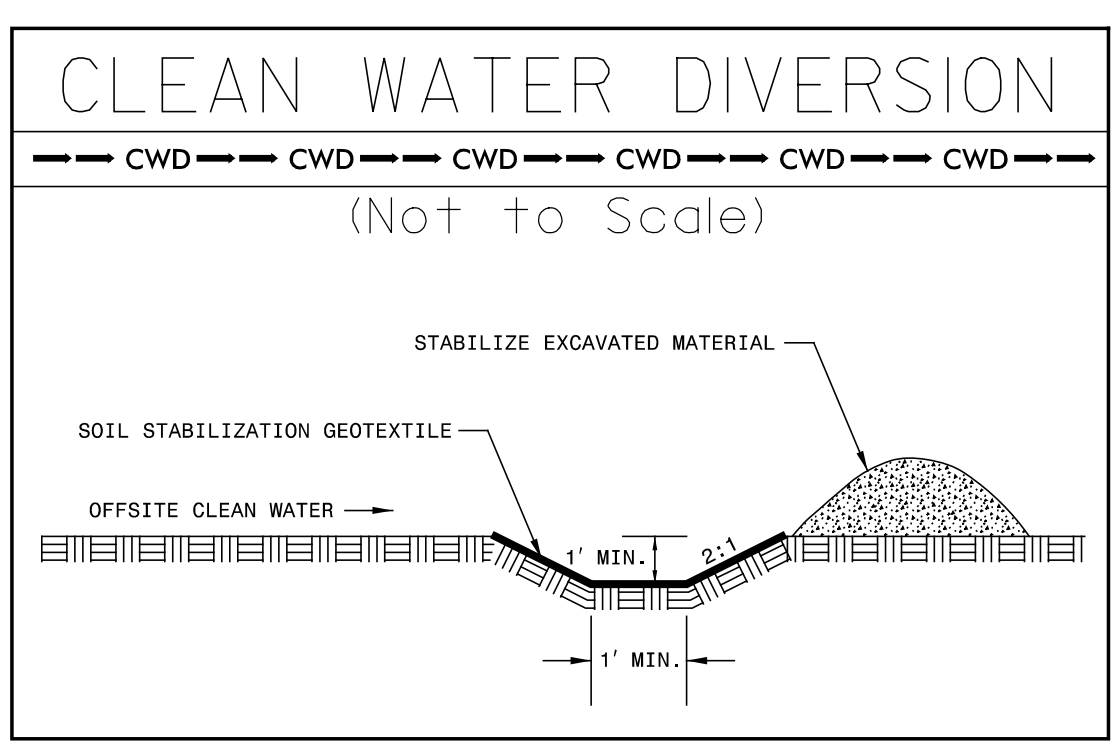
8/17/99

MATCHLINE -L- STA. 502 + 00.00 SEE SHEET 18

MATCHLINE -L- STA. 516 + 00.00 SEE SHEET 20



Place Matting for Erosion Control
on Slope as Work Allows.
Sta. 503+23 to Sta. 506+50 -L-



NOTE:
CONTRACTOR SHALL PROVIDE INLET PROTECTION FOR PARTIALLY INSTALLED STORM DRAINS. THIS MEASURE SHOULD BE INSTALLED AT THE END OF EACH WORKING DAY.

NOTE:
CONTRACTOR SHALL MAINTAIN ALL DEVICES AS PROJECT IS BROUGHT UP TO GRADE.

NOTE:
ALL EROSION CONTROL DEVICES SHOWN ARE LOCATED WITHIN RW OR EASEMENT.

SEE SHEET 40 FOR -L- PROFILE

REVISIONS

8/17/99
Control\CA00D\R2514D_hydr\final.psh.(19)47.dgn
SYSTEMS
R2514D
CA ENGINEERING, INC.