

NOTE:
CONTRACTOR SHALL PROVIDE INLET PROTECTION FOR PARTIALLY INSTALLED STORM DRAINS. THIS MEASURE SHOULD BE INSTALLED AT THE END OF EACH WORKING DAY.

NOTE:
CONTRACTOR SHALL MAINTAIN ALL DEVICES AS PROJECT IS BROUGHT UP TO GRADE.

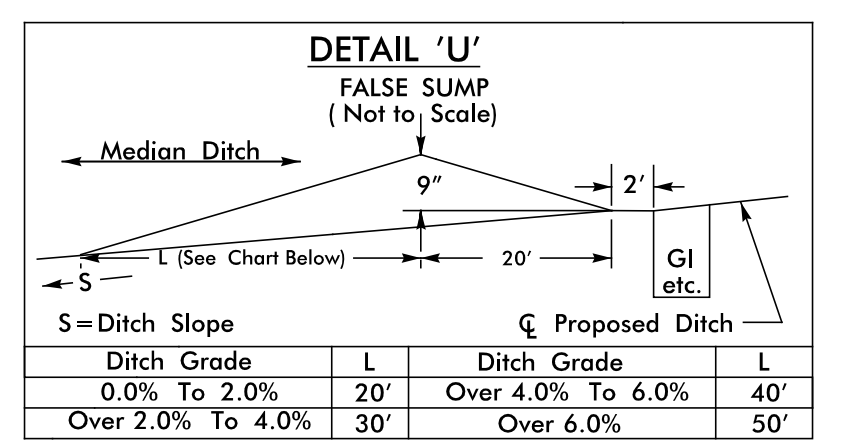
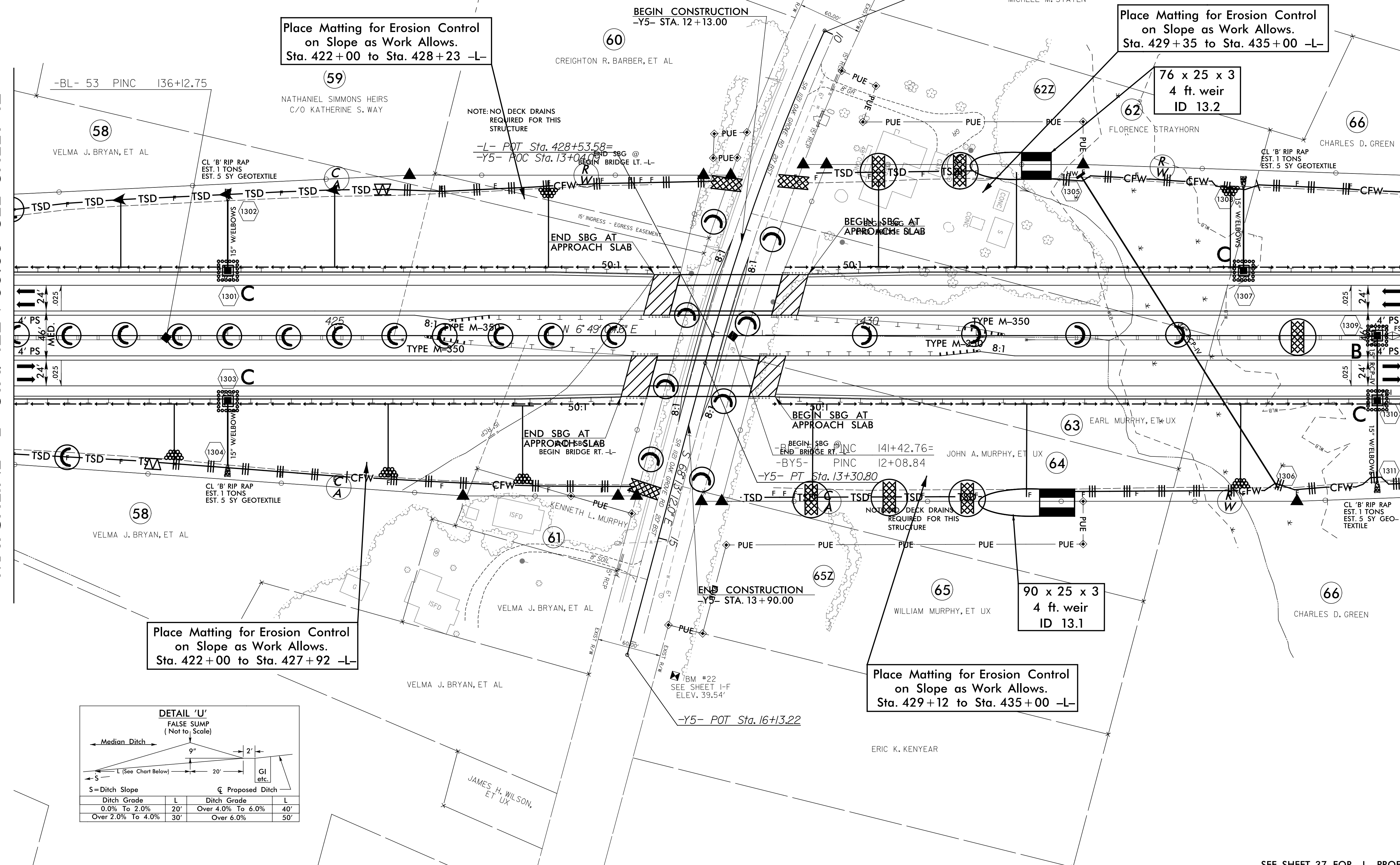
NOTE:
ALL EROSION CONTROL DEVICES SHOWN ARE LOCATED WITHIN RW OR EASEMENT.

PROJECT REFERENCE NO. <i>R-2514D</i>	SHEET NO. EC-41/CONST.13
RW SHEET NO.	
ROADSIDE ENVIRONMENTAL PROJECT ENGINEER	
LEVEL III CERTIFIED BY: STACEY H. BAILEY, PE CERTIFICATION NUMBER: 3074 ISSUED: FEBRUARY 2, 2015	
FINAL EROSION CONTROL FOR CONSTRUCTION SHEET 13	

REVISIONS
 R/W REVISION 7-23-14 (DWG) - ADDED A SECOND CLAIM OF PUE ON PARCEL 62Z (FLORENCE STRAYHORN) AND PARCEL 65Z (WILLIAM MURPHY, ET UX).
 8/17/99
 C:\Users\jbailey\Documents\Projects\2514\Drawings\EC-41\Const\13.dwg
 8/17/99
 JBAILEY@R2514.COM
 JBAILEY@R2514.COM

MATCHLINE -L- STA. 422 + 00.00 SEE SHEET 12

MATCHLINE -L- STA. 435 + 00.00 SEE SHEET 14



SBG - "SHOULDER BERM GUTTER"

SEE SHEET 37 FOR -L- PROFILE
 SEE SHEET 53 FOR -Y5- PROFILE
 SEE SHEETS S-1 THRU S-2 FOR STRUCTURE PLANS