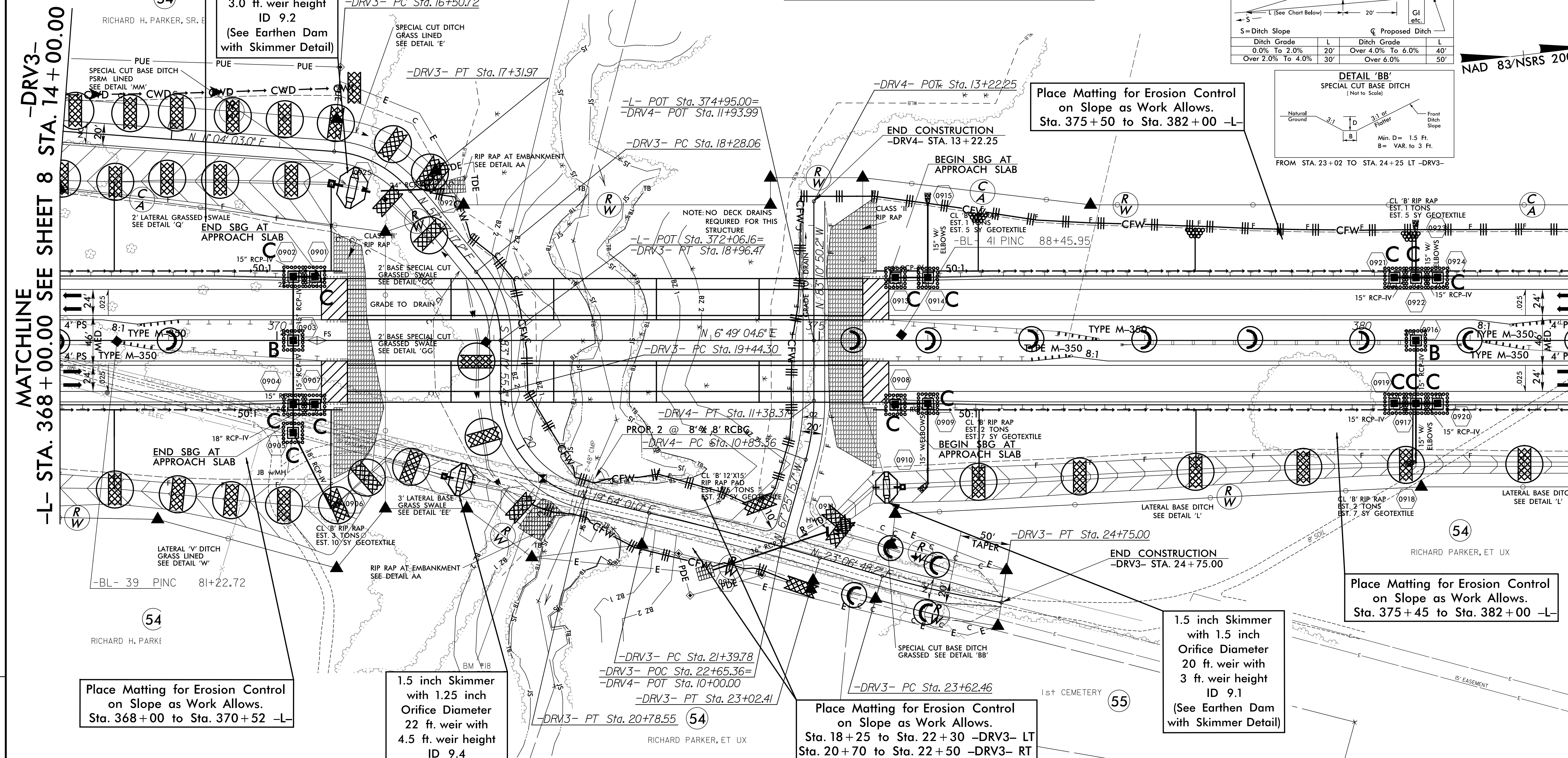
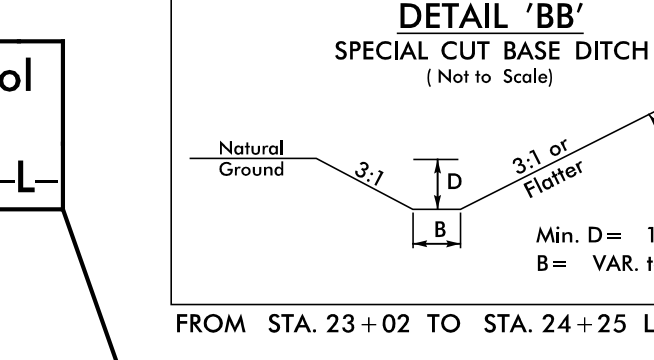
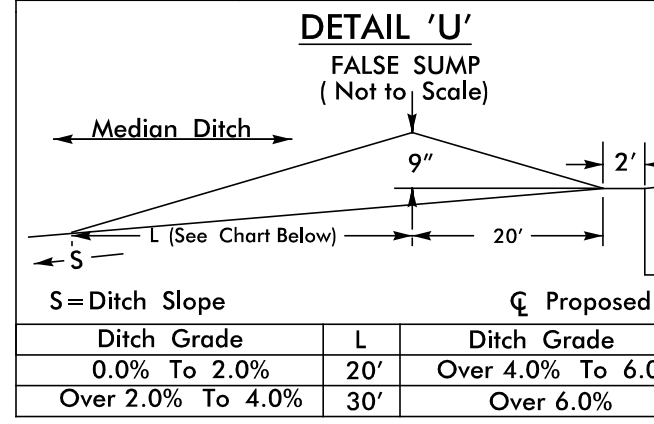
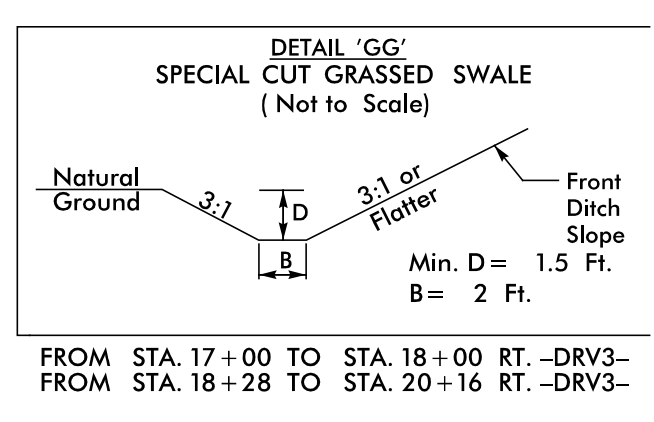
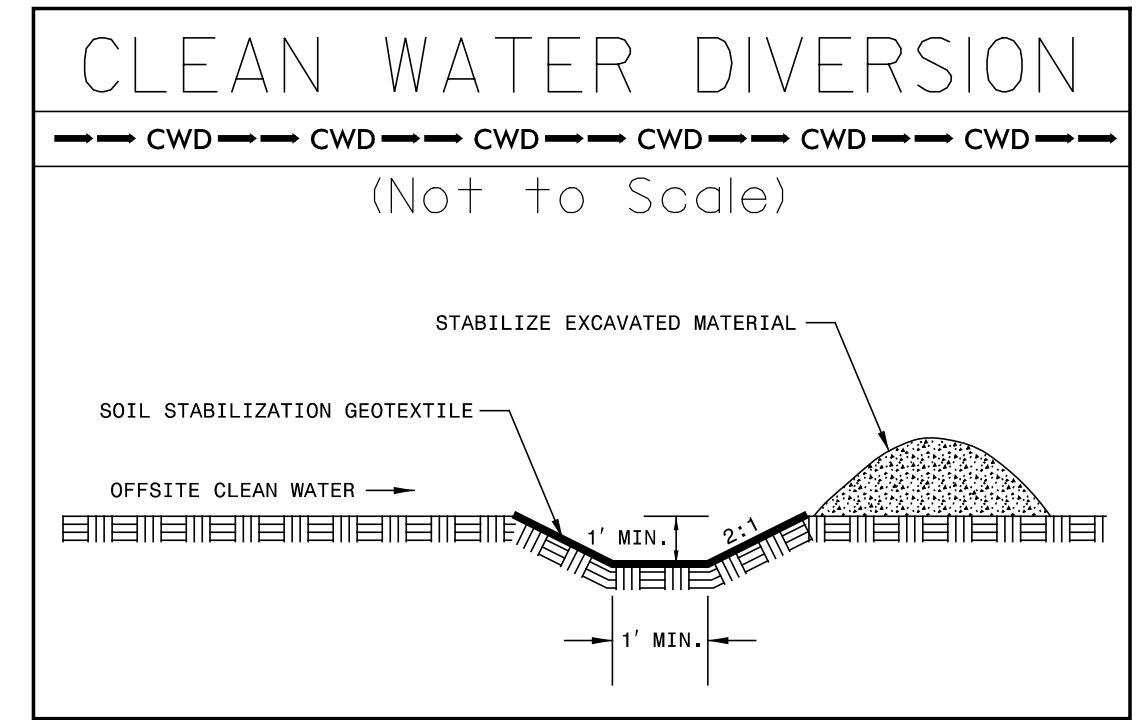
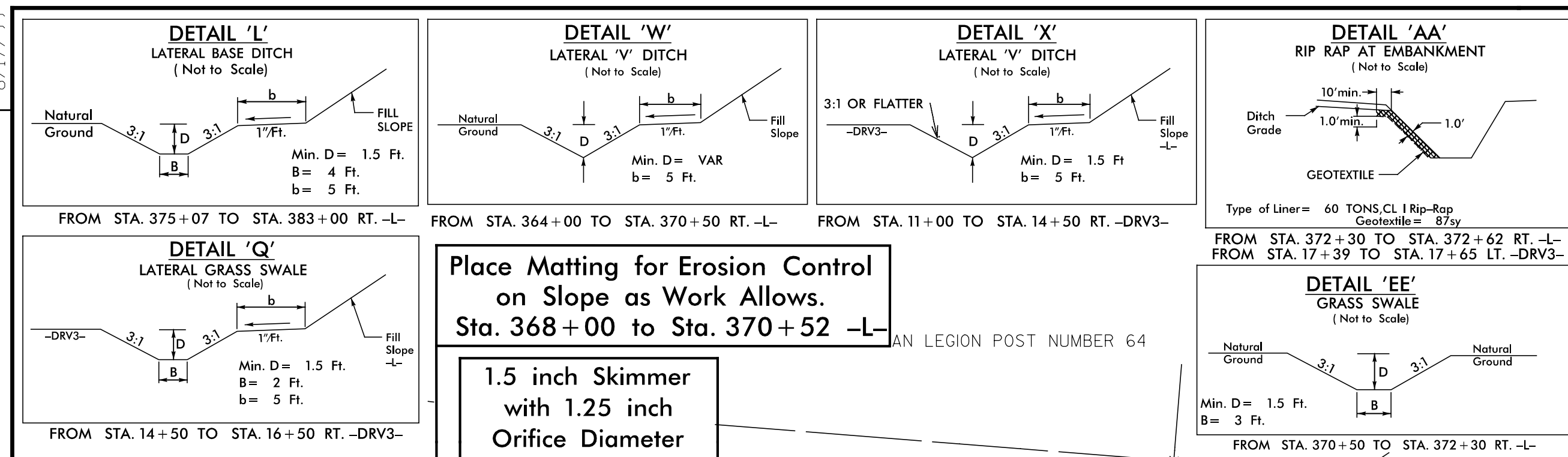


MATCHLINE -L- STA. 382 + 00.00 SEE SHEET 10



Place Matting for Erosion Control on Slope as Work Allows. Sta. 368+00 to Sta. 370+52 -L- AN LEGION POST NUMBER 64

1.5 inch Skimmer with 1.25 inch Orifice Diameter 15 ft. weir with 3.0 ft. weir height ID 9.2 (See Earthen Dam with Skimmer Detail)

Place Matting for Erosion Control on Slope as Work Allows. Sta. 375+50 to Sta. 382+00 -L-

Place Matting for Erosion Control on Slope as Work Allows. Sta. 368+00 to Sta. 370+52 -L-

1.5 inch Skimmer with 1.25 inch Orifice Diameter 22 ft. weir with 4.5 ft. weir height ID 9.4 (See Earthen Dam with Skimmer Detail)

Place Matting for Erosion Control on Slope as Work Allows. Sta. 18+25 to Sta. 22+30 -DRV3- LT Sta. 20+70 to Sta. 22+50 -DRV3- RT

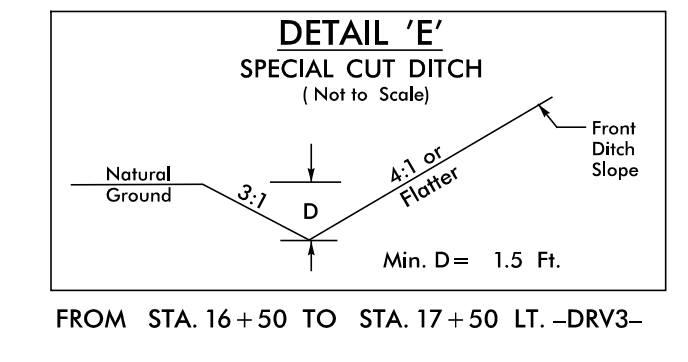
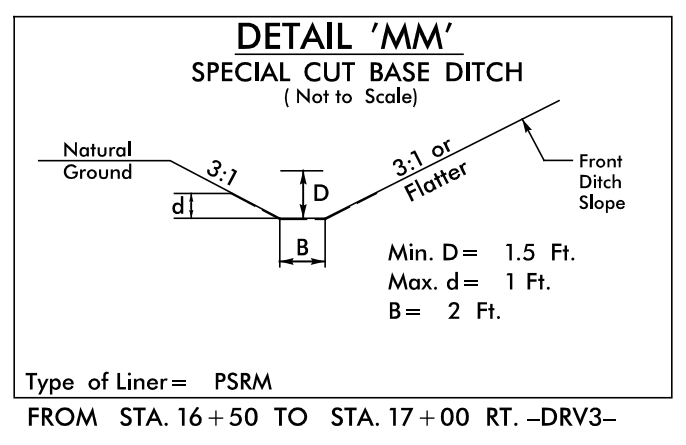
1.5 inch Skimmer with 1.5 inch Orifice Diameter 20 ft. weir with 3 ft. weir height ID 9.1 (See Earthen Dam with Skimmer Detail)

Place Matting for Erosion Control on Slope as Work Allows. Sta. 375+45 to Sta. 382+00 -L-

NOTE:  
CONTRACTOR SHALL PROVIDE INLET PROTECTION FOR PARTIALLY INSTALLED STORM DRAINS. THIS MEASURE SHOULD BE INSTALLED AT THE END OF EACH WORKING DAY.

NOTE:  
CONTRACTOR SHALL MAINTAIN ALL DEVICES AS PROJECT IS BROUGHT UP TO GRADE.

NOTE:  
ALL EROSION CONTROL DEVICES SHOWN ARE LOCATED WITHIN RW OR EASEMENT.



REVISIONS  
R/W REVISION 6-24-14 (DWG) - ADDED PUE TO PARCEL 54 (RICHARD H. PARKER, SR. ET UX) AT THE FOLLOWING LOCATIONS: -Y4- STA. 25+57.00 TO STA. 26+57.00 RT. -Y4- STA. 29+70.00 TO STA. 30+70.00 RT. AND -DRV3- STA. 10+30.00 TO STA. 16+50.72 LT. REVISED THE TOE FROM -DRV3- STA. 10+31.00 TO STA. 16+50.72 LT.  
OM PARCEL 54 (RICHARD H. PARKER, SR. ET UX).  
f:\m\l\psh\09137.dgn

SYSTEMS  
REVISION  
09/13/14

SEE SHEET 35 FOR -L- PROFILE  
SEE SHEET 52 FOR -DRV3- PROFILE  
SEE SHEET 52 FOR -DRV4- PROFILE  
SEE SHEETS S-1 THRU S-2 FOR STRUCTURE PLANS

SBG - "SHOULDER BERM GUTTER"