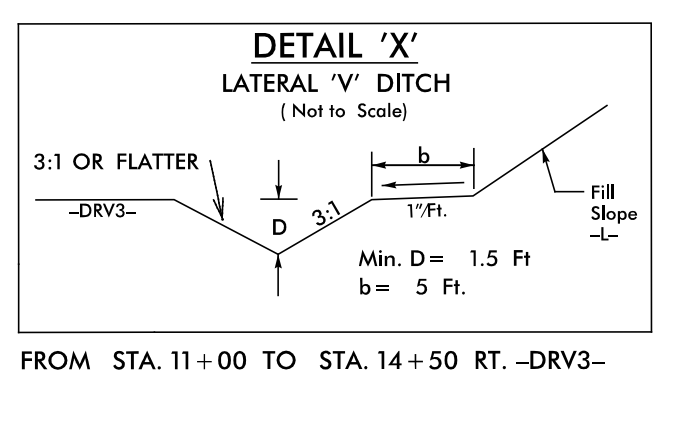
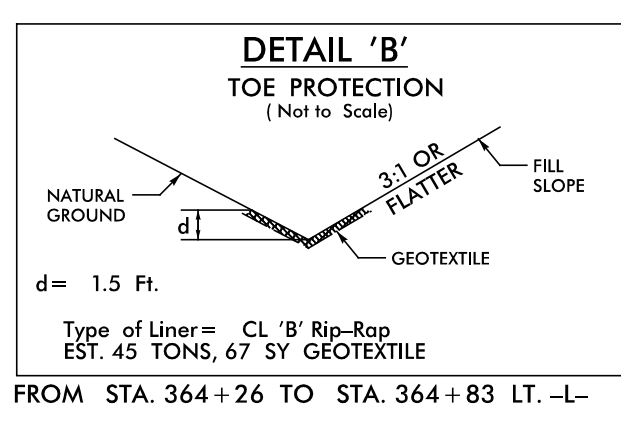
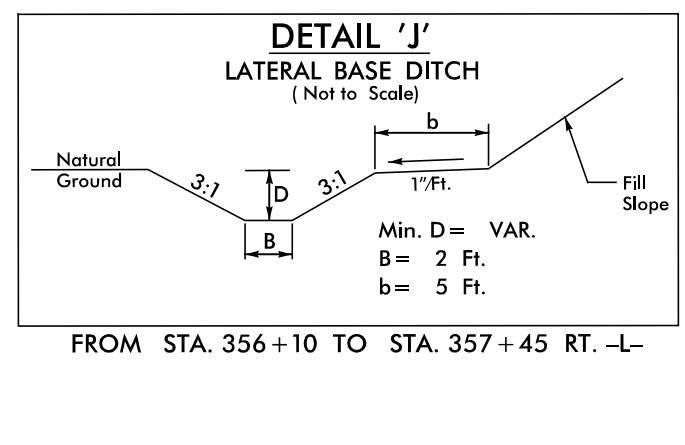
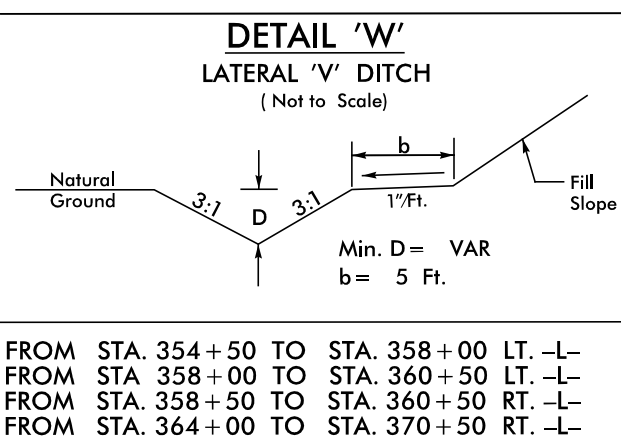
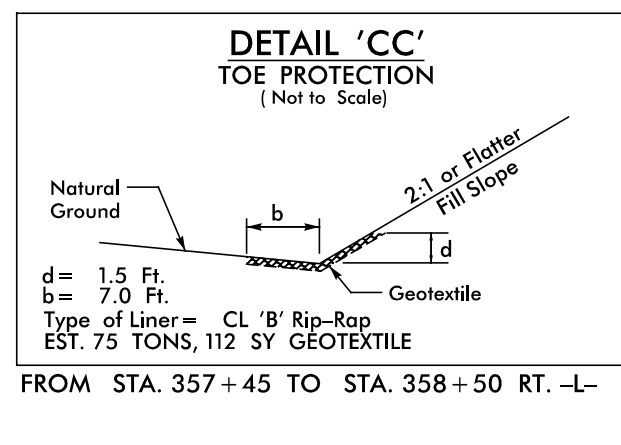
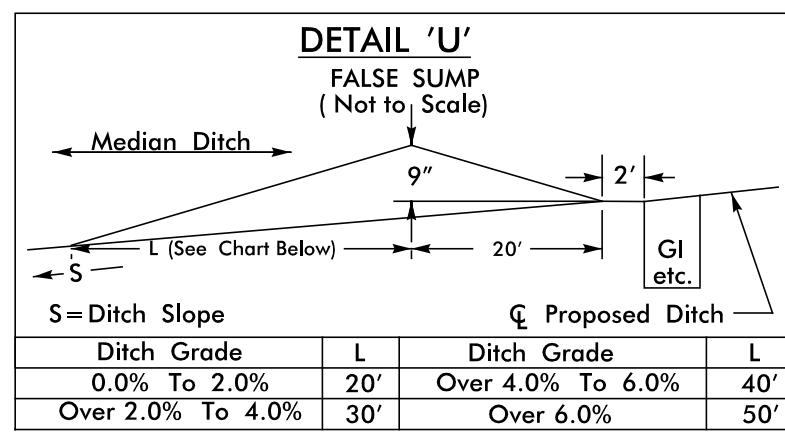


FINAL EROSION CONTROL FOR CONSTRUCTION SHEET 8

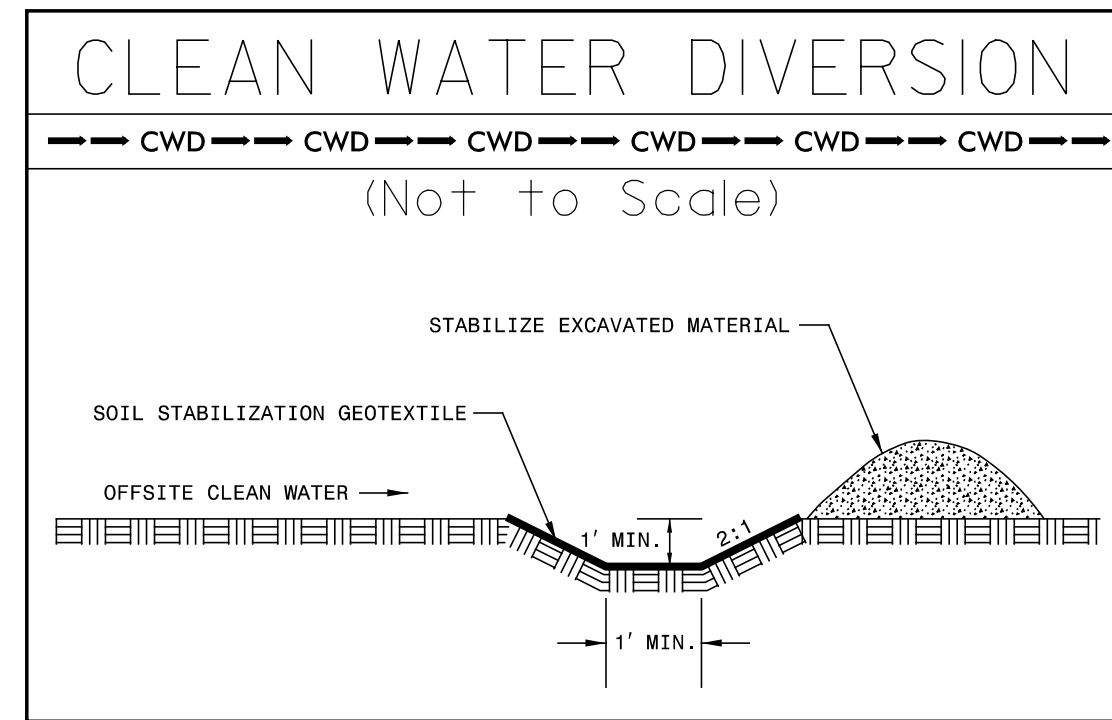
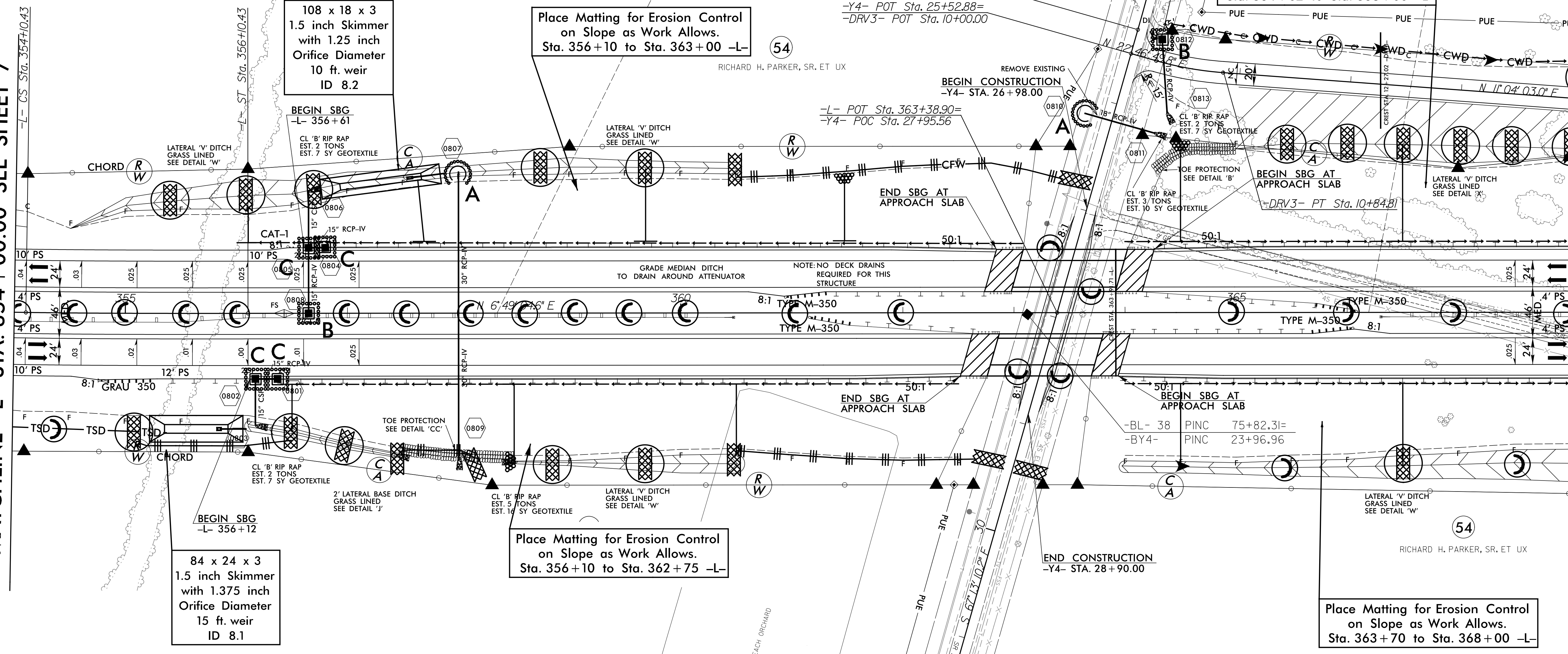
NAD 83/NSRS 2007

Place Matting for Erosion Control on Slope as Work Allows. Sta. 364+02 to Sta. 368+00 -L-



MATCHLINE -L- STA. 354+00.00 SEE SHEET 7

MATCHLINE -DRV3- STA. 368+00.00 SEE SHEET 9 STA. 74+00.00



NOTE:
 CONTRACTOR SHALL PROVIDE INLET PROTECTION FOR PARTIALLY INSTALLED STORM DRAINS. THIS MEASURE SHOULD BE INSTALLED AT THE END OF EACH WORKING DAY.

NOTE:
 CONTRACTOR SHALL MAINTAIN ALL DEVICES AS PROJECT IS BROUGHT UP TO GRADE.

NOTE:
 ALL EROSION CONTROL DEVICES SHOWN ARE LOCATED WITHIN RW OR EASEMENT.

SEE SHEET 34 FOR -L- PROFILE
 SEE SHEET 51 FOR -Y4- PROFILE
 SEE SHEET 51 FOR -DRV3- PROFILE
 SEE SHEETS S-1 THRU S-2 FOR STRUCTURE PLANS

REVISIONS

R/W REVISION 6-24-14 (DMG) - ADDED PUE TO PARCEL 54 (RICHARD H. PARKER, SR. ET UX) AT THE FOLLOWING LOCATIONS: -Y4- STA. 25+57.00 TO STA. 26+57.00 RT., -Y4- STA. 29+70.00 TO STA. 32+70.00 RT., AND -DRV3- STA. 10+30.00 TO STA. 16+50.72 LT. REVISED THE TOE FROM -DRV3- STA. 10+31.00 TO STA. 16+50.72 LT.

Control\CA00D\R2514D.dwg
 RICHARD H. PARKER, SR. ET UX
 RICHARD H. PARKER, SR. ET UX
 RICHARD H. PARKER, SR. ET UX