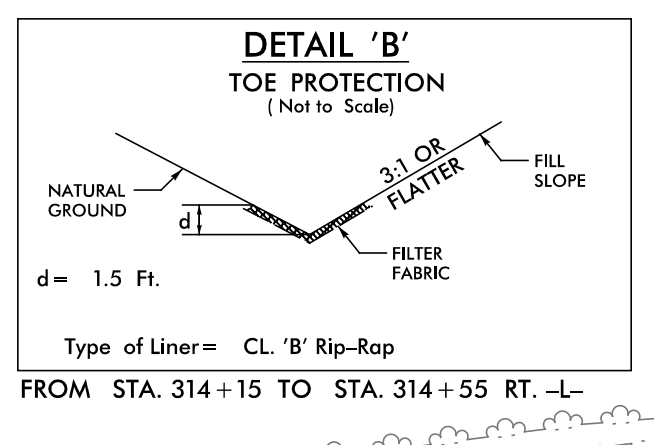
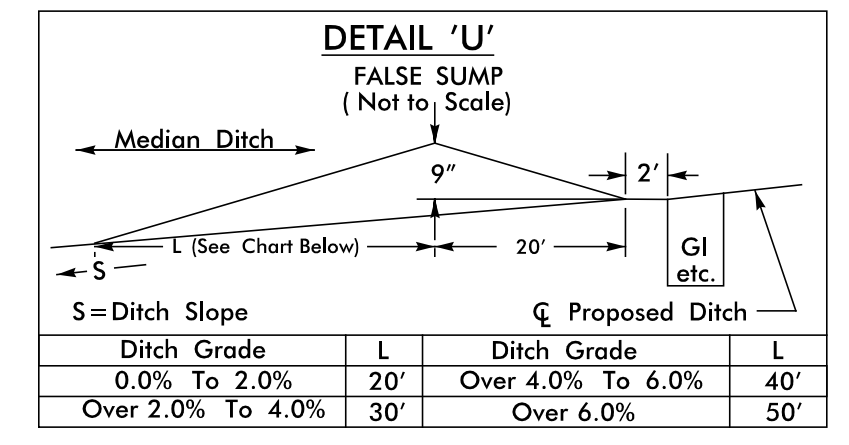
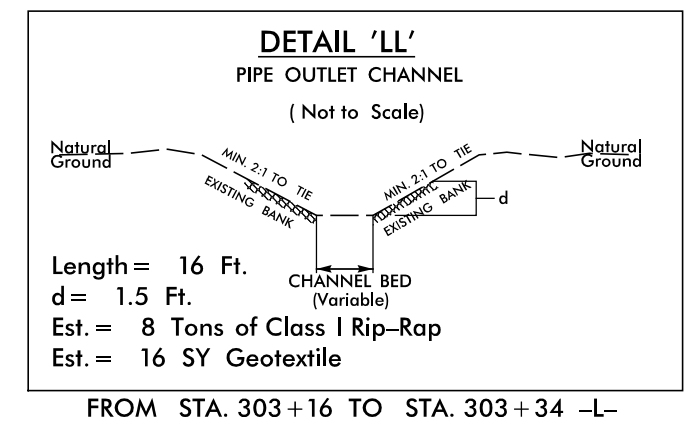


NAD 83/NSRS 2007



Place Matting for Erosion Control on Slope as Work Allows. Sta. 303+00 to Sta. 304+60 -L-

70 x 20 x 3
1.5 inch Skimmer
with 1.0 inch
Orifice Diameter
11 ft. weir
ID 5.1

Place Matting for Erosion Control on Slope as Work Allows. Sta. 311+00 to Sta. 315+00 -L-

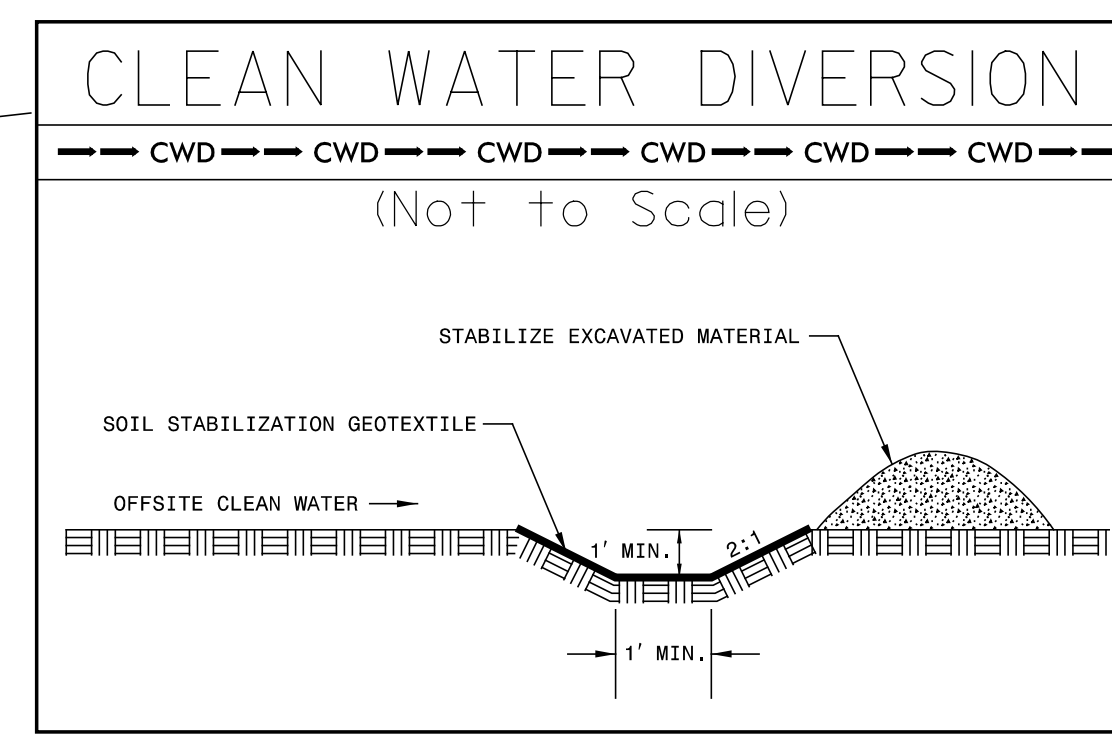
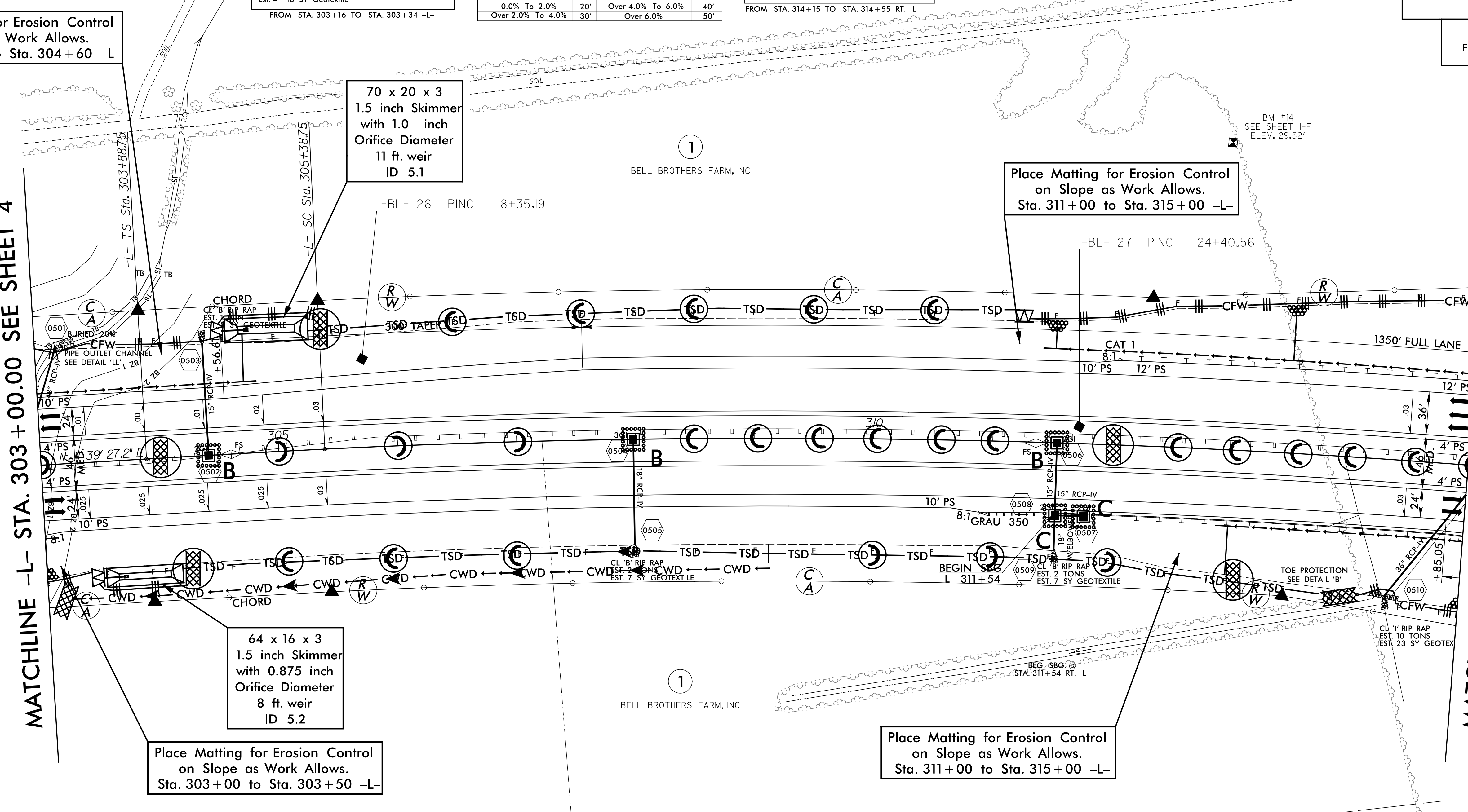
64 x 16 x 3
1.5 inch Skimmer
with 0.875 inch
Orifice Diameter
8 ft. weir
ID 5.2

Place Matting for Erosion Control on Slope as Work Allows. Sta. 303+00 to Sta. 303+50 -L-

Place Matting for Erosion Control on Slope as Work Allows. Sta. 311+00 to Sta. 315+00 -L-

MATCHLINE -L- STA. 303 + 00.00 SEE SHEET 4

MATCHLINE -L- STA. 315 + 00.00 SEE SHEET 6



NOTE: CONTRACTOR SHALL PROVIDE INLET PROTECTION FOR PARTIALLY INSTALLED STORM DRAINS. THIS MEASURE SHOULD BE INSTALLED AT THE END OF EACH WORKING DAY.

NOTE: CONTRACTOR SHALL MAINTAIN ALL DEVICES AS PROJECT IS BROUGHT UP TO GRADE.

NOTE: ALL EROSION CONTROL DEVICES SHOWN ARE LOCATED WITHIN RW OR EASEMENT.

REVISIONS

8/17/99
Control\NCADD\2514D_hydr\final\psh_05133.dgn
SYSTEMS
RAH
ICA ENGINEERING, INC.