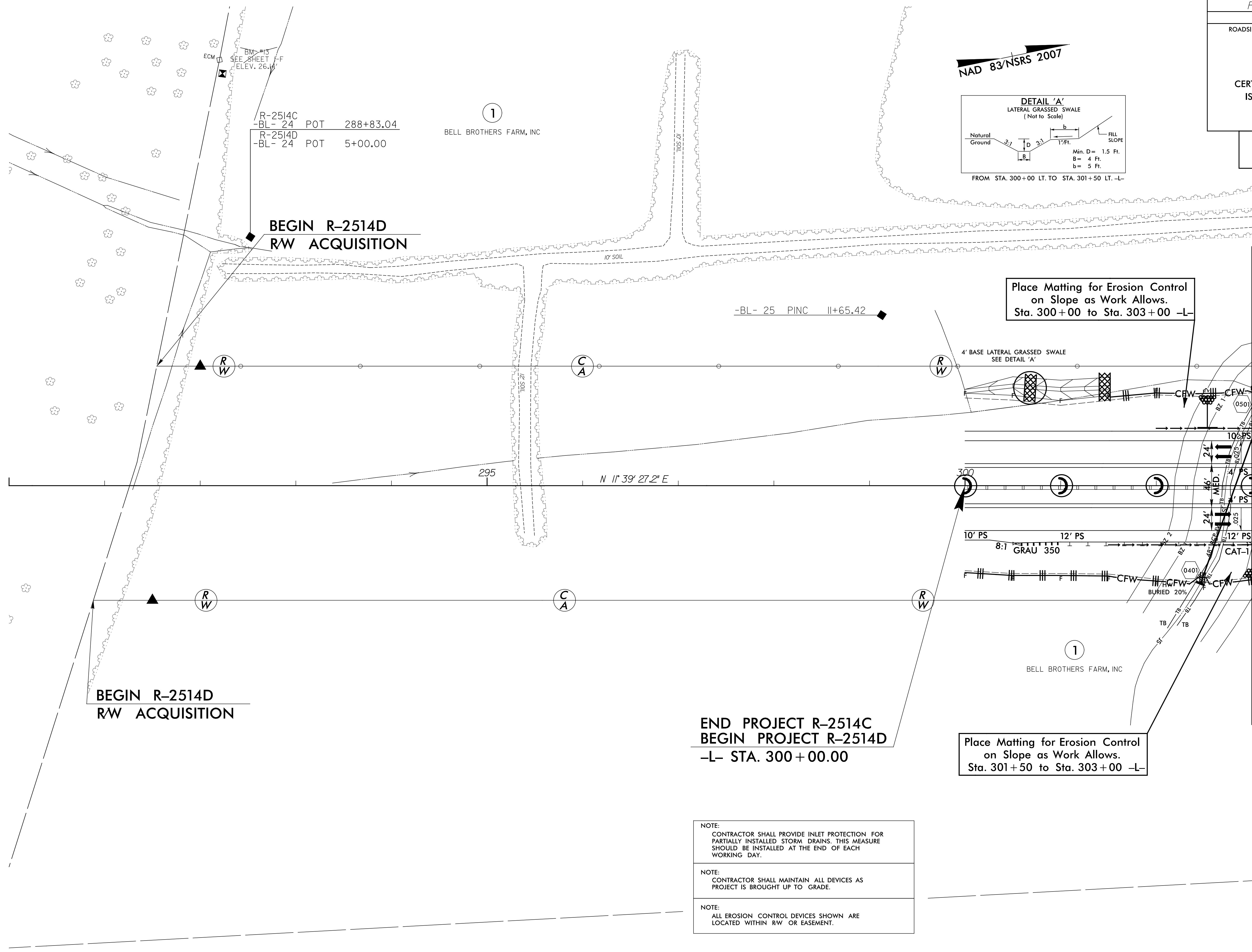


PROJECT REFERENCE NO.	SHEET NO.
R-2514D	EC-32/CONST.4
RW SHEET NO.	
ROADSIDE ENVIRONMENTAL PROJECT ENGINEER	
LEVEL III CERTIFIED BY: STACEY H. BAILEY, PE CERTIFICATION NUMBER: 3074 ISSUED: FEBRUARY 2, 2015	
FINAL EROSION CONTROL FOR CONSTRUCTION SHEET 4	

8/17/99
 REVISIONS
 8:55:58 SYSTEMS 8/17/99
 R-2514D.dgn
 Control\CA000\R2514D_hydr.fmo1.psh_104132.dgn
 ICA ENGINEERING, INC.



- NOTE:
CONTRACTOR SHALL PROVIDE INLET PROTECTION FOR PARTIALLY INSTALLED STORM DRAINS. THIS MEASURE SHOULD BE INSTALLED AT THE END OF EACH WORKING DAY.
- NOTE:
CONTRACTOR SHALL MAINTAIN ALL DEVICES AS PROJECT IS BROUGHT UP TO GRADE.
- NOTE:
ALL EROSION CONTROL DEVICES SHOWN ARE LOCATED WITHIN RW OR EASEMENT.