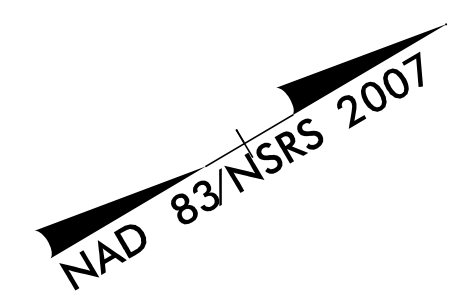
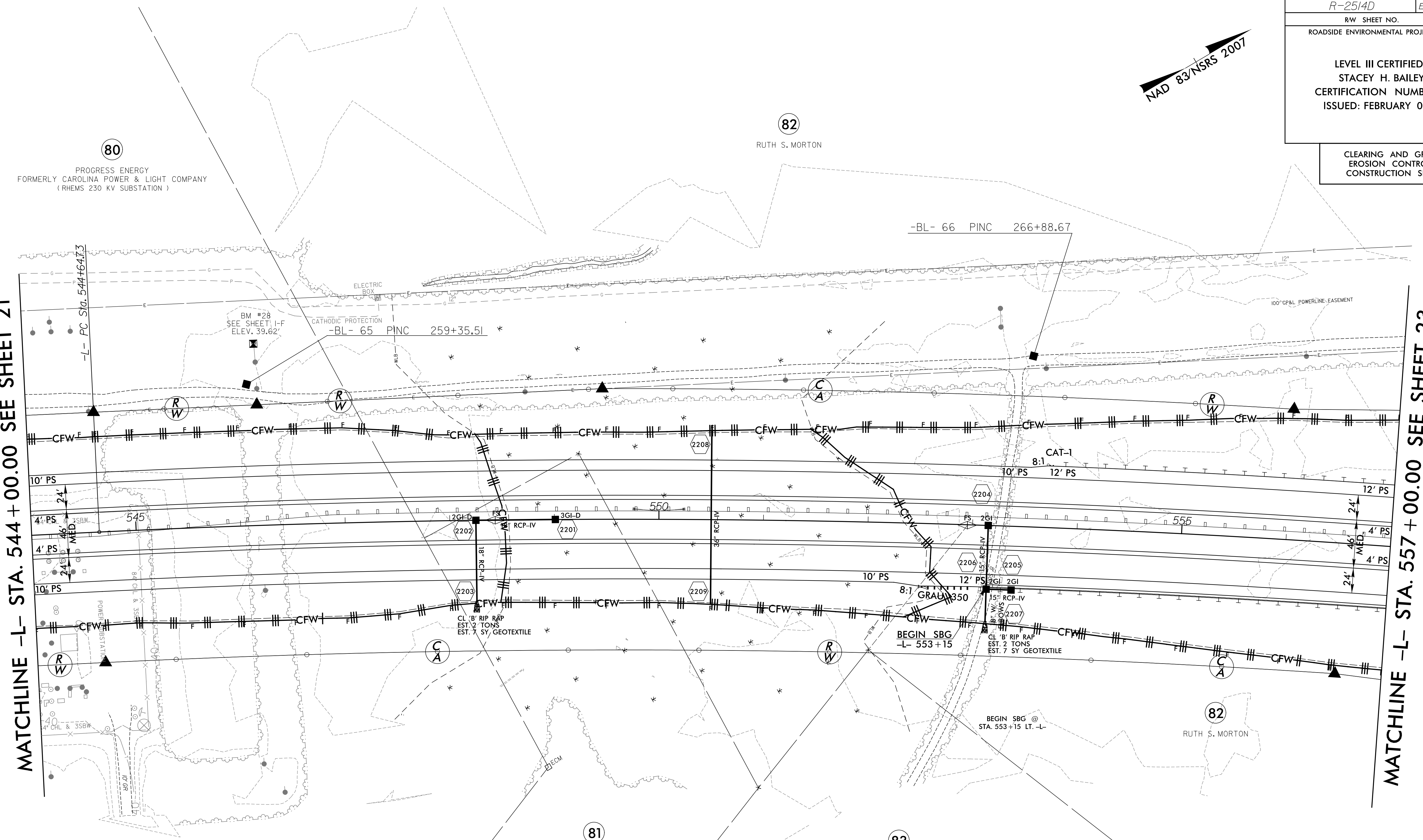


CLEARING AND GRUBBING
EROSION CONTROL FOR
CONSTRUCTION SHEET 22



MATCHLINE -L- STA. 544 + 00.00 SEE SHEET 21

MATCHLINE -L- STA. 557 + 00.00 SEE SHEET 23



REVISIONS

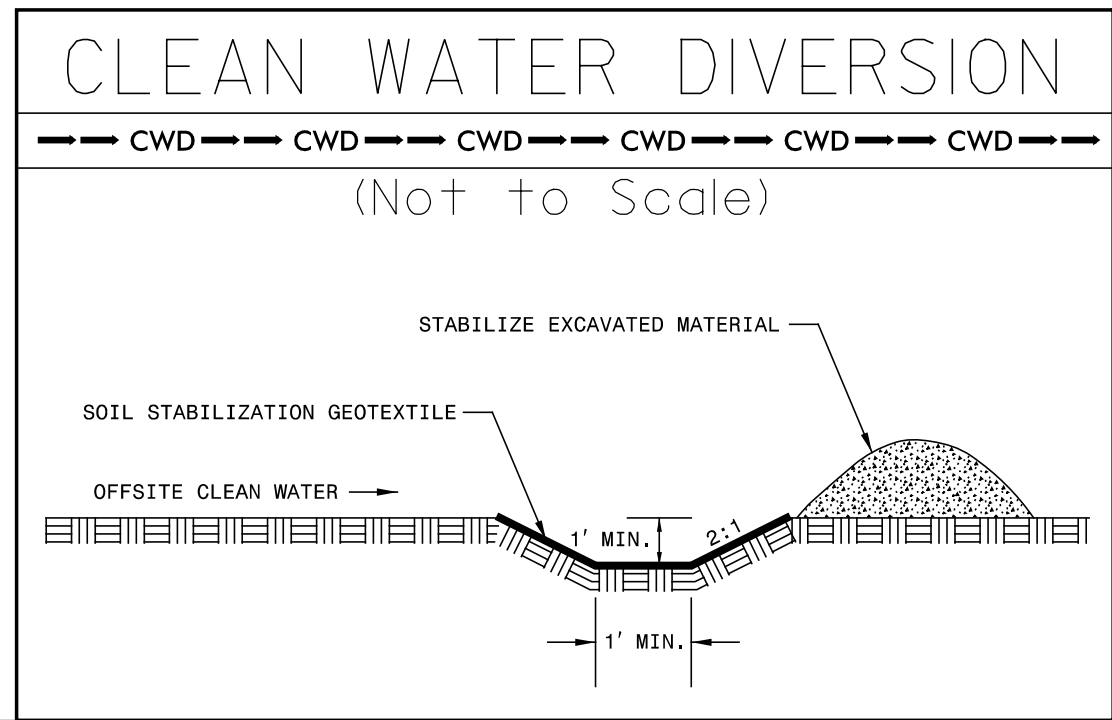
8/17/99
8:55:55 SYSTEMTIME: 8:55:55
R:\A\p\station\Control\CADD\R2514D_hyd\ec&g_psh_22.dgn
RCA ENGINEERING, INC.

80
PROGRESS ENERGY
FORMERLY CAROLINA POWER & LIGHT COMPANY
(RHEMS 230 KV SUBSTATION)

81
JACKIE W. MIRAYA

83
RUTHIE M. BLAND

82
RUTH S. MORTON



- NOTE:
PLACE TEMPORARY ROCK SEDIMENT DAMS TYPE - B AND TEMPORARY ROCK SILT CHECKS TYPE - A AT DRAINAGE OUTLETS.
- NOTE:
PERIMETER EROSION CONTROL MEASURES SHALL BE INSTALLED DURING CLEARING AND GRUBBING PHASE.
- NOTE:
ALL EROSION CONTROL DEVICES SHOWN ARE LOCATED WITHIN EXISTING RW OR EASEMENT.
- NOTE:
ESTABLISH SUFFICIENT BUFFER FOR WATER COURSE.