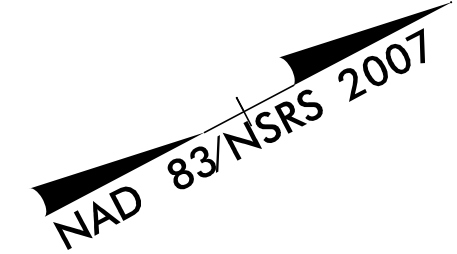


LEVEL III CERTIFIED BY:
 STACEY H. BAILEY, PE
 CERTIFICATION NUMBER: 3074
 ISSUED: FEBRUARY 02, 2015

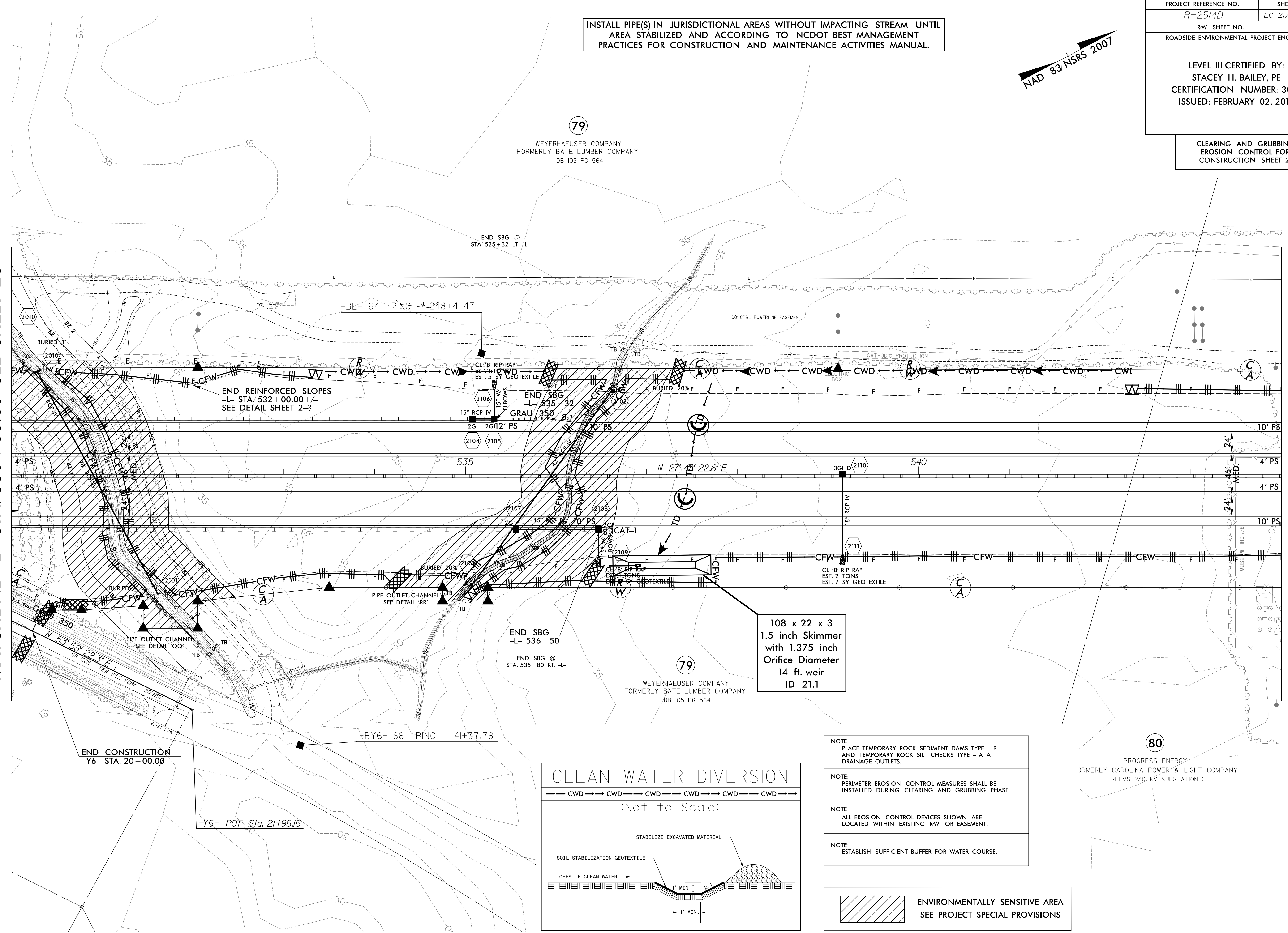
CLEARING AND GRUBBING
 EROSION CONTROL FOR
 CONSTRUCTION SHEET 21



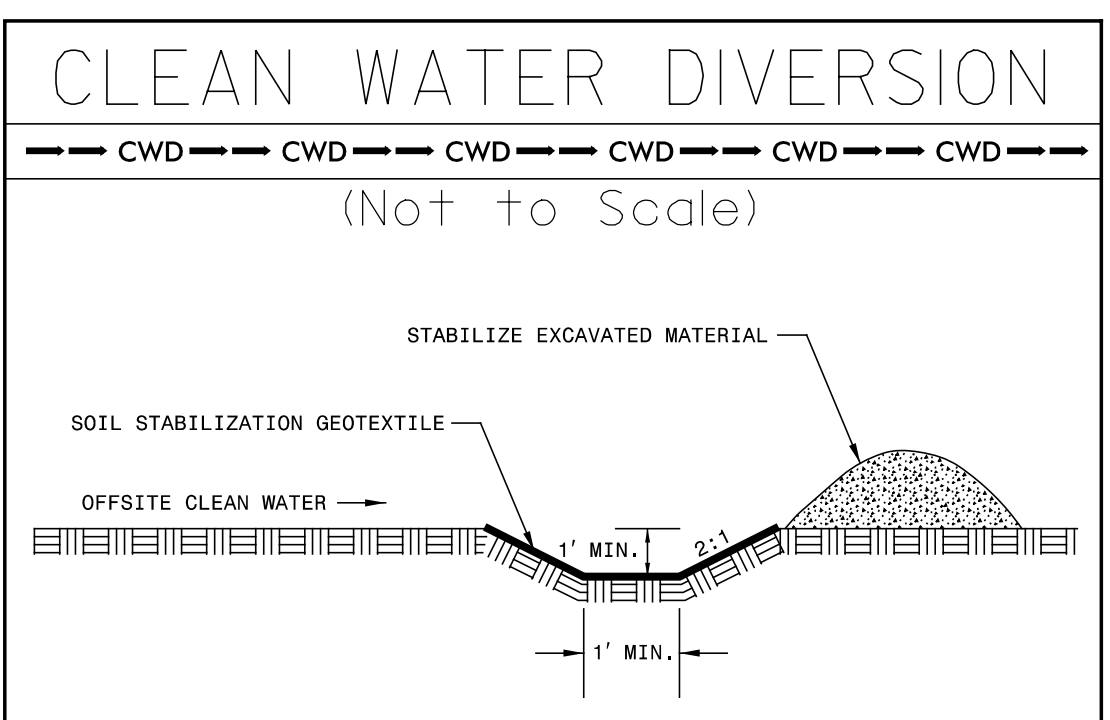
INSTALL PIPE(S) IN JURISDICTIONAL AREAS WITHOUT IMPACTING STREAM UNTIL
 AREA STABILIZED AND ACCORDING TO NCDOT BEST MANAGEMENT
 PRACTICES FOR CONSTRUCTION AND MAINTENANCE ACTIVITIES MANUAL.

MATCHLINE -L- STA. 530 + 00.00 SEE SHEET 20

MATCHLINE -L- STA. 544 + 00.00 SEE SHEET 22



108 x 22 x 3
 1.5 inch Skimmer
 with 1.375 inch
 Orifice Diameter
 14 ft. weir
 ID 21.1



- NOTE: PLACE TEMPORARY ROCK SEDIMENT DAMS TYPE - B AND TEMPORARY ROCK SILT CHECKS TYPE - A AT DRAINAGE OUTLETS.
- NOTE: PERIMETER EROSION CONTROL MEASURES SHALL BE INSTALLED DURING CLEARING AND GRUBBING PHASE.
- NOTE: ALL EROSION CONTROL DEVICES SHOWN ARE LOCATED WITHIN EXISTING RW OR EASEMENT.
- NOTE: ESTABLISH SUFFICIENT BUFFER FOR WATER COURSE.

ENVIRONMENTALLY SENSITIVE AREA
 SEE PROJECT SPECIAL PROVISIONS

SBG - "SHOULDER BERM GUTTER"

SEE SHEET 41 FOR -L- PROFILE

REVISIONS
 R/W REVISION 03-11-14 (DMG) - THE TDE AT -L- STA. 531+75.00 RT. AND -L- STA. 535+00.00 RT. WAS ELIMINATED FROM PARCEL 79 (WEYERHAEUSER COMPANY FORMERLY BATE LUMBER COMPANY).
 8/17/99
 C:\SYSTEM32\SYSTEM32\RA\Project\21\Revision\Control\CA00D\R2514D_hyd.cad.psh_21.dgn
 SYSTEM32\SYSTEM32\RA\Project\21\Revision\CA\ENGINEERING, INC.