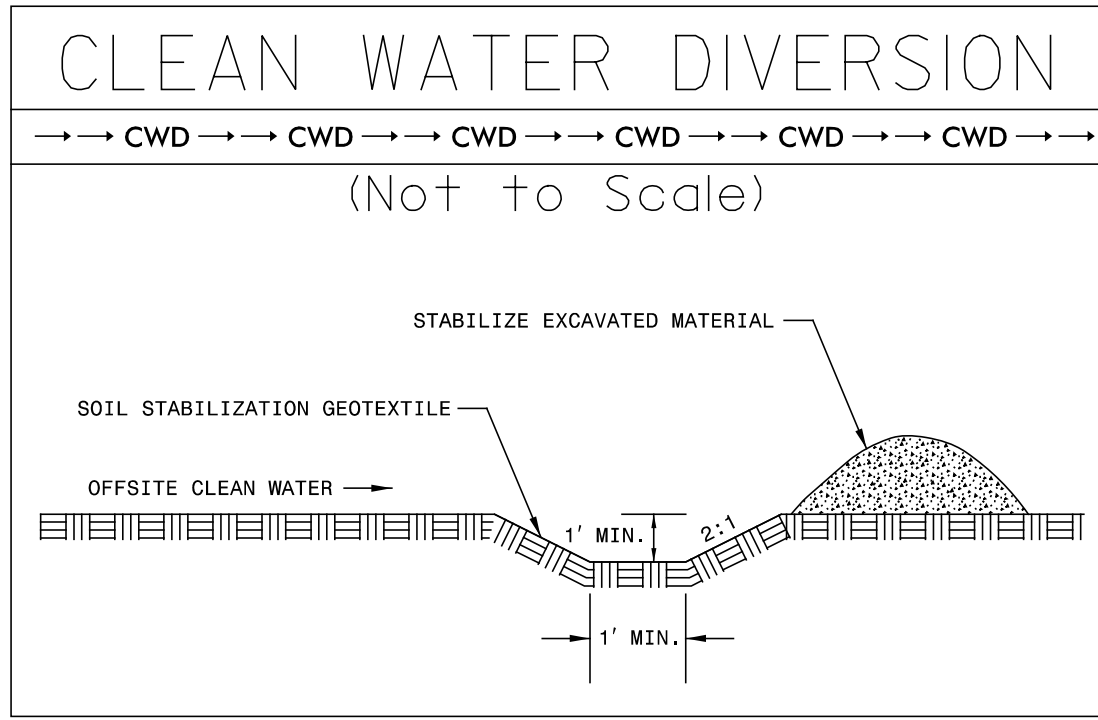


PROJECT REFERENCE NO. <i>R-2514D</i>	SHEET NO. <i>EC-13/CONST.13</i>
RW SHEET NO. ROADSIDE ENVIRONMENTAL PROJECT ENGINEER	

LEVEL III CERTIFIED BY:
 STACEY H. BAILEY, PE
 CERTIFICATION NUMBER: 3074
 ISSUED: FEBRUARY 02, 2015

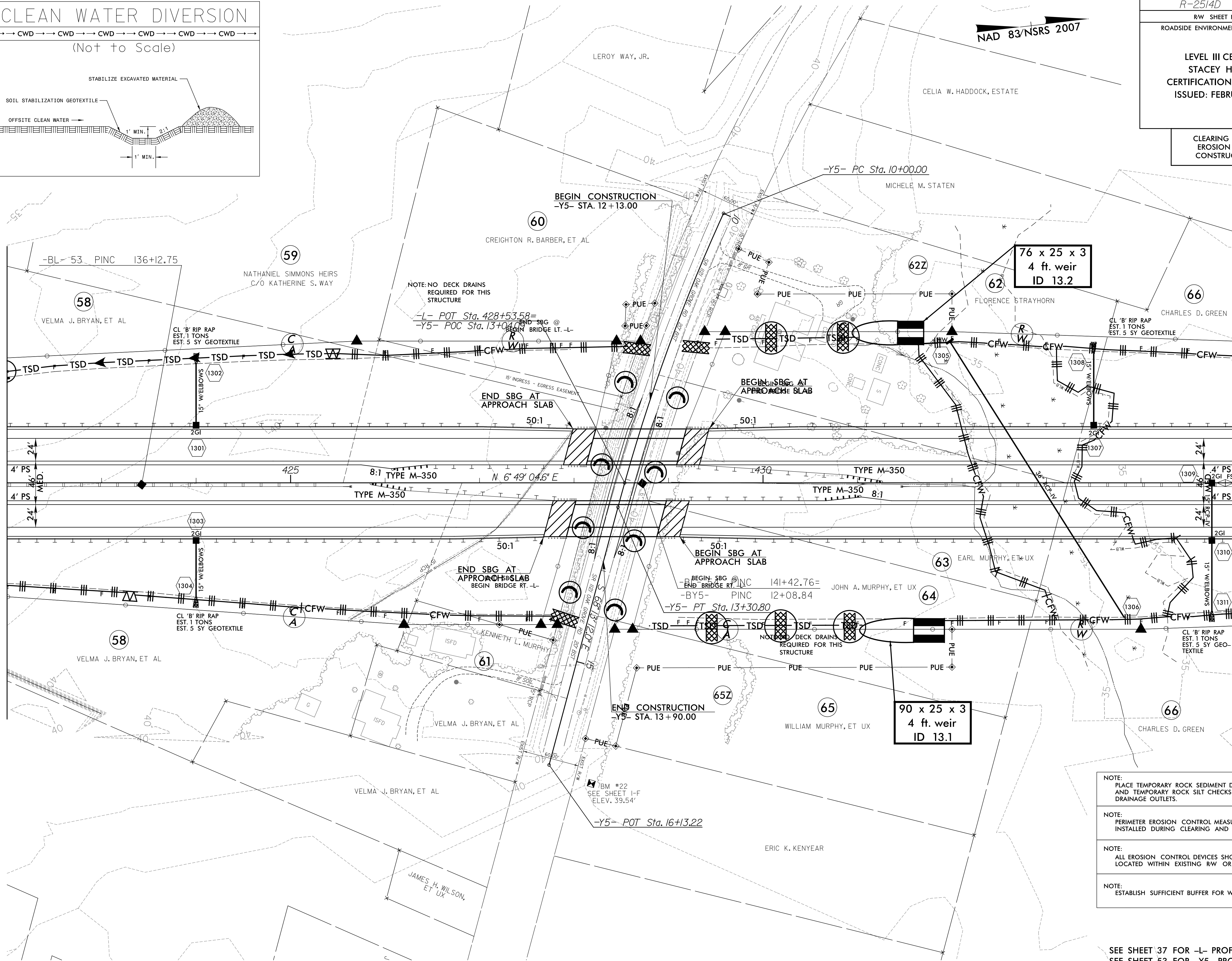
CLEARING AND GRUBBING
 EROSION CONTROL FOR
 CONSTRUCTION SHEET 13

NAD 83/NSRS 2007



MATCHLINE -L- STA. 422 + 00.00 SEE SHEET 12

MATCHLINE -L- STA. 435 + 00.00 SEE SHEET 14



REVISIONS
 R/W REVISION 7-23-14 (DWG) - ADDED A SECOND CLAIM OF PUE ON PARCEL 62Z (FLORENCE STRAYHORN) AND PARCEL 65Z (WILLIAM MURPHY, ET UX).

8/17/99
 \s\psh\SYSTEMS\psh\Projects\2514\2514D\hyd\ec&g_psh_13.dgn
 2514-EC-13-CONST-13.dwg
 RJA
 2/2/15
 ICA ENGINEERING, INC.

- NOTE:
PLACE TEMPORARY ROCK SEDIMENT DAMS TYPE - B AND TEMPORARY ROCK SILT CHECKS TYPE - A AT DRAINAGE OUTLETS.
- NOTE:
PERIMETER EROSION CONTROL MEASURES SHALL BE INSTALLED DURING CLEARING AND GRUBBING PHASE.
- NOTE:
ALL EROSION CONTROL DEVICES SHOWN ARE LOCATED WITHIN EXISTING RW OR EASEMENT.
- NOTE:
ESTABLISH SUFFICIENT BUFFER FOR WATER COURSE.

SBG - "SHOULDER BERM GUTTER"

SEE SHEET 37 FOR -L- PROFILE
 SEE SHEET 53 FOR -Y5- PROFILE
 SEE SHEETS S-1 THRU S-? FOR STRUCTURE PLANS