

CLEARING AND GRUBBING
EROSION CONTROL FOR
CONSTRUCTION SHEET 8

NAD 83/NSRS 2007

MATCHLINE -L- STA. 354 + 00.00 SEE SHEET 7

MATCHLINE -DRV3- STA. 368 + 00.00 SEE SHEET 9 STA. 74 + 00.00

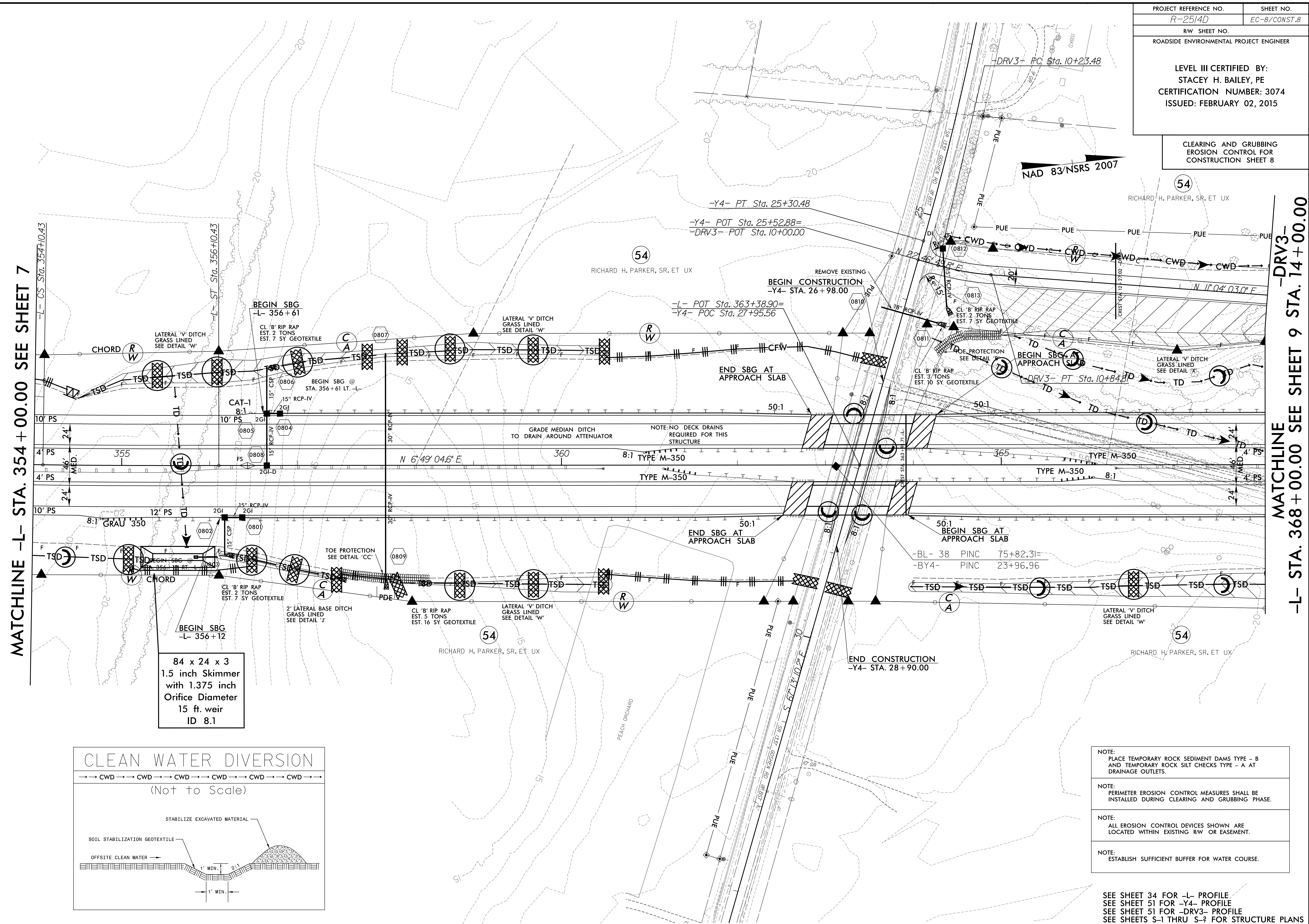
REVISIONS

R/W REVISION 6-24-14 (DMG) - ADDED PUE TO PARCEL 54 (RICHARD H. PARKER, SR. ET UX) AT THE FOLLOWING LOCATIONS: -Y4- STA. 25+57.00 TO STA. 26+57.00 RT., -Y4- STA. 29+70.00 TO STA. 32+70.00 RT., AND -DRV3- STA. 10+30.00 TO STA. 16+50.72 LT. REVISED THE TOE FROM -DRV3- STA. 10+31.00 TO STA. 16+50.72 LT.

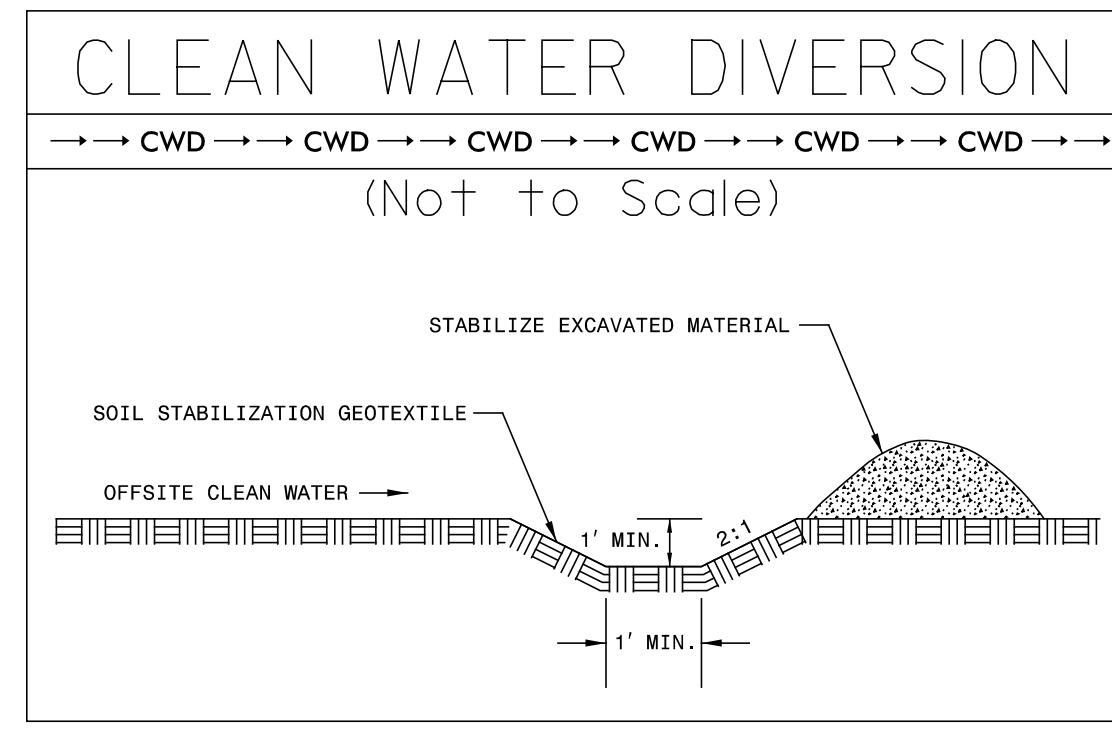
8/17/99

Control\CA00D\R2514D.dwg

SYSTEMS ENGINEERING
ROADSIDE ENVIRONMENTAL PROJECT ENGINEERING, INC.



84 x 24 x 3
1.5 inch Skimmer
with 1.375 inch
Orifice Diameter
15 ft. weir
ID 8.1



NOTE:
PLACE TEMPORARY ROCK SEDIMENT DAMS TYPE - B
AND TEMPORARY ROCK SILT CHECKS TYPE - A AT
DRAINAGE OUTLETS.

NOTE:
PERIMETER EROSION CONTROL MEASURES SHALL BE
INSTALLED DURING CLEARING AND GRUBBING PHASE.

NOTE:
ALL EROSION CONTROL DEVICES SHOWN ARE
LOCATED WITHIN EXISTING RW OR EASEMENT.

NOTE:
ESTABLISH SUFFICIENT BUFFER FOR WATER COURSE.

SEE SHEET 34 FOR -L- PROFILE
SEE SHEET 51 FOR -Y4- PROFILE
SEE SHEET 51 FOR -DRV3- PROFILE
SEE SHEETS S-1 THRU S-2 FOR STRUCTURE PLANS