

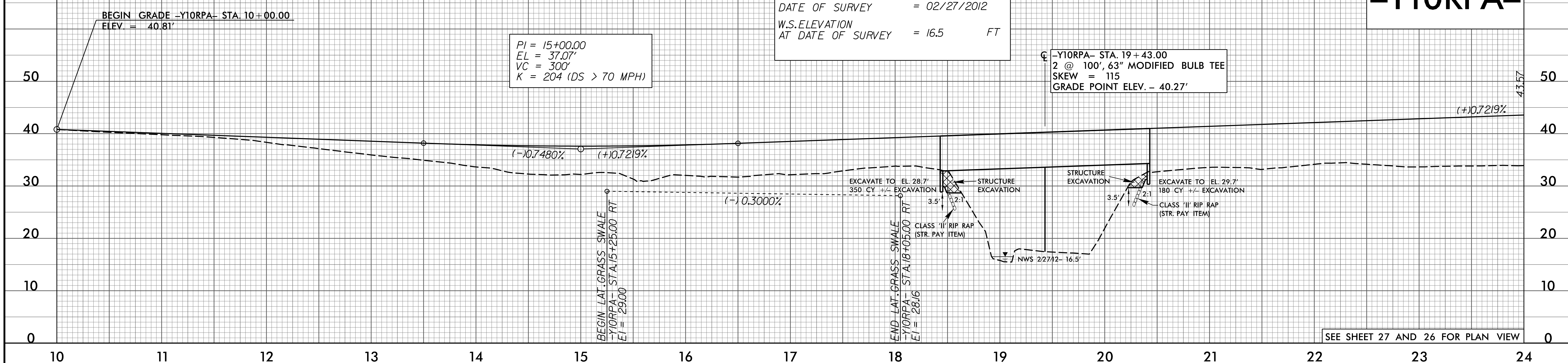
5/28/99

PROJECT REFERENCE NO. R-2514D	SHEET NO. 58
ROADWAY DESIGN ENGINEER DANIEL W. GARDNER, JR. SEAL 033871 3/24/2012	HYDRAULICS ENGINEER DANIEL W. GARDNER, JR. SEAL 039745 3/23/2012

**BRIDGE HYDRAULIC DATA**

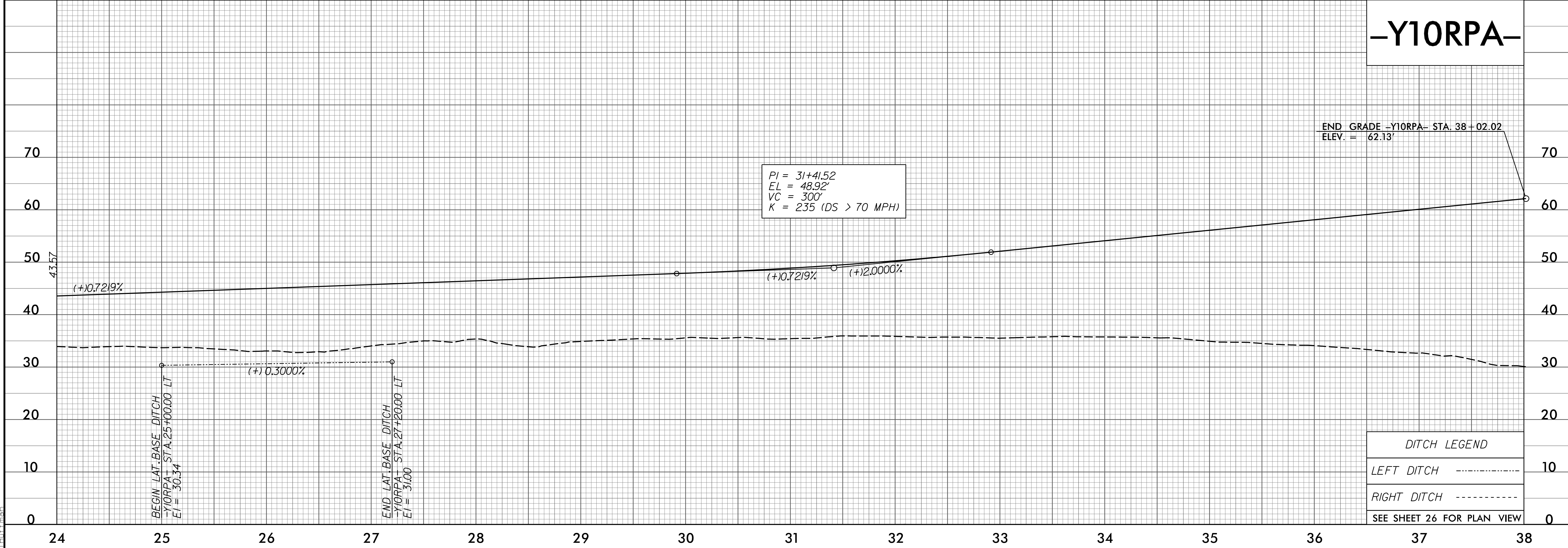
DESIGN DISCHARGE = 390 CFS  
 DESIGN FREQUENCY = 50 YRS  
 DESIGN HW ELEVATION = 21.4 FT  
 BASE DISCHARGE = 480 CFS  
 BASE FREQUENCY = 100 YRS  
 BASE HW ELEVATION = 21.83 FT  
 OVERTOPPING DISCHARGE = N/A CFS  
 OVERTOPPING FREQUENCY = 500+ YRS  
 OVERTOPPING ELEVATION = 33.0 FT

= FT  
 DATE OF SURVEY = 02/27/2012  
 W.S. ELEVATION AT DATE OF SURVEY = 16.5 FT



**-Y1ORPA-**

**-Y1ORPA-**



**DITCH LEGEND**

LEFT DITCH	-----	10
RIGHT DITCH	-----	10

SEE SHEET 26 FOR PLAN VIEW

3/15/2015  
P:\86522-01\Cadd\2514D\Roadway\Proc\NR2514D\_Rdy.plt.dgn  
THURMAN