

5/28/99

PROJECT REFERENCE NO. R-2514D	SHEET NO. 52
ROADWAY DESIGN ENGINEER DANIEL W. GARDNER, JR. SEAL 033871 3/24/05	HYDRAULICS ENGINEER DANIEL W. GARDNER, JR. SEAL 039745 3/23/05

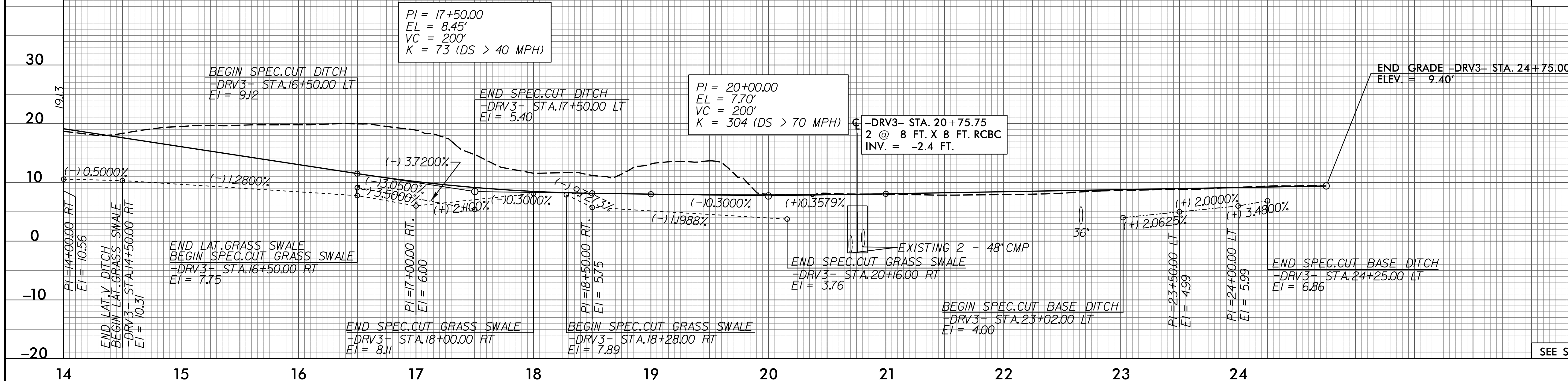
**CULVERT HYDRAULIC DATA**

DESIGN DISCHARGE	= 280	CFS
DESIGN FREQUENCY	= 10	YRS
DESIGN HW ELEVATION	= 2.8	FT
BASE DISCHARGE	= 600	CFS
BASE FREQUENCY	= 100	YRS
BASE HW ELEVATION	= 4.87	FT
OVERTOPPING DISCHARGE	= 1100	CFS
OVERTOPPING FREQUENCY	= 500+	YRS
OVERTOPPING ELEVATION	= 7.8	FT

**PIPE HYDRAULIC DATA**  
DRAINAGE STRUCTURE NO.0912

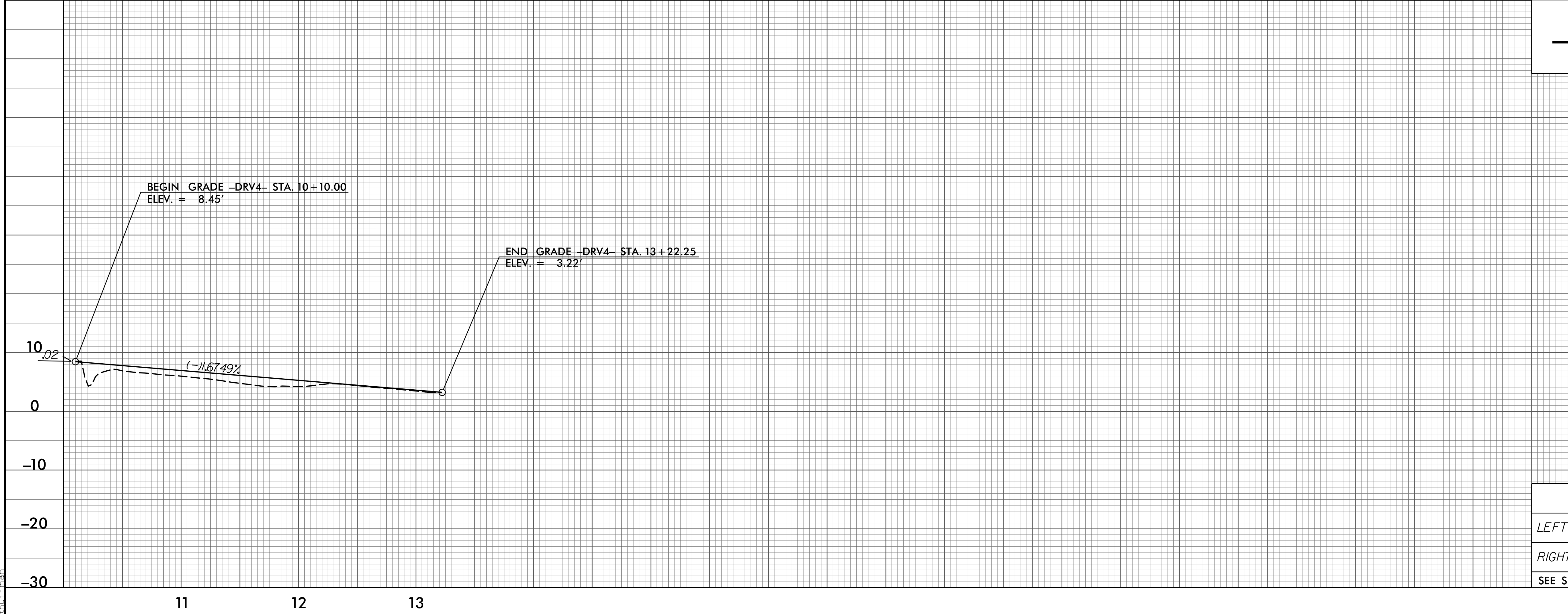
DRAINAGE AREA	= 9	AC
DESIGN FREQUENCY	= 25	YRS
DESIGN DISCHARGE	= 33	CFS
DESIGN HW ELEVATION	= 6.9	FT
100 YEAR DISCHARGE	= 38	CFS
100 YEAR HW ELEVATION	= 12.7	FT
OVERTOPPING FREQUENCY	= 500+	YRS
OVERTOPPING DISCHARGE	= 60	CFS
OVERTOPPING ELEVATION	= 8.8	FT

# -DRV3-



SEE SHEET 9 FOR PLAN VIEW

# -DRV4-



**DITCH LEGEND**

LEFT DITCH	-----	-20
RIGHT DITCH	-----	-20

SEE SHEET 9 FOR PLAN VIEW

3/20/2015 1:18:22 PM F:\Cadd\2514D\Roadway\Proc\2514D\_Rdy.pfl.dgn