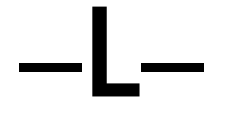


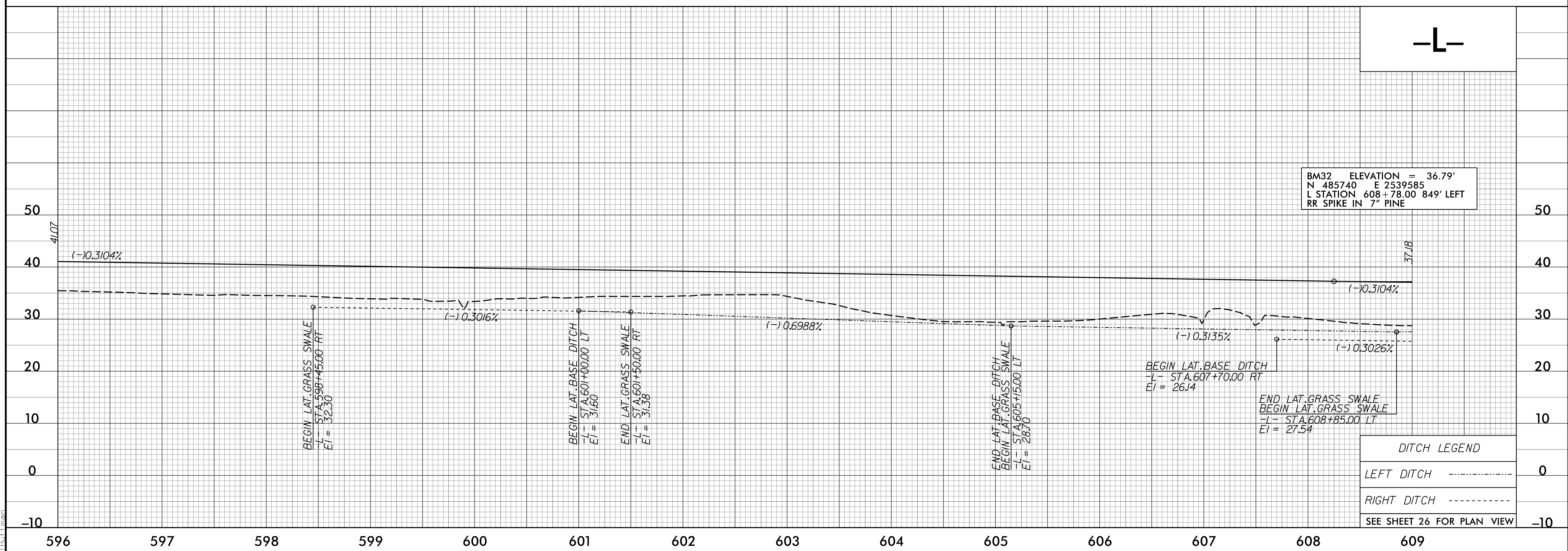
5/28/99

PROJECT REFERENCE NO. R-2514D	SHEET NO. 43
ROADWAY DESIGN ENGINEER DANIEL W. GARDNER, JR. SEAL 033871 3/24/99	HYDRAULICS ENGINEER Lyle Moore SEAL 039745 3/23/99



BM31 ELEVATION = 36.89'
 N 484067 E 2539007
 L STATION 594+70.00 227' RIGHT
 RR SPIKE IN BASE OF TWIN GUM

SEE SHEET 25 FOR PLAN VIEW



BM32 ELEVATION = 36.79'
 N 485740 E 2539585
 L STATION 608+78.00 849' LEFT
 RR SPIKE IN 7" PINE

DITCH LEGEND	
LEFT DITCH	-----
RIGHT DITCH	-----
SEE SHEET 26 FOR PLAN VIEW	

Z:\15\2015\01\Cadd\2514D\Roadway\Proj\2514D_Rdy.plt.dgn