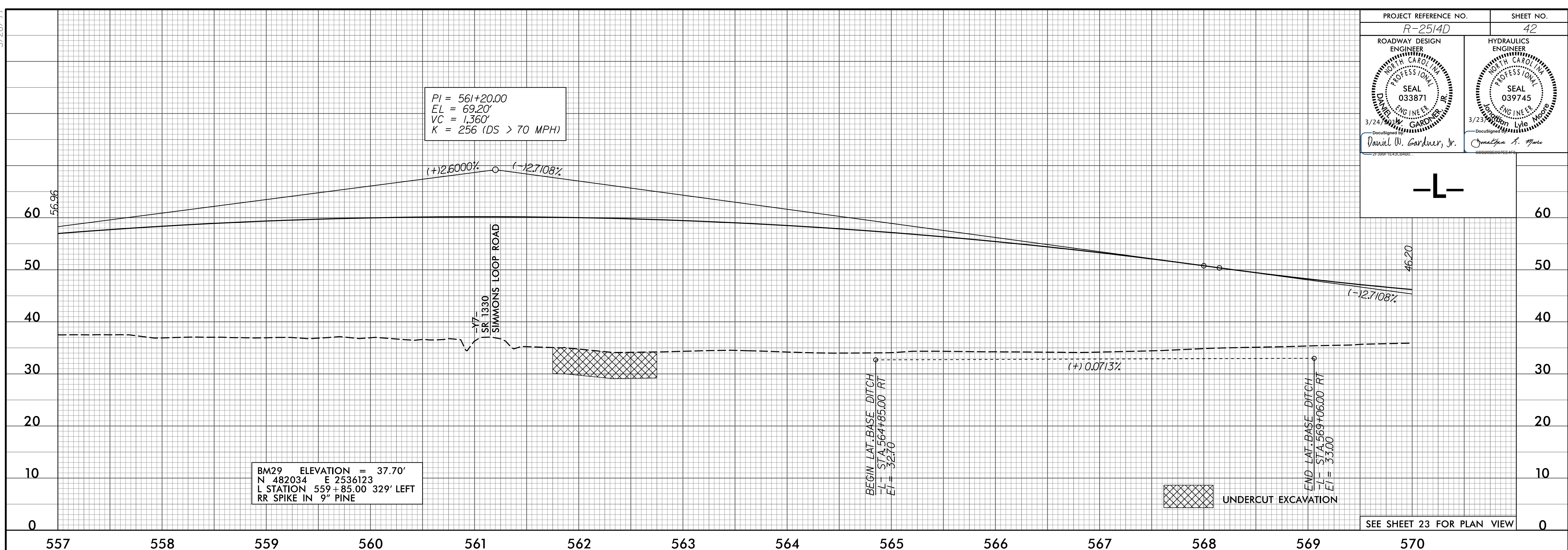


5/28/99

PROJECT REFERENCE NO. R-2514D	SHEET NO. 42
ROADWAY DESIGN ENGINEER DANIEL W. GARDNER, JR. SEAL 033871 3/24/99	HYDRAULICS ENGINEER Lyle Moore SEAL 039745 3/23/99



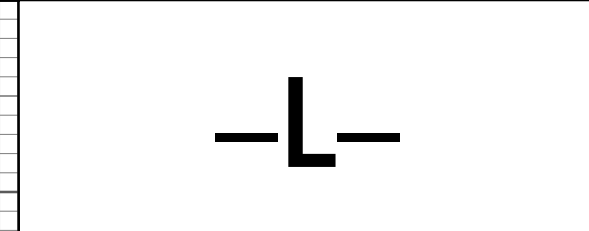
BM29 ELEVATION = 37.70'
 N 482034 E 2536123
 L STATION 559+85.00 329' LEFT
 RR SPIKE IN 9" PINE

PI = 561+20.00
 EL = 69.20'
 VC = 1,360'
 K = 256 (DS > 70 MPH)

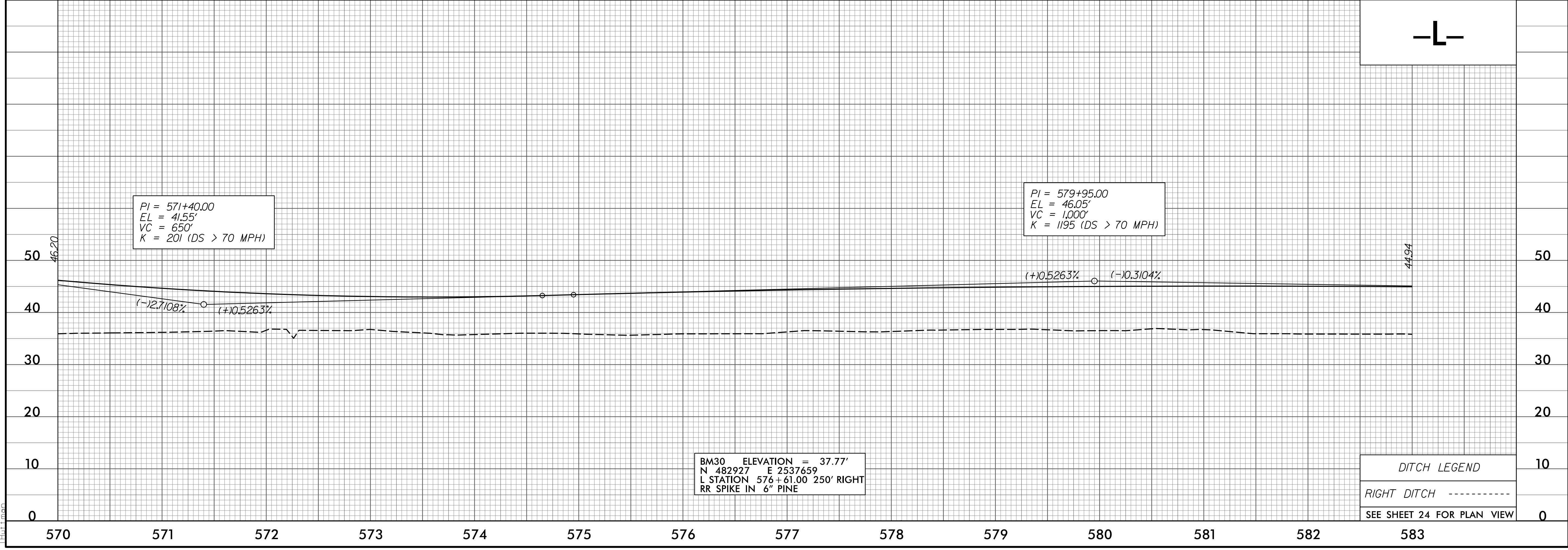
BEGIN LAT-BASE DITCH
 L STATION 564+85.00 RT
 ELEVATION 32.70

END LAT-BASE DITCH
 L STATION 569+06.00 RT
 ELEVATION 33.00

SEE SHEET 23 FOR PLAN VIEW



5/15/2015 10:01 AM C:\cadd\2514D\Roadway\Proj\2514D_Rdy.plt.dgn



PI = 571+40.00
 EL = 41.55'
 VC = 650'
 K = 201 (DS > 70 MPH)

PI = 579+95.00
 EL = 46.05'
 VC = 1,000'
 K = 1195 (DS > 70 MPH)

BM30 ELEVATION = 37.77'
 N 482927 E 2537659
 L STATION 576+61.00 250' RIGHT
 RR SPIKE IN 6" PINE

DITCH LEGEND

RIGHT DITCH - - - - -

SEE SHEET 24 FOR PLAN VIEW