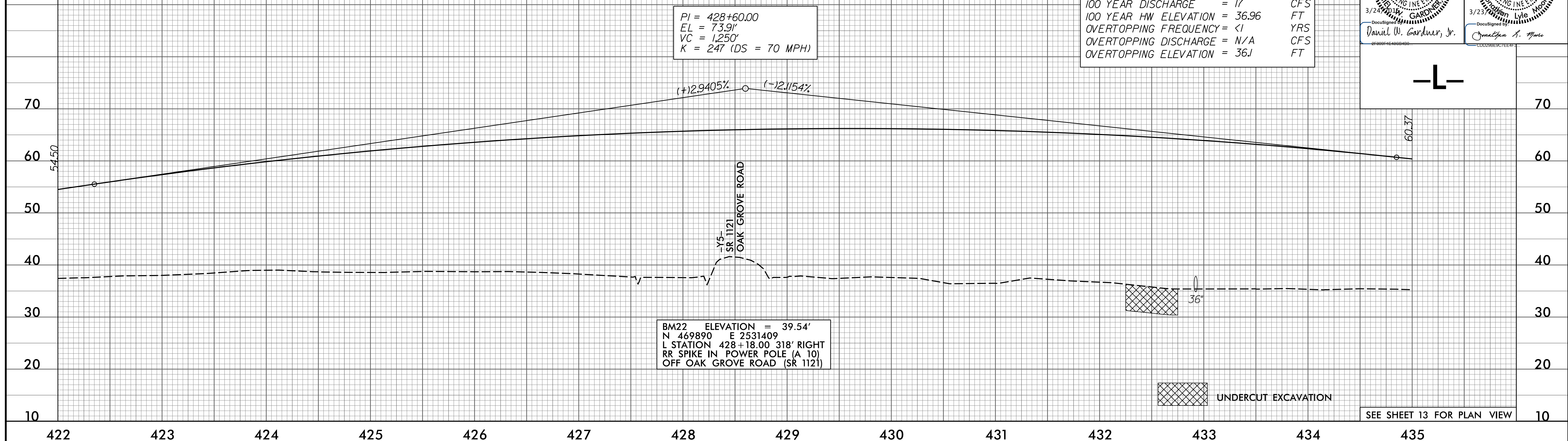


5/28/99

PROJECT REFERENCE NO. R-2514D	SHEET NO. 37
ROADWAY DESIGN ENGINEER DANIEL W. GARDNER, JR. SEAL 033871 3/23/99	HYDRAULICS ENGINEER DANIEL W. GARDNER, JR. SEAL 039745 3/23/99

PIPE HYDRAULIC DATA
DRAINAGE STRUCTURE NO.1305

DRAINAGE AREA = 8 AC
DESIGN FREQUENCY = 50 YRS
DESIGN DISCHARGE = 16 CFS
DESIGN HW ELEVATION = 36.87 FT
100 YEAR DISCHARGE = 17 CFS
100 YEAR HW ELEVATION = 36.96 FT
OVERTOPPING FREQUENCY = <1 YRS
OVERTOPPING DISCHARGE = N/A CFS
OVERTOPPING ELEVATION = 36J FT



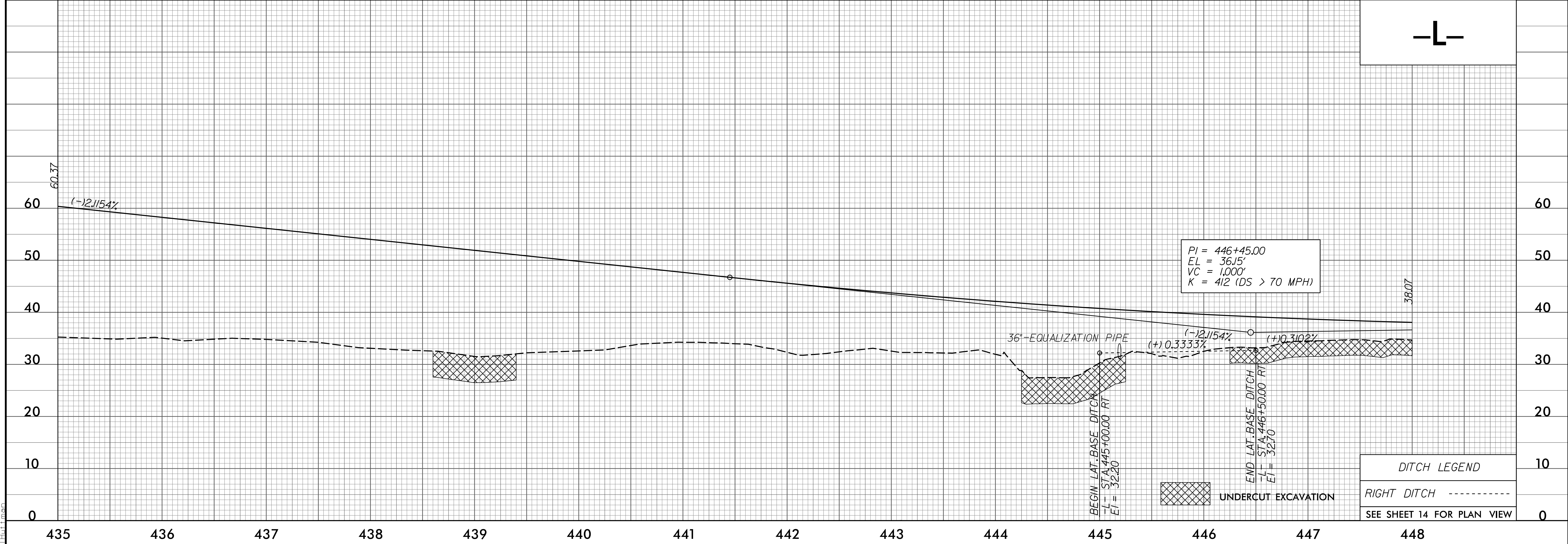
PI = 428+60.00
EL = 73.91'
VC = 1,250'
K = 247 (DS = 70 MPH)

BM22 ELEVATION = 39.54'
N 469890 E 2531409
L STATION 428+18.00 318' RIGHT
RR SPIKE IN POWER POLE (A 10)
OFF OAK GROVE ROAD (SR 1121)

UNDERCUT EXCAVATION

SEE SHEET 13 FOR PLAN VIEW

P:\5\2015\01\Cadd\2514D\Roadway\Proj\2514D_Rdy.plt.dgn



PI = 446+45.00
EL = 36.15'
VC = 1,000'
K = 412 (DS > 70 MPH)

UNDERCUT EXCAVATION

DITCH LEGEND
RIGHT DITCH - - - - -
SEE SHEET 14 FOR PLAN VIEW