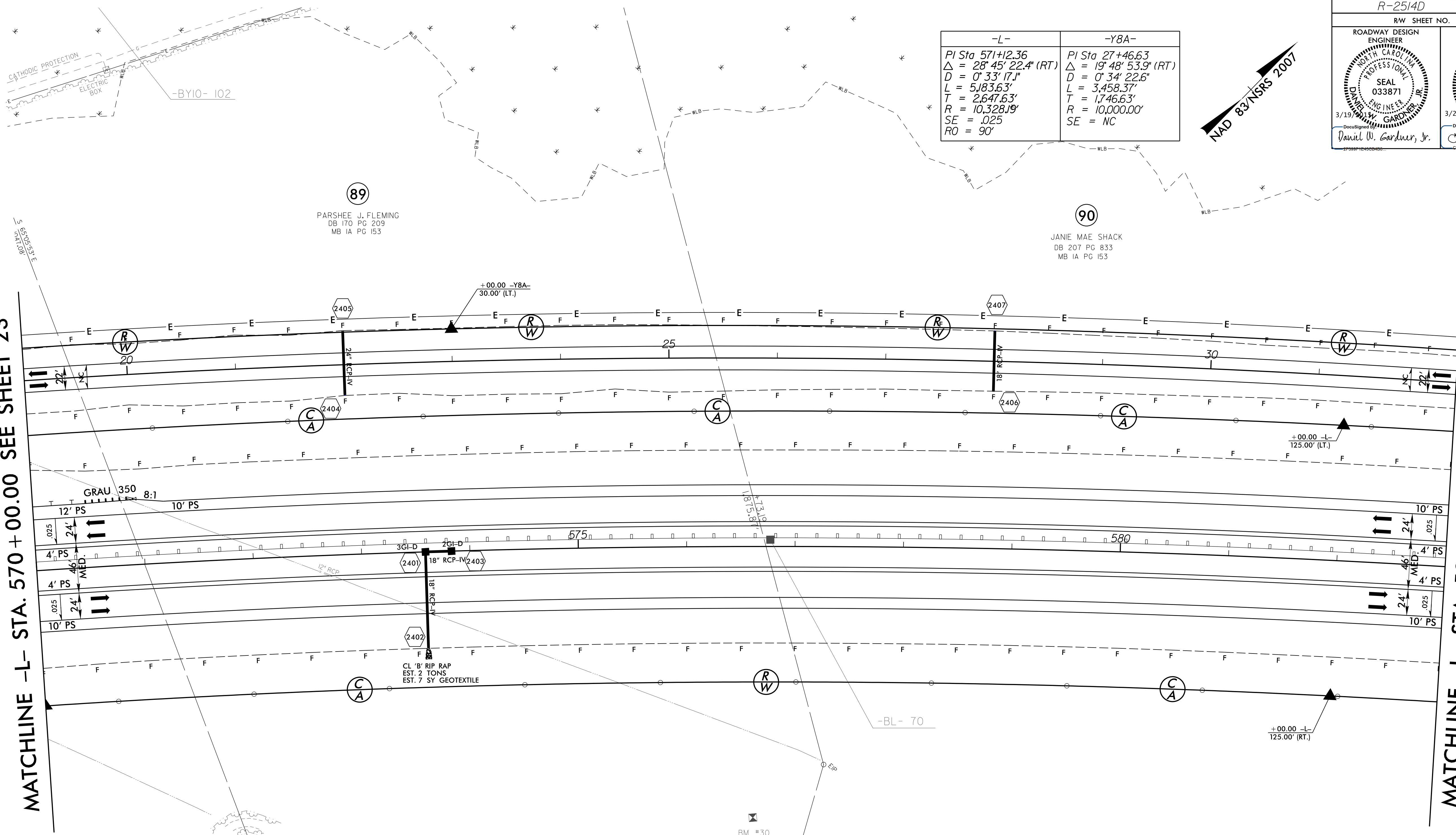
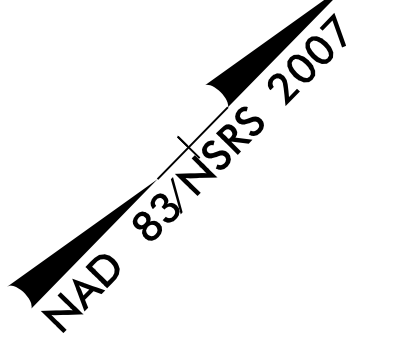


-L-	-Y8A-
PI Sta 571+12.36	PI Sta 27+46.63
$\Delta = 28^\circ 45' 22.4" (RT)$	$\Delta = 19^\circ 48' 53.9" (RT)$
$D = 0^\circ 33' 17.1"$	$D = 0^\circ 34' 22.6"$
$L = 5,183.63'$	$L = 3,458.37'$
$T = 2,647.63'$	$T = 1,746.63'$
$R = 10,328.19'$	$R = 10,000.00'$
$SE = .025$	$SE = NC$
$RO = 90^\circ$	



REVISIONS

3/15/2015  
C:\cadd\2514D\Roadway\Proj\NR2514D\_Roadway\psh\_24.dgn

