

-L-
 PI Sta 571+12.36
 $\Delta = 28' 45" 22.4" (RT)$
 $D = 0' 33' 17.1"$
 $L = 5,183.63'$
 $T = 2,647.63'$
 $R = 10,328.19'$
 $SE = .025$
 $RO = 90'$

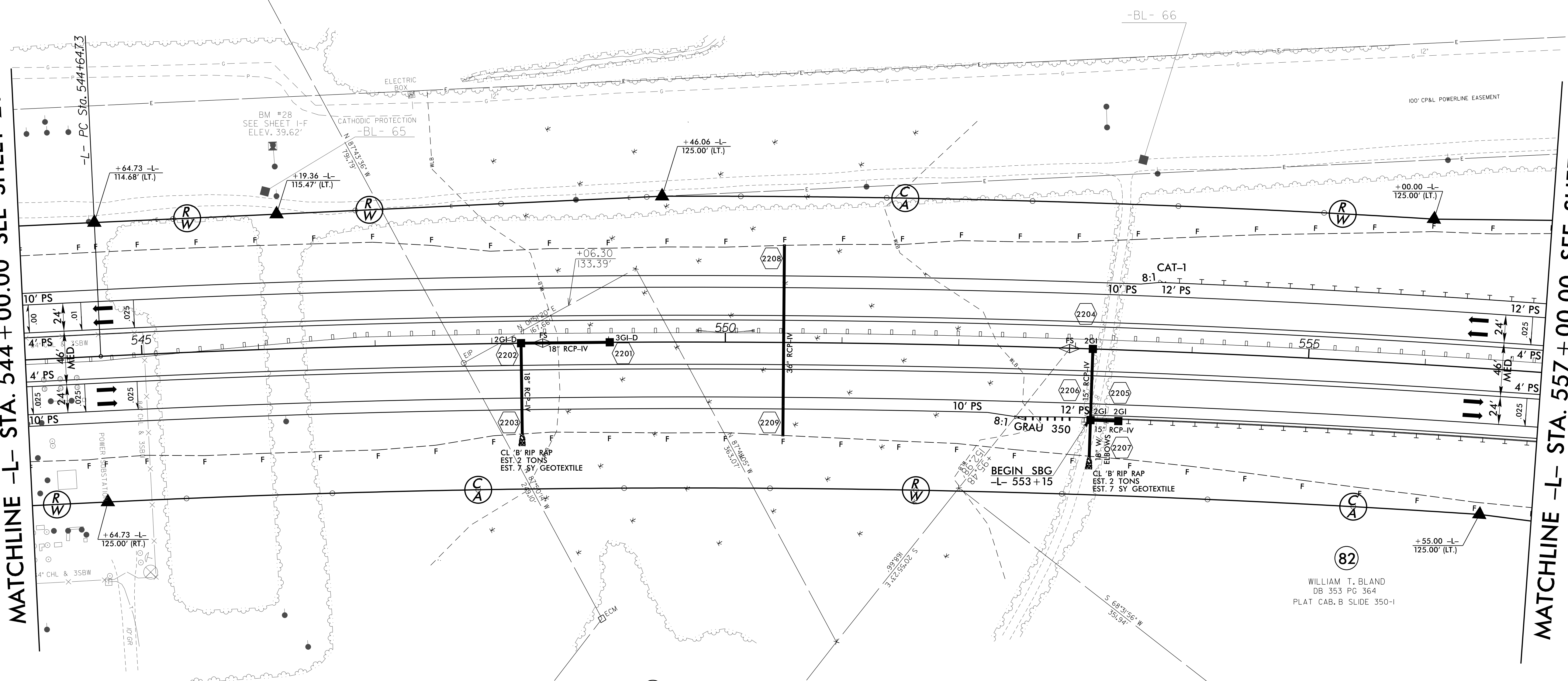
DETAIL 'U'
FALSE SUMP
(Not to Scale)

Ditch Grade	L	Ditch Grade	L
0.0% To 2.0%	20'	Over 4.0% To 6.0%	40'
Over 2.0% To 4.0%	30'	Over 6.0%	50'

82
 WILLIAM T. BLAND
 DB 353 PG 364
 PLAT CAB. B SLIDE 350-1

MATCHLINE -L- STA. 544 + 00.00 SEE SHEET 21

MATCHLINE -L- STA. 557 + 00.00 SEE SHEET 23



80
 PROGRESS ENERGY
 FORMERLY CAROLINA POWER & LIGHT COMPANY
 (RHEMS 230 KV SUBSTATION)
 DB 155 PG 576
 DB 166 PG 210

80
 PROGRESS ENERGY
 FORMERLY CAROLINA POWER & LIGHT COMPANY
 (RHEMS 230 KV SUBSTATION)
 DB 155 PG 576
 DB 166 PG 210

81
 JACKIE W. MIRAYA
 DB 240 PG 479
 MB 13 PG 56

83
 RUTHIE M. BLAND
 DB 193 PG 271

82
 WILLIAM T. BLAND
 DB 353 PG 364
 PLAT CAB. B SLIDE 350-1

REVISIONS

8/17/99
 P:\15\2015\1501\Cadd\2514D\Roadway\Proj\NR2514D_Rdwy_psh_22.dgn
 3/15/2015 10:52:01 AM