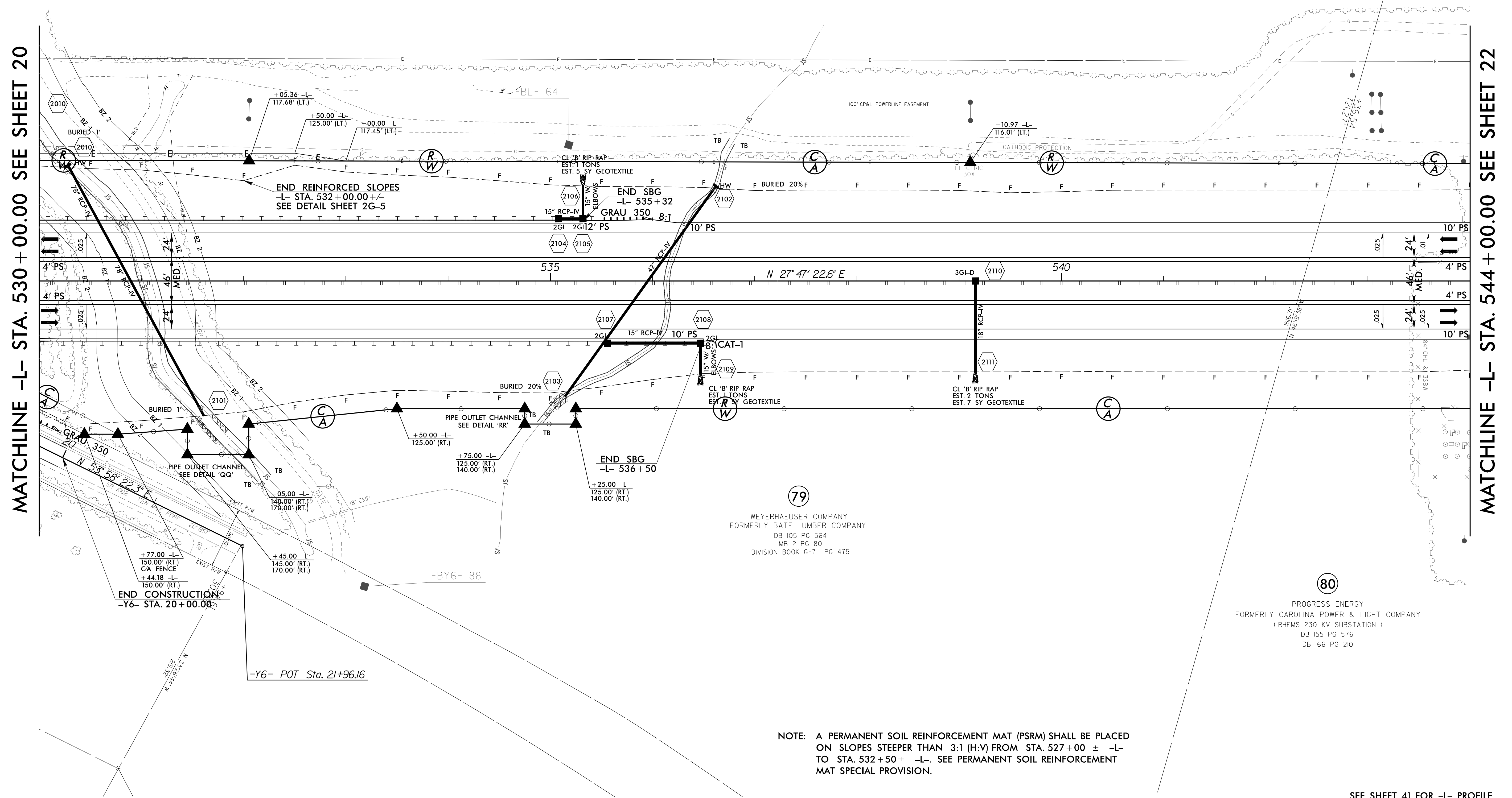


79
WEYERHAEUSER COMPANY
FORMERLY BATE LUMBER COMPANY
DB 105 PG 564
MB 2 PG 80
DIVISION BOOK G-7 PG 475



79
WEYERHAEUSER COMPANY
FORMERLY BATE LUMBER COMPANY
DB 105 PG 564
MB 2 PG 80
DIVISION BOOK G-7 PG 475

80
PROGRESS ENERGY
FORMERLY CAROLINA POWER & LIGHT COMPANY
(RHMS 230 KV SUBSTATION)
DB 155 PG 576
DB 166 PG 210

NOTE: A PERMANENT SOIL REINFORCEMENT MAT (PSRM) SHALL BE PLACED ON SLOPES STEEPER THAN 3:1 (H:V) FROM STA. 527+00 ± -L- TO STA. 532+50 ± -L-. SEE PERMANENT SOIL REINFORCEMENT MAT SPECIAL PROVISION.

SEE SHEET 41 FOR -L- PROFILE SBG - "SHOULDER BERM GUTTER"

REVISIONS

8/17/99
3/15/2015
F:\Projects\2015\01\Cadd\NR2514D\Roadway\Proj\NR2514D_RHy_psh_21.dgn