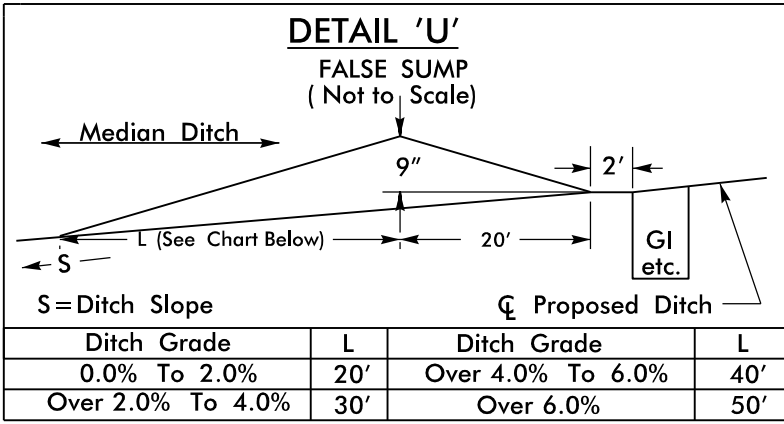
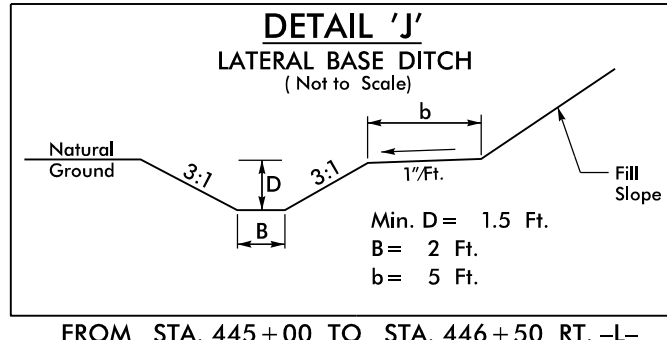
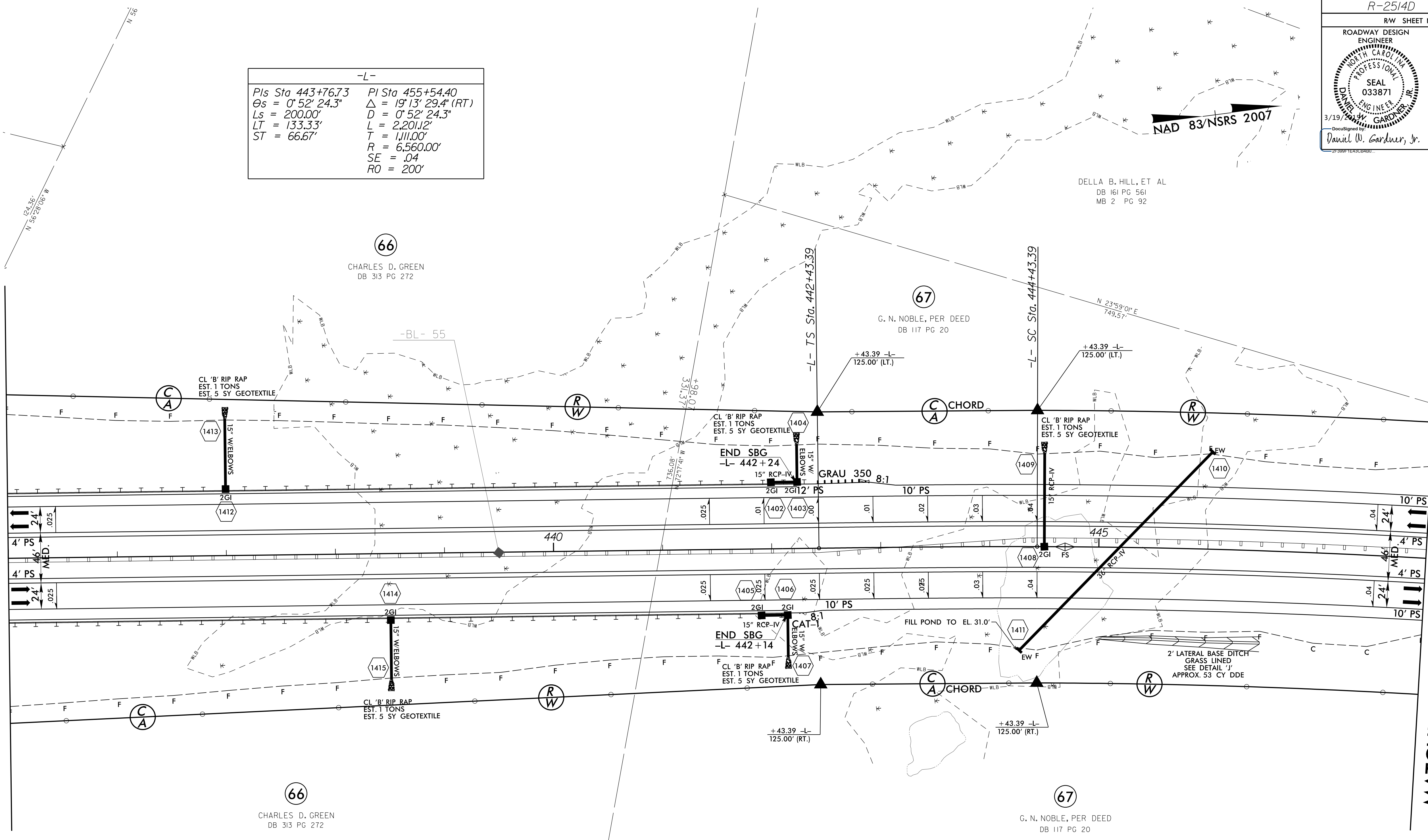


-L-

PI Sta 443+76.73	PI Sta 455+54.40
$\theta_s = 0^\circ 52' 24.3''$	$\Delta = 19^\circ 13' 29.4''$ (RT)
$L_s = 200.00'$	$D = 0^\circ 52' 24.3''$
$LT = 133.33'$	$L = 2,201.12'$
$ST = 66.67'$	$T = 1,111.00'$
	$R = 6,560.00'$
	$SE = .04$
	$RO = 200'$

MATCHLINE -L- STA. 435 + 00.00 SEE SHEET 13

MATCHLINE -L- STA. 448 + 00.00 SEE SHEET 15



REVISIONS

8/17/99  
3/15/2015  
P:\2514D\Roadway\Proj\NR2514D\_BBH.psh\_14.dgn