

PROJECT REFERENCE NO. R-2514D		SHEET NO. 12	
RW SHEET NO.		HYDRAULICS ENGINEER	
ROADWAY DESIGN ENGINEER		SEAL 039745	
Daniel W. Gardner, Jr.		Matthew Kyle Moore	

NAD 83/NSRS 2007

NATHANIEL SIMMONS HEIRS
C/O KATHERINE S. WAY
DB 153 PG 44

HERMAN C. SIMMONS
DB 212 PG 140

HERMAN C. SIMMONS
DB 212 PG 140

58
VELMA J. BRYAN, ET AL
DB 291 PG 186
TRACT TWO

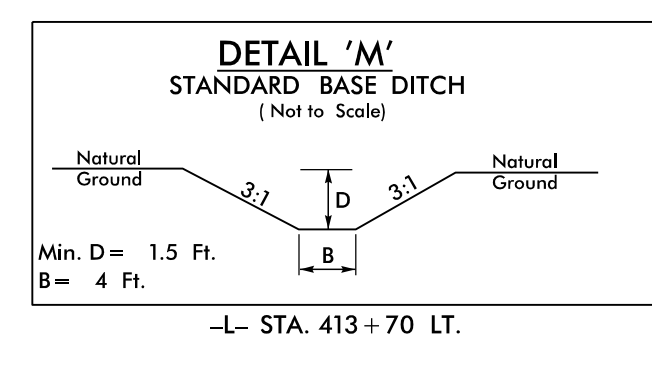
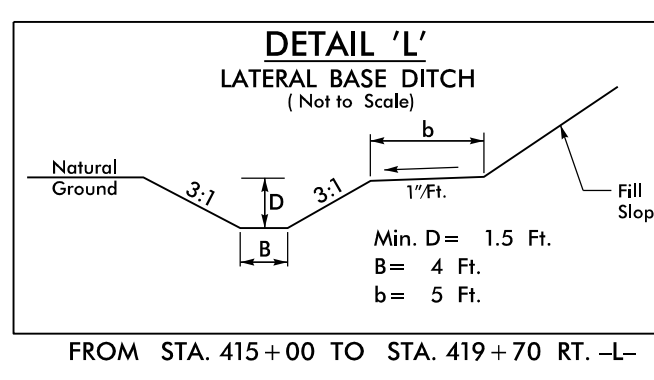
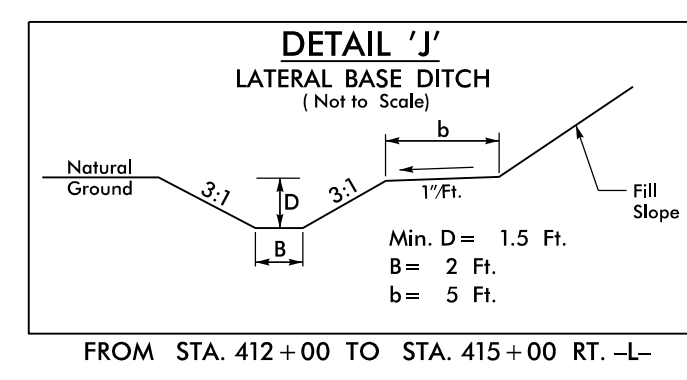
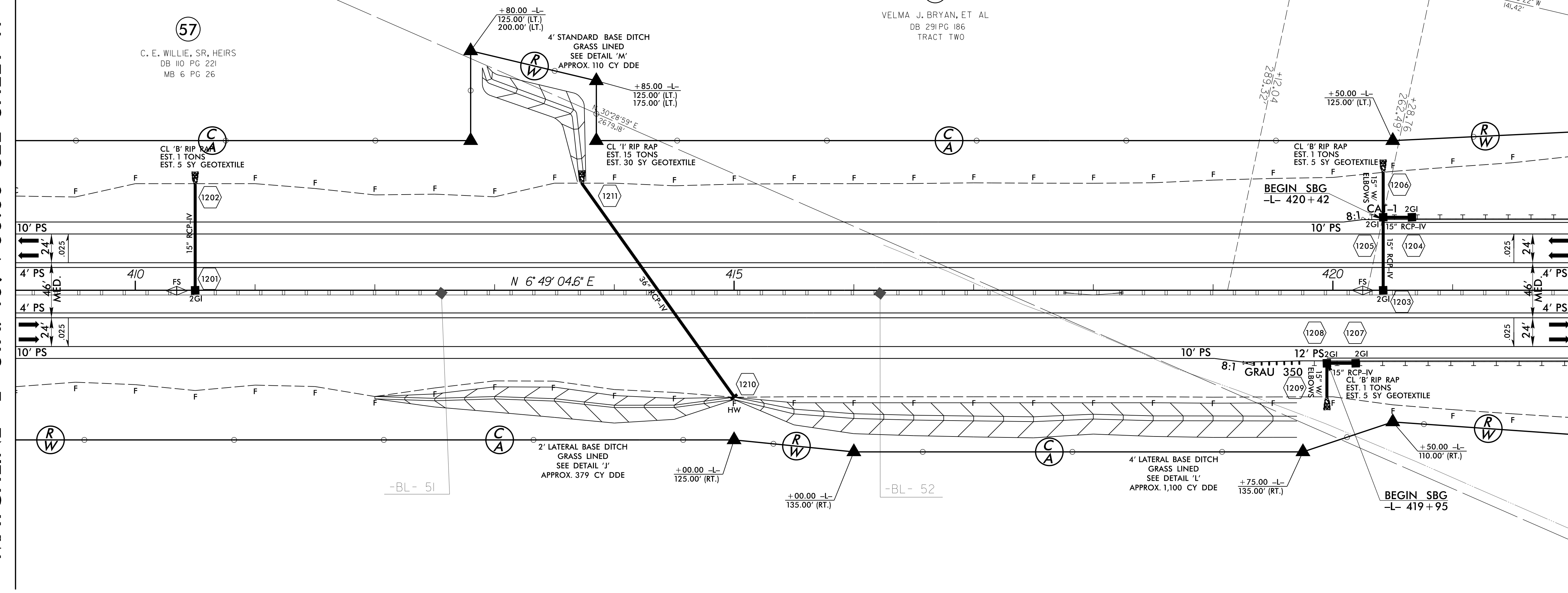
57
C. E. WILLIE, SR, HEIRS
DB 110 PG 221
MB 6 PG 26

57
C. E. WILLIE, SR, HEIRS
DB 110 PG 221
MB 6 PG 26

KATIE BROWN
DB 172 PG 899

MATCHLINE -L- STA. 409 + 00.00 SEE SHEET 11

MATCHLINE -L- STA. 422 + 00.00 SEE SHEET 13



SEE SHEET 36 FOR -L- PROFILE

REVISIONS

8/17/99
 3/15/2015
 P:\2514D\Roadway\Proj\NR2514D_Roadway\psh_12.dgn
 12:11:11 PM