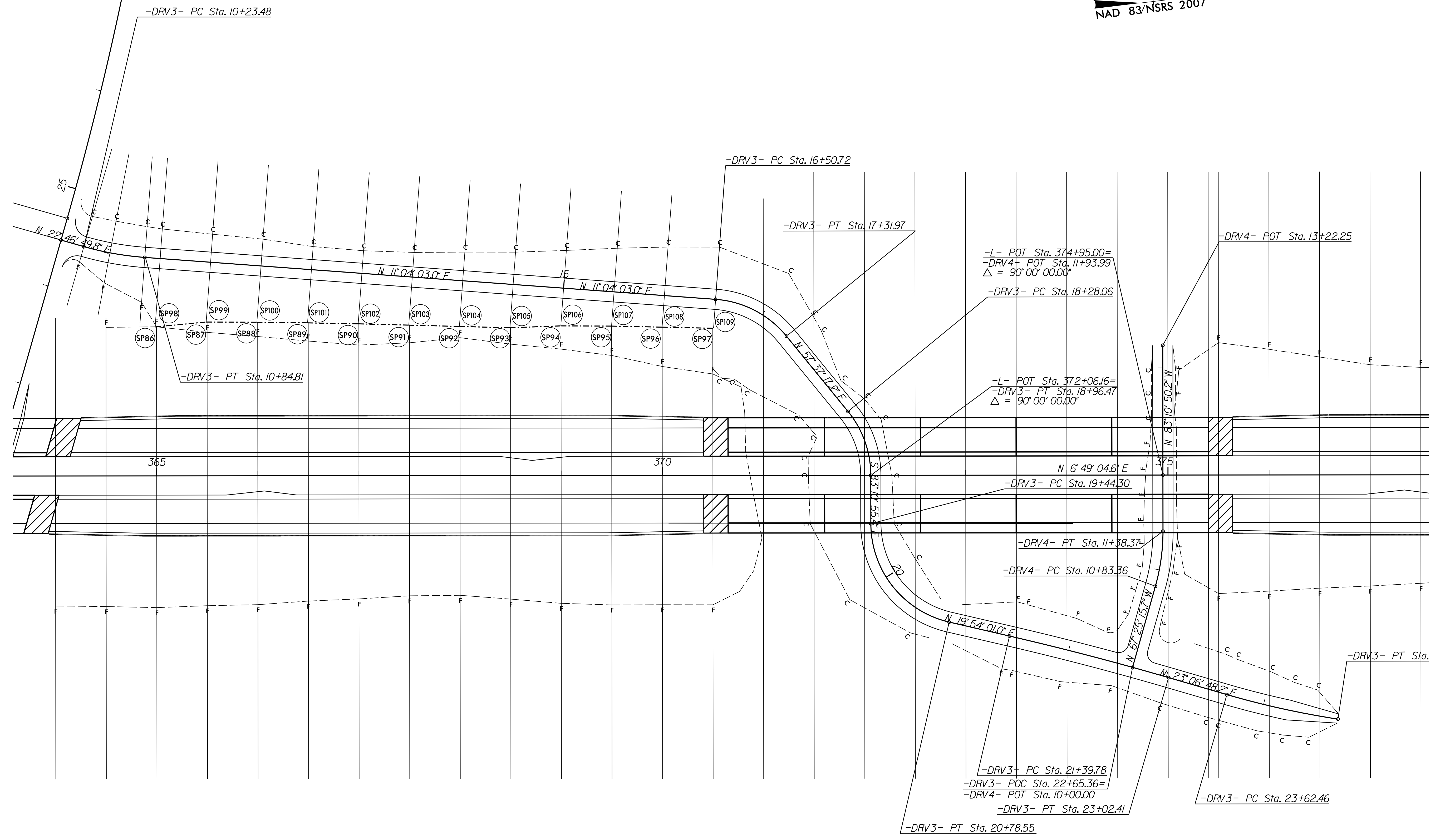


NAD 83/NSRS 2007



REVISIONS

8/17/99
 P:\1\205-01\Cadd\2514D\Roadway\Proj\2514D_Roadway\2B-3.dgn
 P:\1\205-01\Cadd\2514D\Roadway\Proj\2514D_Roadway\2B-3.dgn
 11/11/05

-DRV3-					-DRV4-	
PI Sta 16+93.74	PI Sta 18+63.66	PI Sta 20+23.73	PI Sta 22+21.2	PI Sta 24+18.81	PI Sta 11+11.04	
$\Delta = 46^\circ 33' 14.2''$ (RT)	$\Delta = 39^\circ 11' 47.4''$ (RT)	$\Delta = 76^\circ 55' 03.6''$ (LT)	$\Delta = 3^\circ 12' 47.2''$ (RT)	$\Delta = 7^\circ 35' 08.3''$ (LT)	$\Delta = 15^\circ 45' 34.5''$ (LT)	
D = 57' 17" 44.8"	D = 57' 17" 44.8"	D = 57' 17" 44.8"	D = 1' 58" 32.6"	D = 6' 44" 26.4"	D = 28' 38" 52.4"	
L = 81.25'	L = 68.4'	L = 134.25'	L = 162.63'	L = 112.54'	L = 55.01'	
T = 43.02'	T = 35.60'	T = 79.43'	T = 81.34'	T = 56.35'	T = 27.68'	
R = 100.00'	R = 100.00'	R = 100.00'	R = 2,900.00'	R = 850.00'	R = 200.00'	