

8/17/99

V&M
Vaughn & Melton
 Consulting Engineers

Asheville, North Carolina
 828-253-2795

Charlotte, North Carolina
 704-357-0488

Tri-Cities, Tennessee
 423-467-8400

Knoxville, Tennessee
 865-546-5800

Middlesboro, Kentucky
 606-248-6600

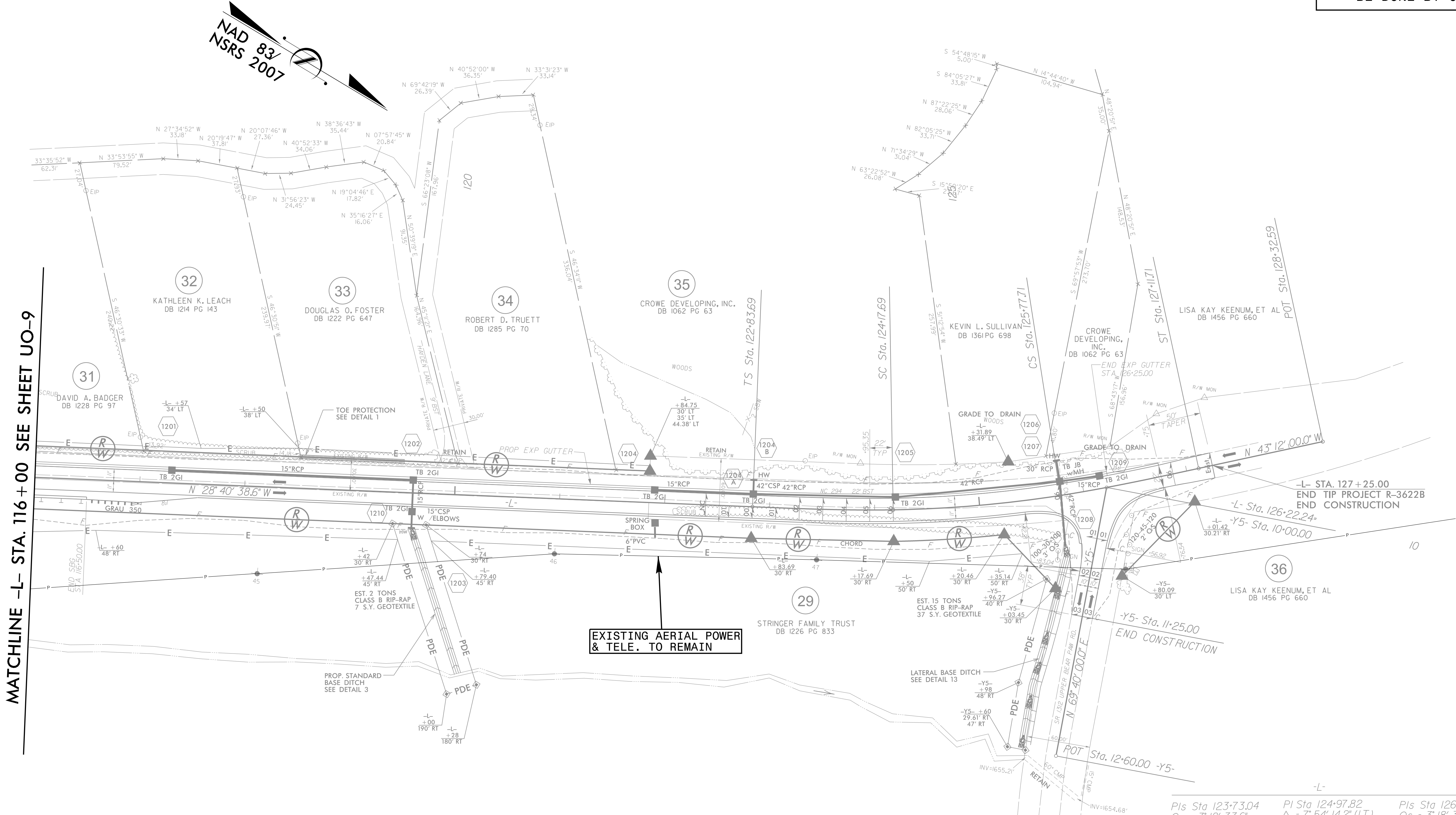
Spartanburg, South Carolina
 864-574-4775

Copyright © 1994 Vaughn & Melton, Inc.
 All Rights Reserved

| | |
|-----------------------|-----------|
| PROJECT REFERENCE NO. | SHEET NO. |
| R-3622B | UO-10 |

UTILITIES BY OTHERS

NOTE:
 ALL PROPOSED UTILITY WORK
 SHOWN ON THIS SHEET WILL
 BE DONE BY OTHERS



MATCHLINE -L- STA. 116 + 00 SEE SHEET UO-9

EXISTING AERIAL POWER & TELE. TO REMAIN

| | | |
|--|---|--|
| Pls Sta 123+73.04 $\Theta s = 3' 18" 33.6"$ $Ls = 134.00'$ $LT = 89.35'$ $ST = 44.68'$ | Pls Sta 124+97.82 $\Delta = 7' 54" 14.2" (LT)$ $D = 4' 56" 21.4"$ $L = 160.02'$ $T = 80.14'$ $R = 1,160.00'$ | Pls Sta 126+22.39 $\Theta s = 3' 18" 33.6"$ $Ls = 134.00'$ $LT = 89.35'$ $ST = 44.68'$ |
|--|---|--|

SEE SHEET 21 FOR -L- PROFILE
 SEE SHEET 22 FOR -Y5- PROFILE

\$\$\$\$\$SYTIME\$\$\$\$\$
 \$\$\$SERNAME\$\$\$