

UTILITIES BY OTHERS

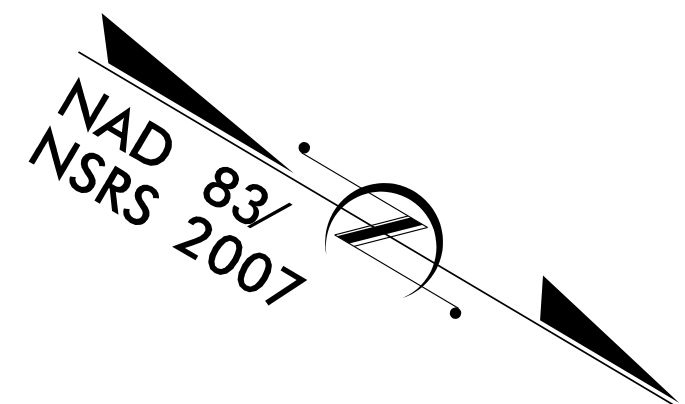
NOTE:
ALL PROPOSED UTILITY WORK
SHOWN ON THIS SHEET WILL
BE DONE BY OTHERS

V&M
Vaughn & Melton
Consulting Engineers

Charlotte, North Carolina 704-357-0488
Tri-Cities, Tennessee 423-467-8400
Knoxville, Tennessee 865-546-5800
Middlesboro, Kentucky 606-248-6600
Spartanburg, South Carolina 864-574-4775

Asheville, North Carolina 828-253-2796

Copyright © 1994 Vaughn & Melton, Inc. All Rights Reserved



EXISTING POLE AND EXISTING O/H POWER & TELEPHONE TO REMAIN

PROPOSED JOINT USE POLE TO REPLACE EXISTING POLE (TO BE SET BY BRMEMC)

PROPOSED JOINT USE POLE (TO BE SET BY BRMEMC)

PROPOSED JOINT USE POLE (TO BE SET BY BRMEMC)

EXISTING JOINT USE POLE TO BE REMOVED

PROPOSED JOINT USE POLE (TO BE SET BY BRMEMC)

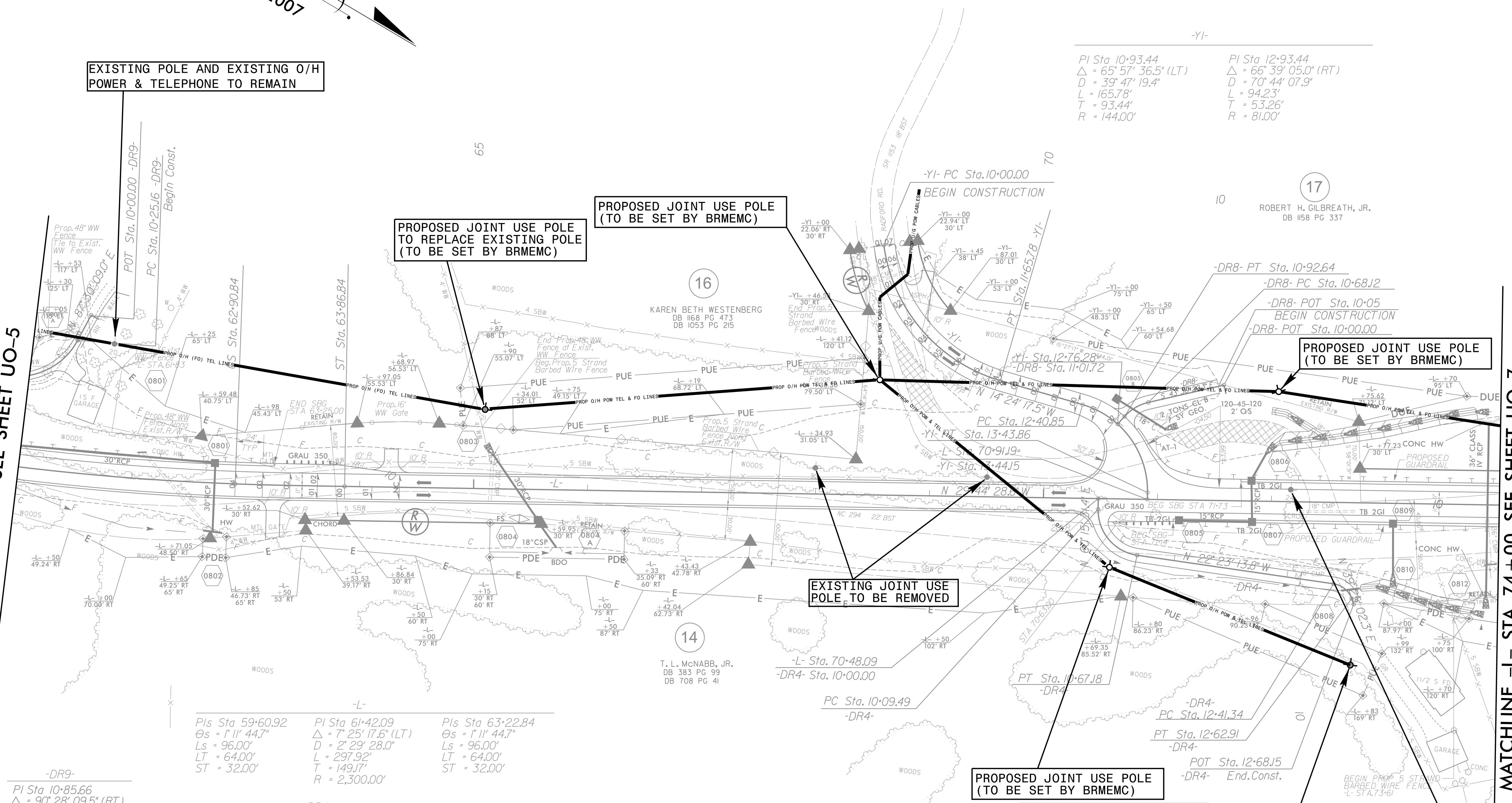
PROPOSED JOINT USE POLE TO REPLACE EXISTING POLE (TO BE SET BY BRMEMC)

EXISTING JOINT USE POLE TO BE REMOVED

EXIST PAVING TO BE REMOVED

MATCHLINE -L- STA. 61+00 SEE SHEET UO-5

MATCHLINE -L- STA. 74+00 SEE SHEET UO-7



-Y1-
PI Sta 10+93.44 Δ = 65° 57' 36.5" (LT) D = 39' 47' 19.4" L = 165.78' T = 93.44' R = 144.00'
PI Sta 12+93.44 Δ = 66° 39' 05.0" (RT) D = 70' 44' 07.9" L = 94.23' T = 53.26' R = 81.00'

-L-
PIs Sta 59+60.92 Δs = 1° 11' 44.7" Ls = 96.00' LT = 64.00' ST = 32.00'
PI Sta 61+42.09 Δ = 7° 25' 17.6" (LT) D = 2' 29' 28.0" L = 297.92' T = 149.17' R = 2,300.00'
PIs Sta 63+22.84 Δs = 1° 11' 44.7" Ls = 96.00' LT = 64.00' ST = 32.00'

-DR4-
PI Sta 10+44.66 Δ = 82° 38' 45.3" (LT) D = 143' 14' 22.0" L = 57.70' T = 35.17' R = 40.00'
PI Sta 12+53.31 Δ = 61° 48' 16.1" (RT) D = 286' 28' 44.0" L = 21.57' T = 11.97' R = 20.00'

-DR8-
PI Sta 10+80.78 Δ = 35° 07' 06.9" (LT) D = 143' 14' 22.0" L = 24.52' T = 12.66' R = 40.00'

-DR9-
PI Sta 10+85.66 Δ = 90° 28' 09.5" (RT) D = 95' 29' 34.7" L = 94.74' T = 60.49' R = 60.00'

8/17/99

\$\$\$\$\$SYTIME\$\$\$\$\$
\$\$\$\$\$SERNAME\$\$\$\$\$