

8/17/99

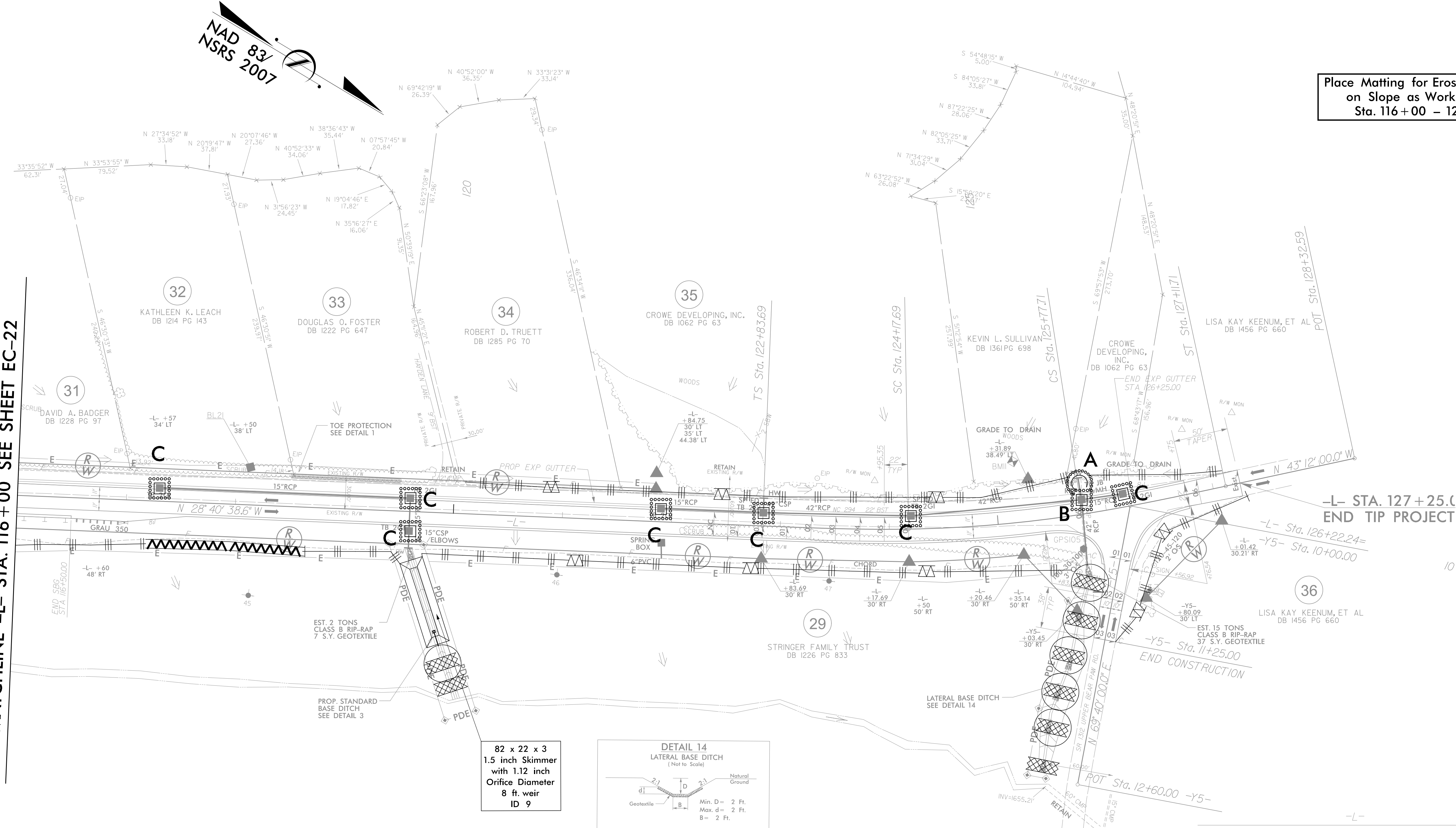
PROJECT REFERENCE NO.	SHEET NO.
R-3622B	EC-23/CONST 14
RW SHEET NO.	
ROADWAY DESIGN ENGINEER	HYDRAULICS ENGINEER

Charlotte, North Carolina 704-357-0488  
 Tri-Cities, Tennessee 423-481-9481  
 Knoxville, Tennessee 865-546-5800  
 Middlesboro, Kentucky 606-248-6600  
 Spartanburg, South Carolina 864-574-4775

Asheville, North Carolina  
 828-253-2796

Copyright © 1994 Vaughn & Melton, Inc. All Rights Reserved

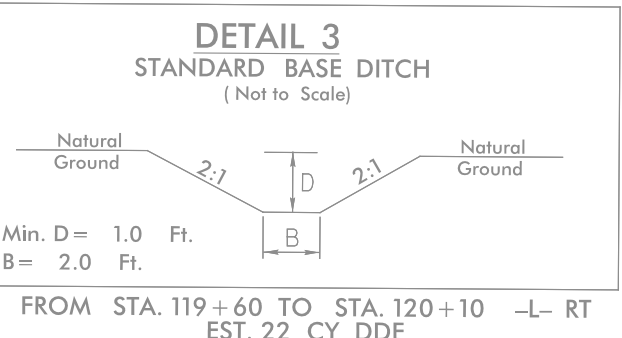
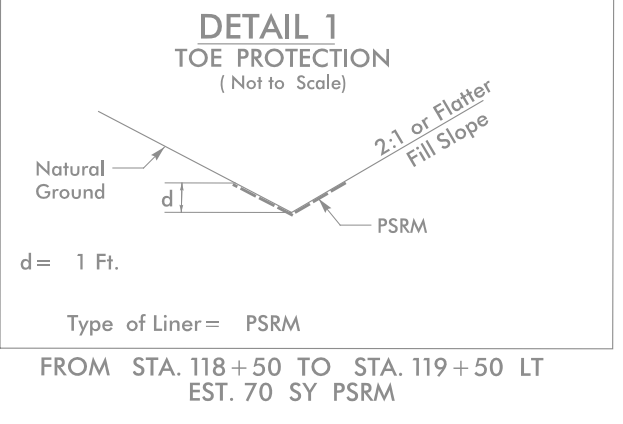
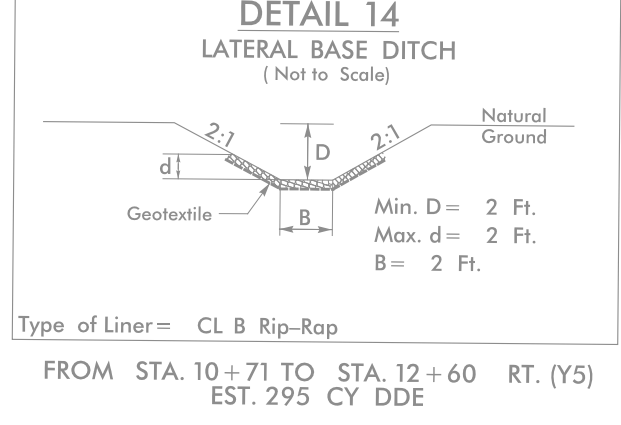
**Place Matting for Erosion Control  
on Slope as Work Allows.  
Sta. 116+00 - 127+25**



**MATCHLINE -L- STA. 116+00 SEE SHEET EC-22**

Pis Sta 123+73.04 θs = 3°18' 33.6" Ls = 134.00' LT = 89.35' ST = 44.68'	Pi Sta 124+97.82 Δ = 7°54' 14.2" (LT) D = 4°56' 21.4" L = 160.02' T = 801.4' R = 1,160.00'	Pis Sta 126+22.24 θs = 3°18' 33.3" Ls = 134.00' LT = 89.35' ST = 44.68'
---	---	---

**82 x 22 x 3  
1.5 inch Skimmer  
with 1.12 inch  
Orifice Diameter  
8 ft. weir  
ID 9**



1. ADDED R/E (3-14-2013)

SEE SHEET 21 FOR -L- PROFILE  
 SEE SHEET 22 FOR -Y5- PROFILE