

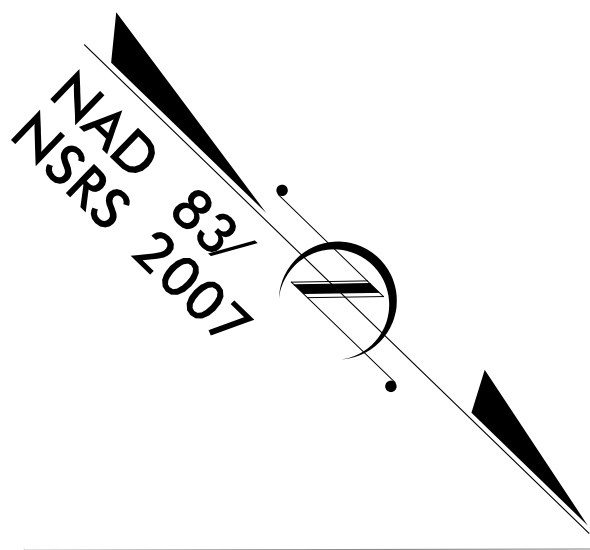
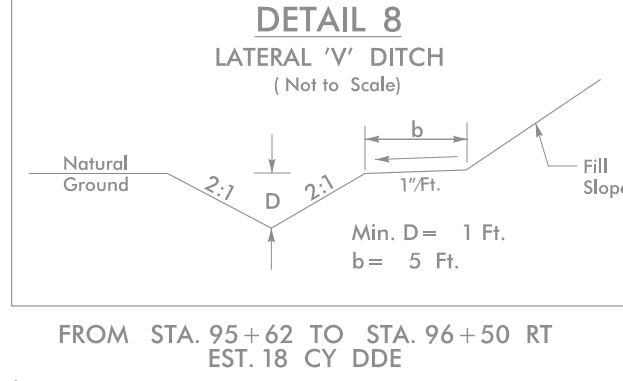
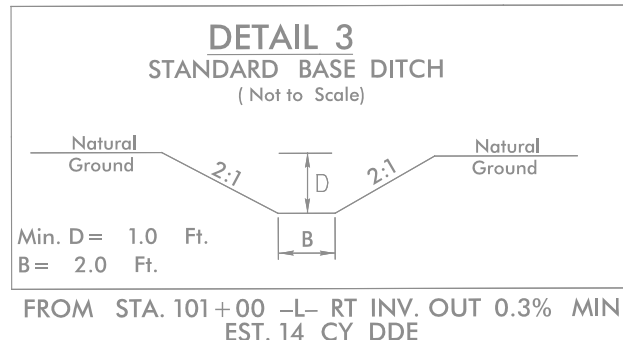
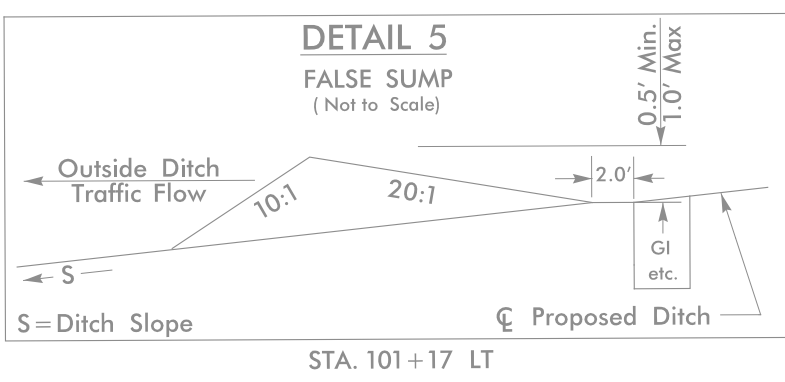
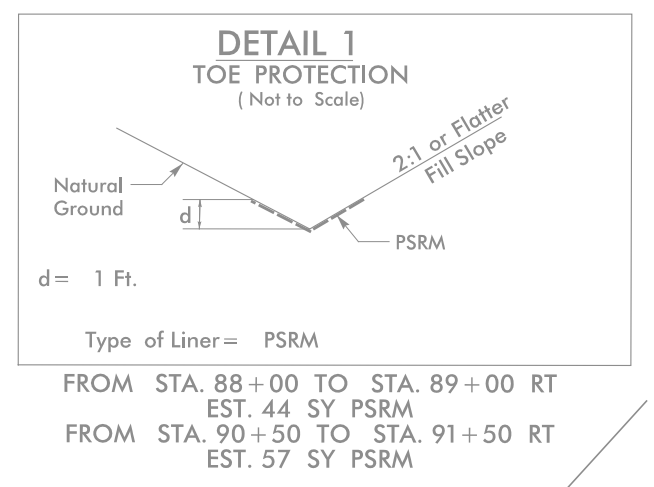
8/17/99

**V&M**  
Vaughn & Melton  
Consulting Engineers

Charlotte, North Carolina 704-357-0488  
Tri-Cities, Tennessee 423-467-8401  
Knoxville, Tennessee 865-546-8800  
Middlesboro, Kentucky 606-248-8600  
Asheville, North Carolina 828-253-2796  
Spartanburg, South Carolina 864-574-4775

Copyright © 1994 Vaughn & Melton, Inc. All Rights Reserved.

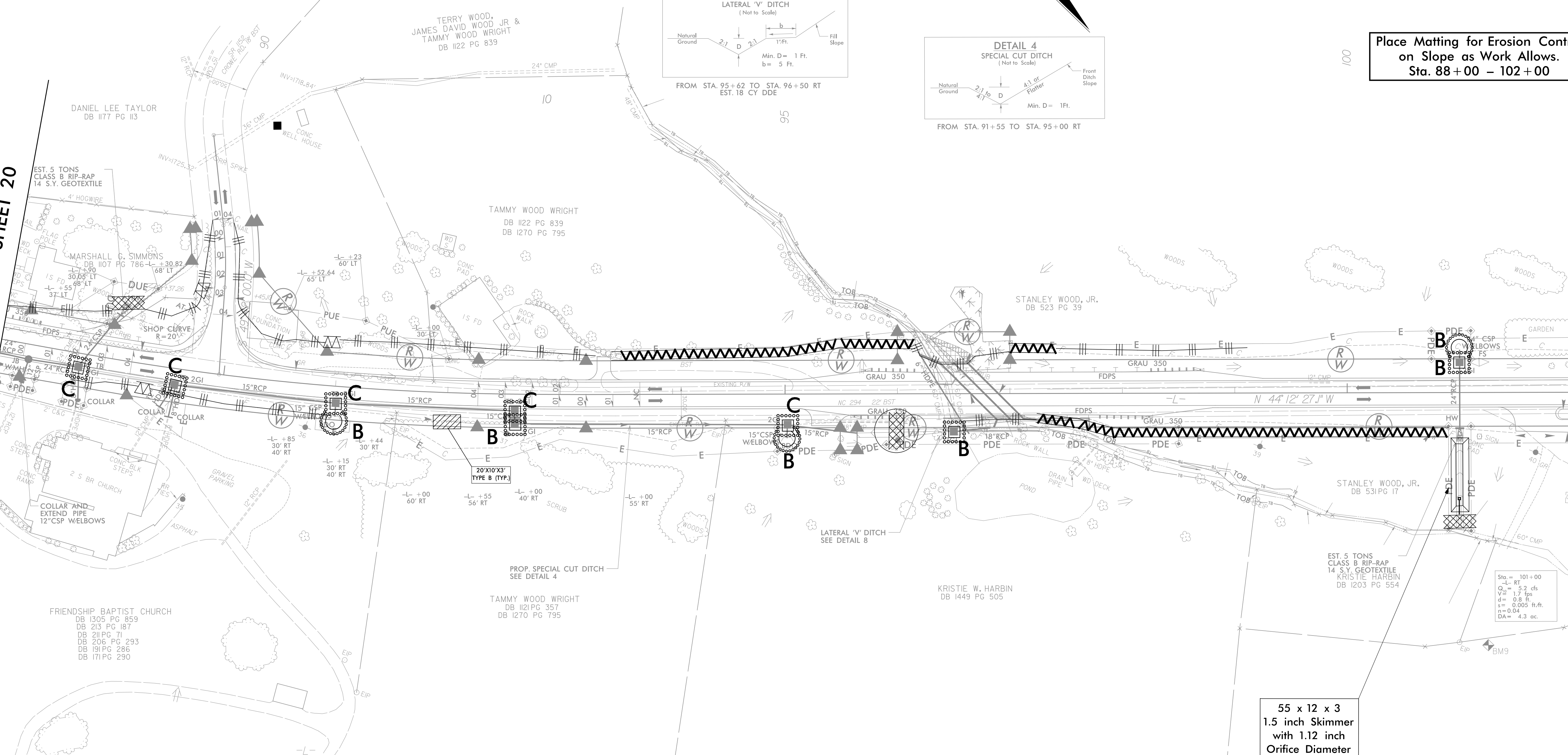
PROJECT REFERENCE NO. R-3622B	SHEET NO. EC-21/CONST.10
ROADWAY DESIGN ENGINEER	HYDRAULICS ENGINEER



Place Matting for Erosion Control on Slope as Work Allows. Sta. 88+00 - 102+00

MATCHLINE -L- STA. 88+00 SEE SHEET 20

MATCHLINE -L- STA. 102+00 SEE SHEET 22



Pls Sta 88+85.47 Os = 1' 11" 44.7" Ls = 96.00' LT = 64.00' ST = 32.00'	Pls Sta 90+72.41 Δ = 7' 42" 28.8" (LT) D = 2' 29" 28.0" L = 309.42' T = 154.94' R = 2,300.00'	Pls Sta 92+58.89 Os = 1' 11" 44.7" Ls = 96.00' LT = 64.00' ST = 32.00'
-Y4-		
Pls Sta 11+08.44 Δ = 9' 57" 00.0" (RT) D = 18' 00" 00.0" L = 55.28' T = 27.71' R = 318.31'		

55 x 12 x 3  
1.5 inch Skimmer  
with 1.12 inch  
Orifice Diameter  
13 ft. weir  
ID 8.

EXIST PAVING TO BE REMOVED

SEE SHEET 19 FOR -L- PROFILE  
SEE SHEET 22 FOR -Y4- PROFILE

1. ADDED PUE (3-14-2013)