

8/17/99

V&M
Vaughn & Melton
 Consulting Engineers

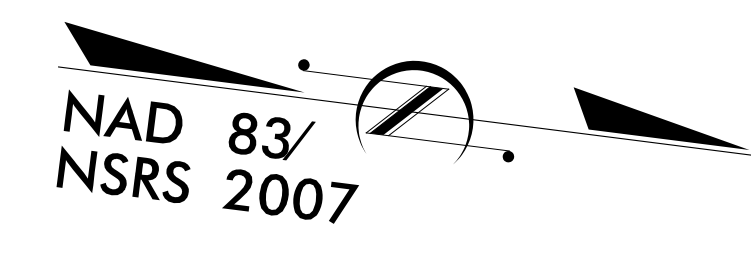
Charlotte, North Carolina 704-357-0488
 Tri-Cities, Tennessee 423-467-8401
 Knoxville, Tennessee 865-546-4800
 Middlesboro, Kentucky 606-248-4600
 Spartanburg, South Carolina 864-574-4775

Asheville, North Carolina 828-253-2796

Copyright © 1994 Vaughn & Melton, Inc. All Rights Reserved.

PROJECT REFERENCE NO. R-3622B	SHEET NO. EC-17/CONST.6
ROADWAY DESIGN ENGINEER	HYDRAULICS ENGINEER

Place Matting for Erosion Control
 on Slope as Work Allows.
 Sta. 34+00 - 48+00

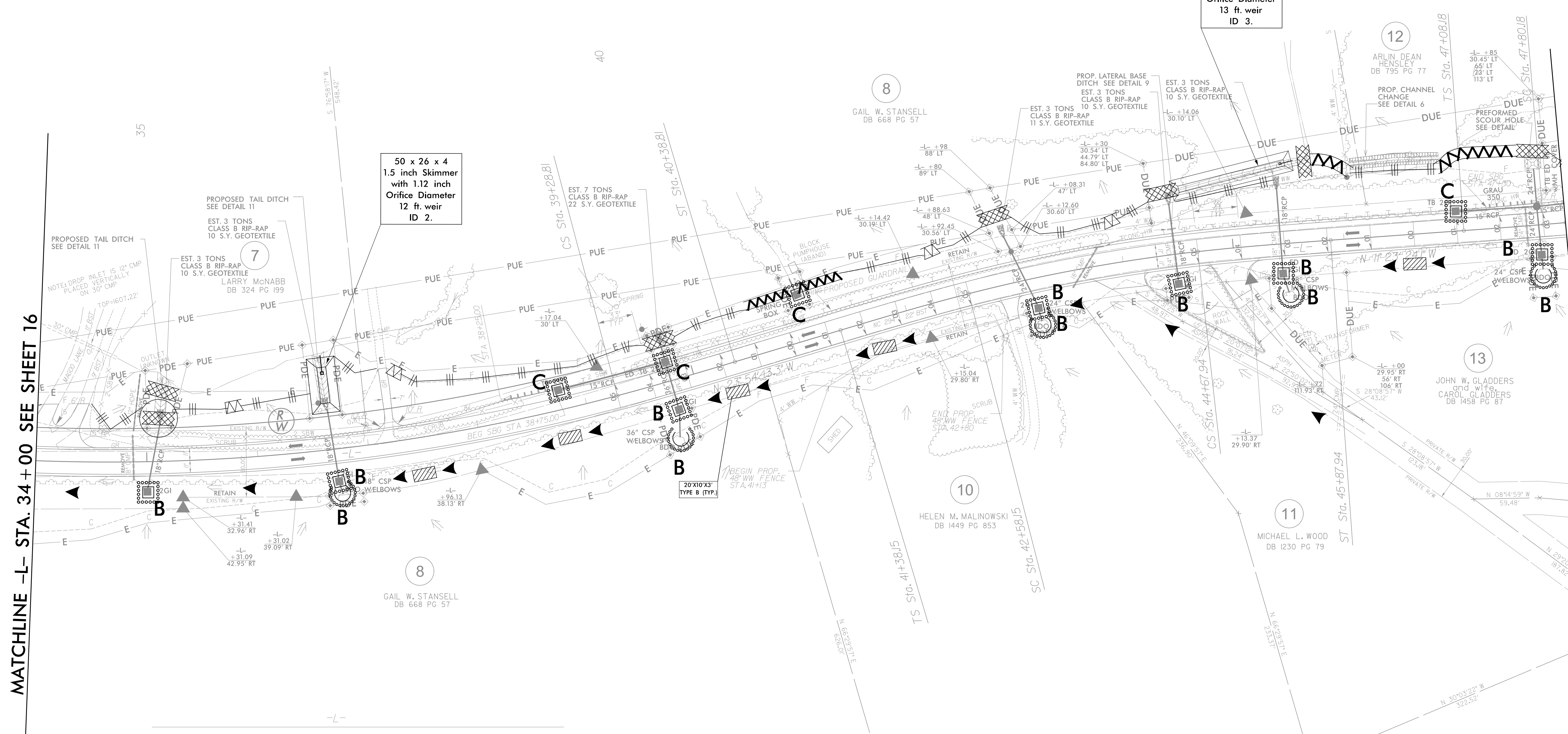


110 x 20 x 3
 1.5 inch Skimmer
 with 1.12 inch
 Orifice Diameter
 13 ft. weir
 ID 3.

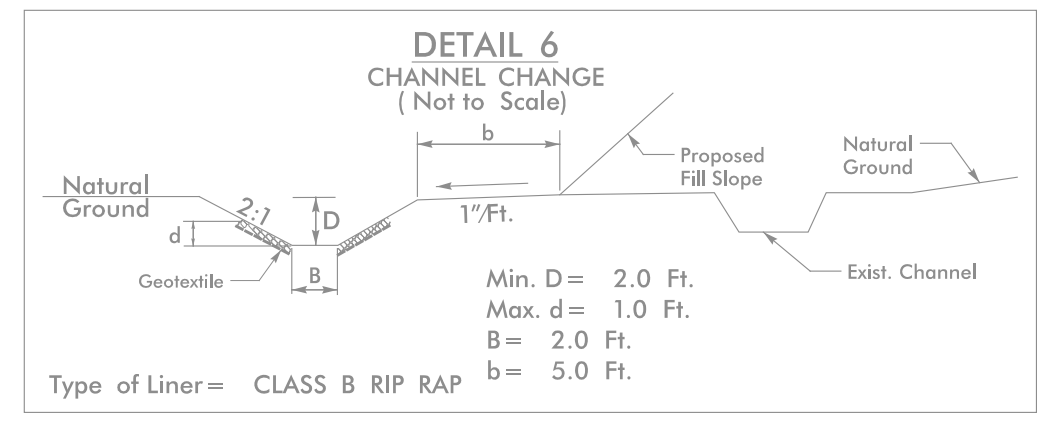
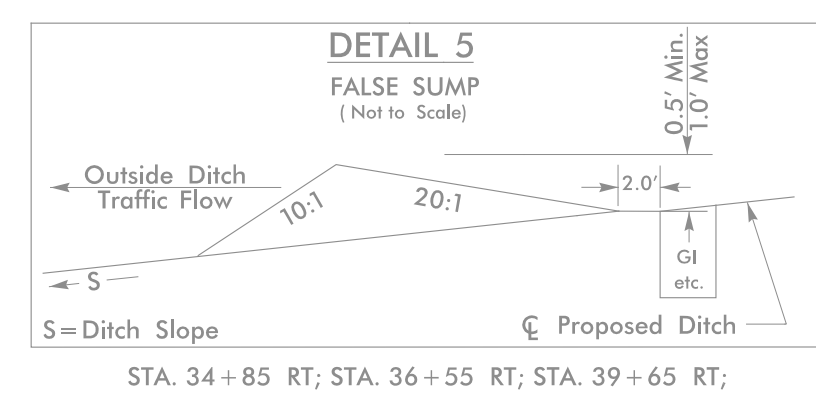
50 x 26 x 4
 1.5 inch Skimmer
 with 1.12 inch
 Orifice Diameter
 12 ft. weir
 ID 2.

MATCHLINE -L- STA. 34+00 SEE SHEET 16

MATCHLINE -L- STA. 48+00 SEE SHEET 18



Pls Sta 31+03.64 Θs = 1° 46' 13.4" Ls = 110.00' LT = 73.34' T = 400.83' ST = 36.67'	Pls Sta 35+41.13 Δ = 25° 22' 50.9" (LT) D = 3' 13' 07.9" L = 788.50' T = 105.06' R = 1,780.00'	Pls Sta 39+65.48 Θs = 1° 46' 13.4" Ls = 110.00' LT = 73.34' T = 400.83' ST = 36.67'
Pls Sta 42+18.15 Θs = 2° 16' 36.0" Ls = 120.00' LT = 80.01' ST = 40.01'	Pls Sta 43+63.21 Δ = 7° 57' 37.3" (RT) D = 3' 47' 39.9" L = 209.79' T = 105.06' R = 1,510.00'	Pls Sta 45+07.94 Θs = 2° 16' 36.0" Ls = 120.00' LT = 80.01' ST = 40.01'
Pls Sta 47+56.18 Θs = 0° 35' 33.8" Ls = 72.00' LT = 48.00' ST = 24.00'	Pls Sta 50+03.78 Δ = 7° 21' 10.1" (LT) D = 1' 38' 47.1" L = 446.59' T = 223.60' R = 3,480.00'	Pls Sta 52+50.77 Θs = 0° 35' 33.8" Ls = 72.00' LT = 48.00' ST = 24.00'



1. ADDED PUE (3-14-2013)

SEE SHEET 15 FOR -L- PROFILE

FROM STA. 46+10 TO STA. 46+90
 10 TONS CL B RR; 40 SY GEOTEXTILE