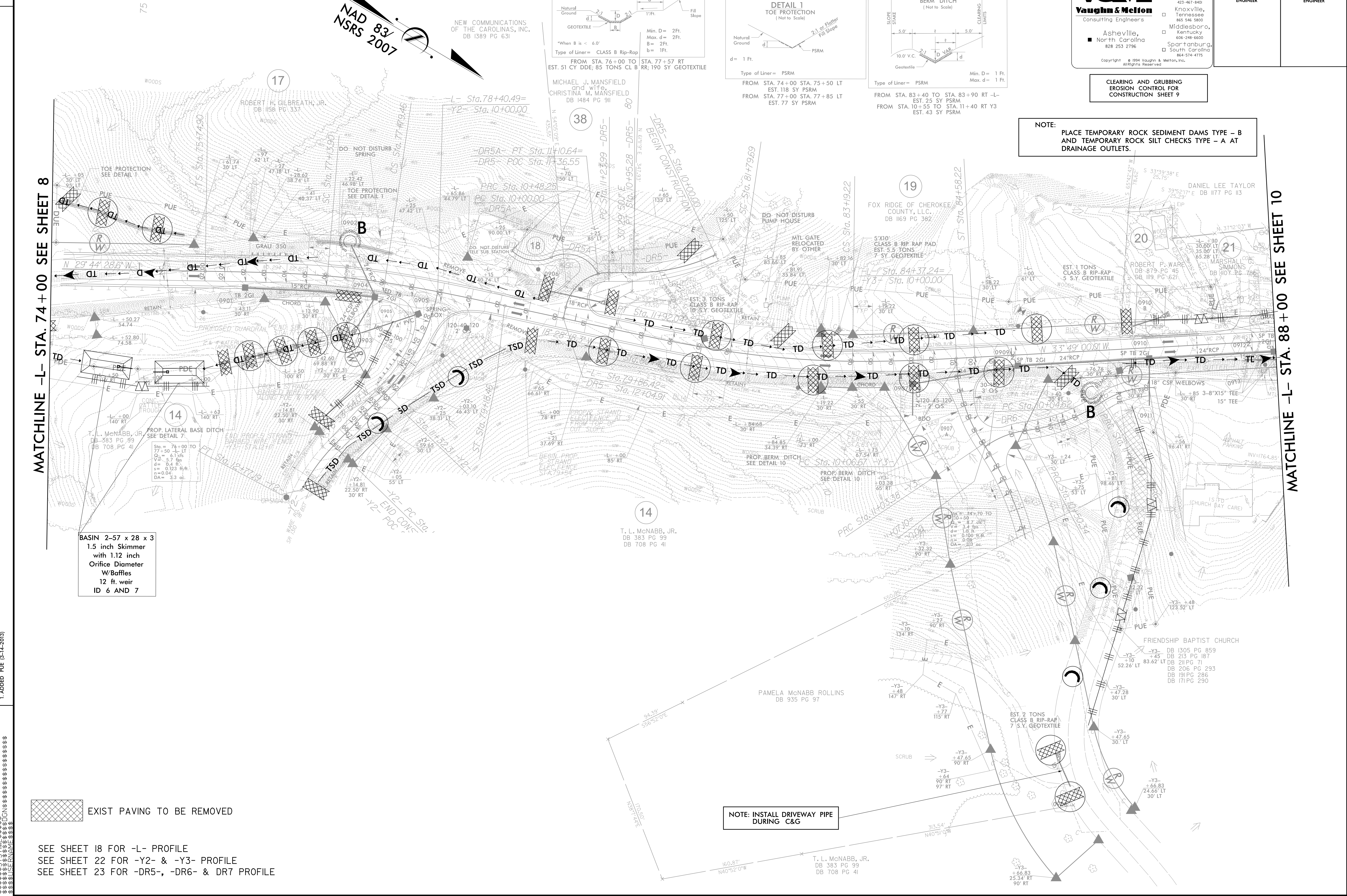


V&M
Vaughn & Melton
Consulting Engineers

Charlotte, North Carolina 704-357-0468
Tri-Cities, Tennessee 423-467-8401
Knoxville, Tennessee 865-546-5800
Middlesboro, Kentucky 606-248-6600
Spartanburg, South Carolina 864-574-4775

PROJECT REFERENCE NO. R-3622B	SHEET NO. EC-97/CONST.9
ROADWAY DESIGN ENGINEER	HYDRAULICS ENGINEER

Copyright © 1994 Vaughn & Melton, Inc. All Rights Reserved



MATCHLINE -L- STA. 74+00 SEE SHEET 8

MATCHLINE -L- STA. 88+00 SEE SHEET 10

SEE SHEET 18 FOR -L- PROFILE
SEE SHEET 22 FOR -Y2- & -Y3- PROFILE
SEE SHEET 23 FOR -DR5-, -DR6- & DR7 PROFILE

EXIST PAVING TO BE REMOVED

1. ADDED PUE (3-14-2013)

TIME
DATE
BY