

V&M
Vaughn & Melton
 Consulting Engineers

Charlotte, North Carolina 704-357-0488
 Tri-Cities, Tennessee 423-467-8401
 Knoxville, Tennessee 865-546-5800
 Middleboro, Kentucky 606-248-6600
 Asheville, North Carolina 828-253-2196
 Spartanburg, South Carolina 864-574-4775

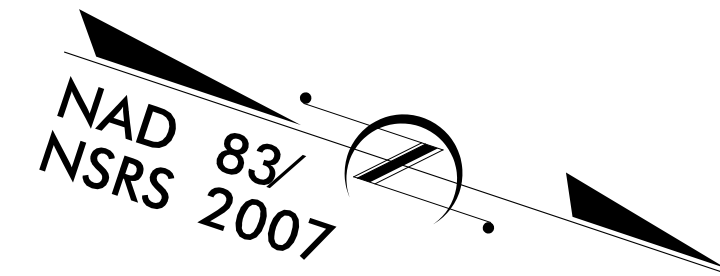
Copyright © 1994 Vaughn & Melton, Inc. All Rights Reserved.

PROJECT REFERENCE NO. R-3622B	SHEET NO. EC-7/CONST.7
ROADWAY DESIGN ENGINEER	HYDRAULICS ENGINEER

CLEARING AND GRUBBING
 EROSION CONTROL FOR
 CONSTRUCTION SHEET 7

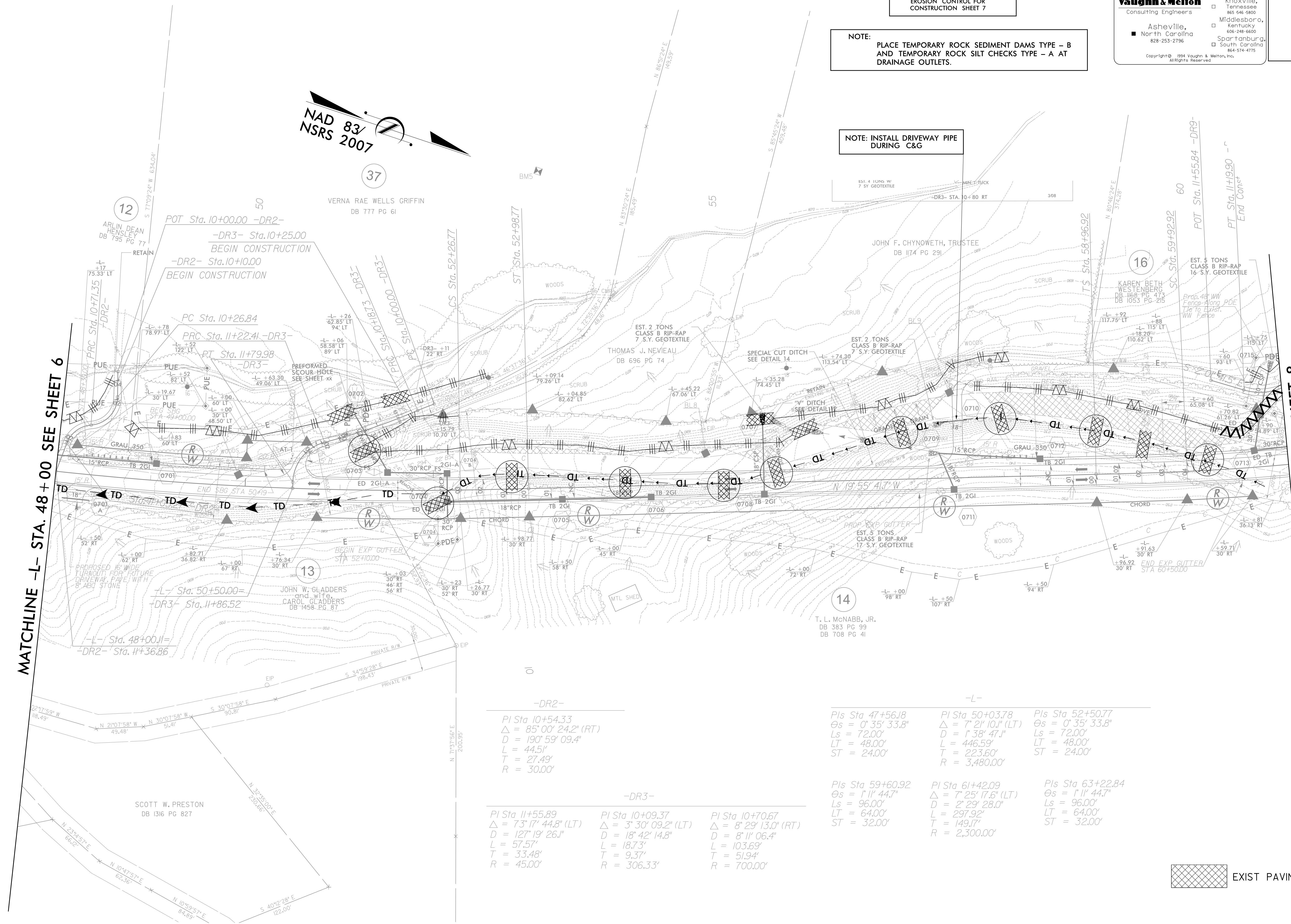
NOTE:
 PLACE TEMPORARY ROCK SEDIMENT DAMS TYPE - B
 AND TEMPORARY ROCK SILT CHECKS TYPE - A AT
 DRAINAGE OUTLETS.

NOTE: INSTALL DRIVEWAY PIPE
 DURING C&G



MATCHLINE -L- STA. 48 + 00 SEE SHEET 6

MATCHLINE -L- STA. 61 + 00 SEE SHEET 8



-DR2-
 PI Sta 10+54.33
 $\Delta = 85^{\circ}00'24.2''$ (RT)
 $D = 190^{\circ}59'09.4''$
 $L = 44.51'$
 $T = 27.49'$
 $R = 30.00'$

-DR3-

PI Sta 11+55.89 $\Delta = 73^{\circ}17'44.8''$ (LT) $D = 127^{\circ}19'26.1''$ $L = 57.57'$ $T = 33.48'$ $R = 45.00'$	PI Sta 10+09.37 $\Delta = 3^{\circ}30'09.2''$ (LT) $D = 18^{\circ}42'14.8''$ $L = 18.73'$ $T = 9.37'$ $R = 306.33'$	PI Sta 10+70.67 $\Delta = 8^{\circ}29'13.0''$ (RT) $D = 8^{\circ}11'06.4''$ $L = 103.69'$ $T = 51.94'$ $R = 700.00'$
--	--	---

-L-

Pls Sta 47+56.18 $\Delta = 0^{\circ}35'33.8''$ $Ls = 72.00'$ $L = 48.00'$ $ST = 24.00'$	PI Sta 50+03.78 $\Delta = 7^{\circ}21'10.1''$ (LT) $D = 1^{\circ}38'47.1''$ $L = 446.59'$ $T = 223.60'$ $R = 3,480.00'$	Pls Sta 52+50.77 $\Delta = 0^{\circ}35'33.8''$ $Ls = 72.00'$ $L = 48.00'$ $ST = 24.00'$
---	--	---

-L-

Pls Sta 59+60.92 $\Delta = 1^{\circ}11'44.7''$ $Ls = 96.00'$ $L = 64.00'$ $ST = 32.00'$	PI Sta 61+42.09 $\Delta = 7^{\circ}25'17.6''$ (LT) $D = 2^{\circ}29'28.0''$ $L = 297.92'$ $T = 149.17'$ $R = 2,300.00'$	Pls Sta 63+22.84 $\Delta = 1^{\circ}11'44.7''$ $Ls = 96.00'$ $L = 64.00'$ $ST = 32.00'$
---	--	---

EXIST PAVING TO BE REMOVED

1. ADDED PUE (3-14-2013)