

5/14/99

MATCHLINE -L- STA. 21+00. SEE SHEET 13

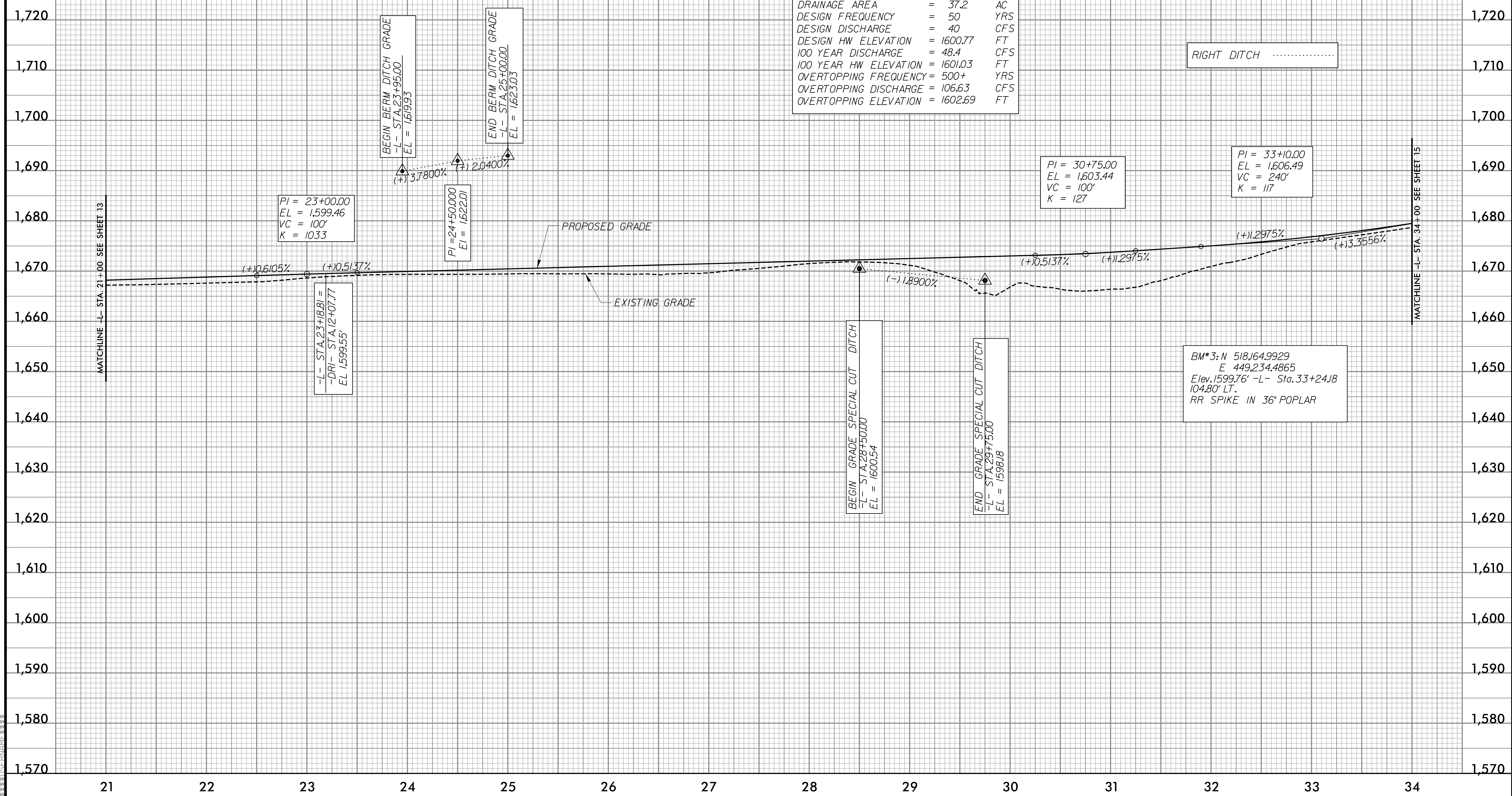
MATCHLINE -L- STA. 34+00. SEE SHEET 15

BM\*2: N 517,068,1438  
E 449,479,8485  
Elev. 1606.54' -L- Sta. 21+63.46  
81.7' RI.  
RR SPIKE IN 30' POPLAR

-L-

**PIPE HYDRAULIC DATA**  
36" RCP Sta. 29+75.75

DRAINAGE AREA	=	37.2	AC
DESIGN FREQUENCY	=	50	YRS
DESIGN DISCHARGE	=	40	CFS
DESIGN HW ELEVATION	=	1600.77	FT
100 YEAR DISCHARGE	=	48.4	CFS
100 YEAR HW ELEVATION	=	1601.03	FT
OVERTOPPING FREQUENCY	=	500+	YRS
OVERTOPPING DISCHARGE	=	106.63	CFS
OVERTOPPING ELEVATION	=	1602.69	FT



RIGHT DITCH .....

PI = 30+75.00  
EL = 1,603.44  
VC = 100'  
K = 127

PI = 33+10.00  
EL = 1,606.49  
VC = 240'  
K = 117

PI = 23+00.00  
EL = 1,599.46  
VC = 100'  
K = 1033

PI = 24+50.00  
EL = 1,622.01

-L- STA. 23+18.81 =  
-DRI- STA. 12+07.77  
EL 1,599.55'

BEGIN GRADE SPECIAL CUT DITCH  
-L- STA. 28+50.00  
EL = 1,600.54

END GRADE SPECIAL CUT DITCH  
-L- STA. 29+75.00  
EL = 1,598.18

BM\*3: N 518,164,9929  
E 449,234,4865  
Elev. 1599.76' -L- Sta. 33+24.18  
104.80' LT.  
RR SPIKE IN 36" POPLAR