

V&M
Vaughn & Melton
Consulting Engineers

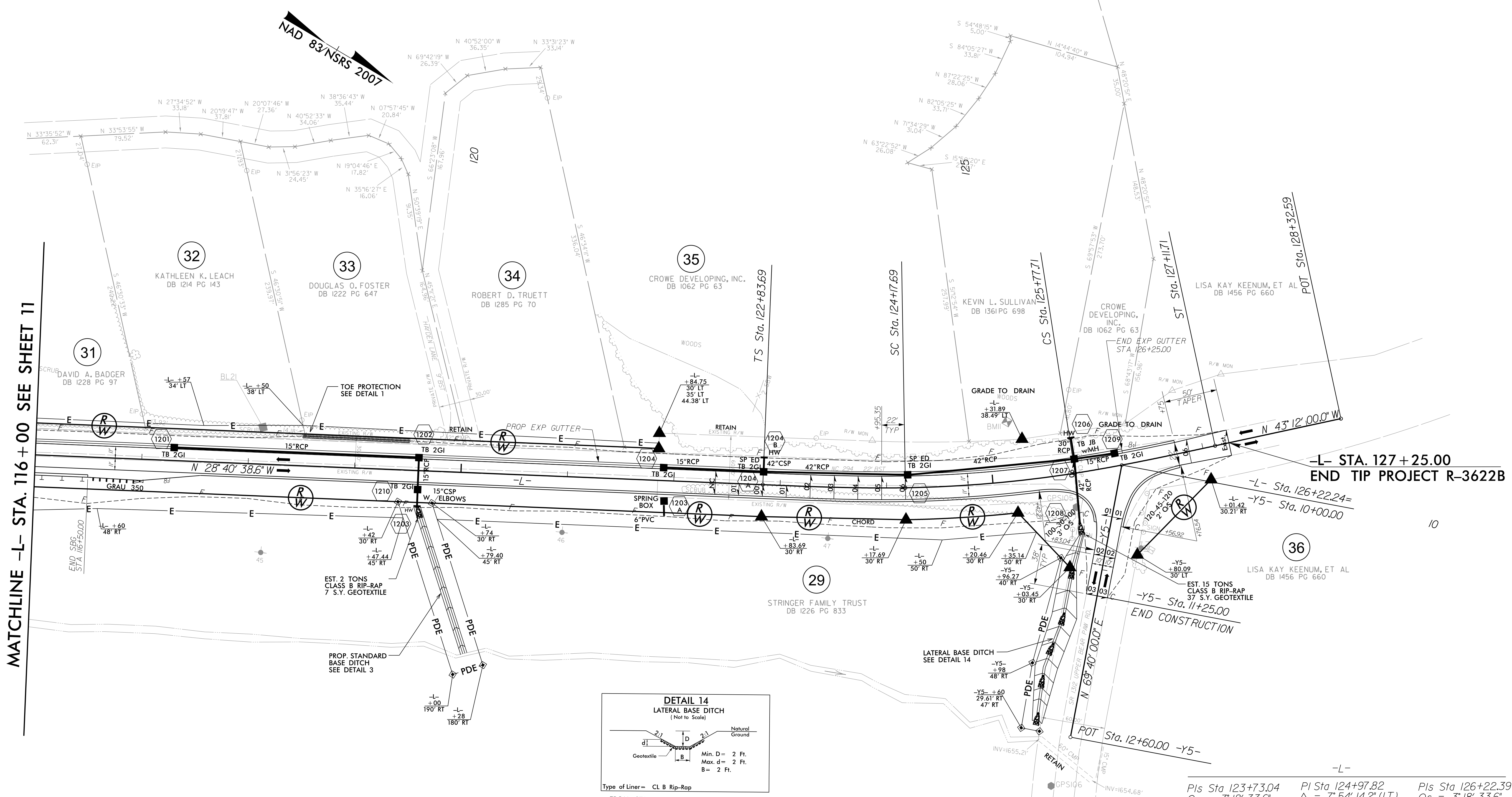
Asheville, North Carolina
828-253-2796

Charlotte, North Carolina 704-357-0488
Tri-Cities, Tennessee 423-487-9480
Knoxville, Tennessee 865-546-5800
Middlesboro, Kentucky 606-248-6600
Spartanburg, South Carolina 864-574-4775

Copyright © 1994 Vaughn & Melton, Inc. All Rights Reserved.

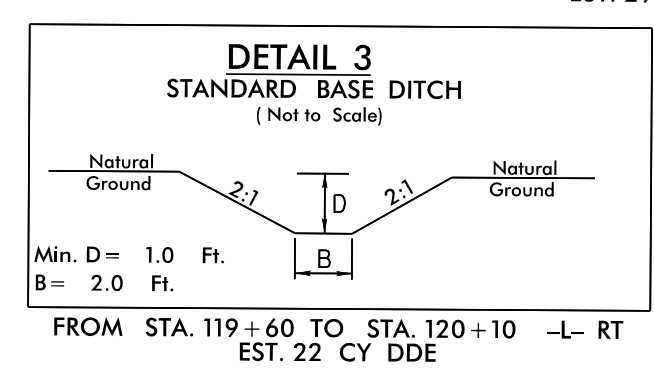
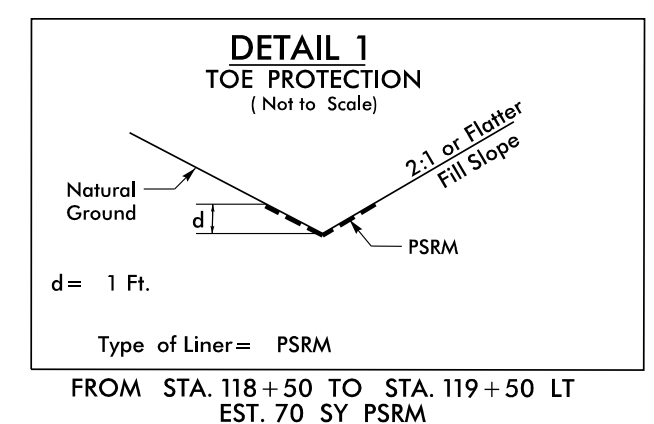
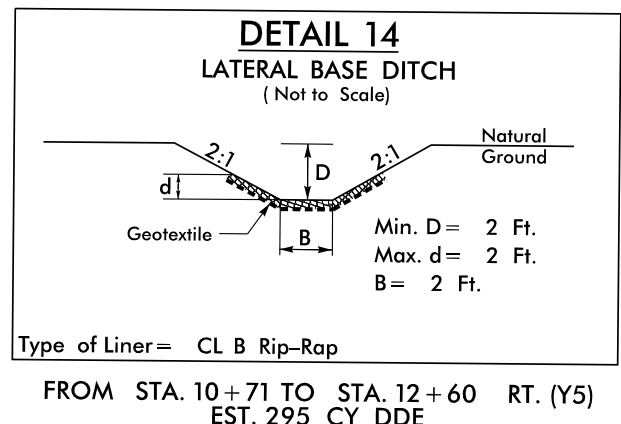
PROJECT REFERENCE NO. R-3622B	SHEET NO. 12
ROADWAY DESIGN ENGINEER	HYDRAULICS ENGINEER

Professional Engineer Seal: North Carolina, License No. 26960, Name: SEAL, Date: 03/04/03



MATCHLINE -L- STA. 116 + 00 SEE SHEET 11

-L- STA. 127 + 25.00
END TIP PROJECT R-3622B



Pls Sta 123+73.04 $\Theta_s = 3' 18'' 33.6''$ $L_s = 134.00'$ $LT = 89.35'$ $ST = 44.68'$	Pls Sta 124+97.82 $\Delta = 7' 54'' 14.2'' (LT)$ $D = 4' 56'' 21.4''$ $L = 160.02'$ $T = 80.14'$ $R = 1,160.00'$	Pls Sta 126+22.39 $\Theta_s = 3' 18'' 33.6''$ $L_s = 134.00'$ $LT = 89.35'$ $ST = 44.68'$
---	---	---

NOTE: USE ROD & LUG CONNECTORS W/SLEEVE GASKETS AT ALL ELBOWS

8/17/09

SEE SHEET 21 FOR -L- PROFILE
SEE SHEET 22 FOR -Y5- PROFILE