

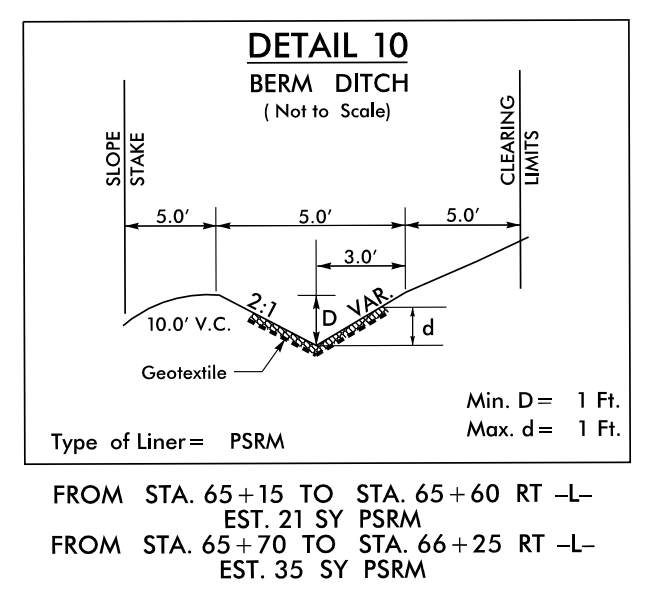
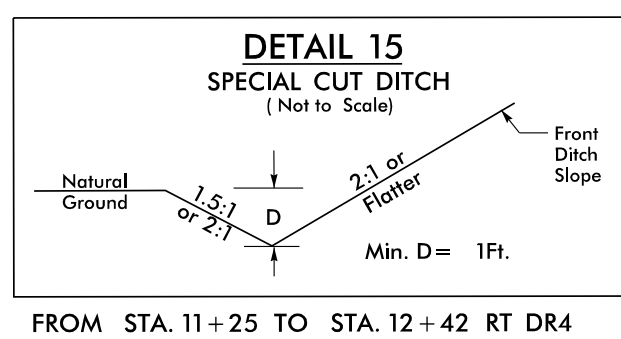
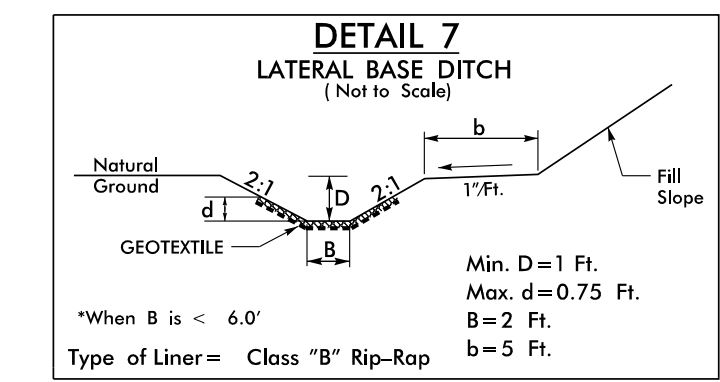
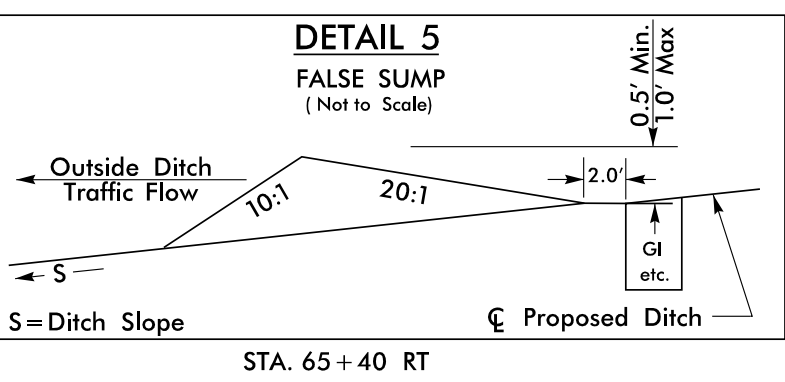
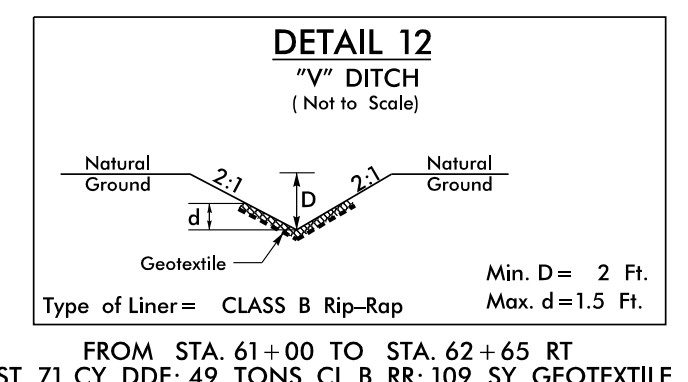
**V&M**  
Vaughn & Melton  
Consulting Engineers

Charlotte, North Carolina 28203-0488  
Tri-Cities, Tennessee 423-467-8401  
Knoxville, Tennessee 865-546-5800  
Middlesboro, Kentucky 606-248-1600  
Spartanburg, South Carolina 864-574-4775

Asheville, North Carolina 828-253-2796

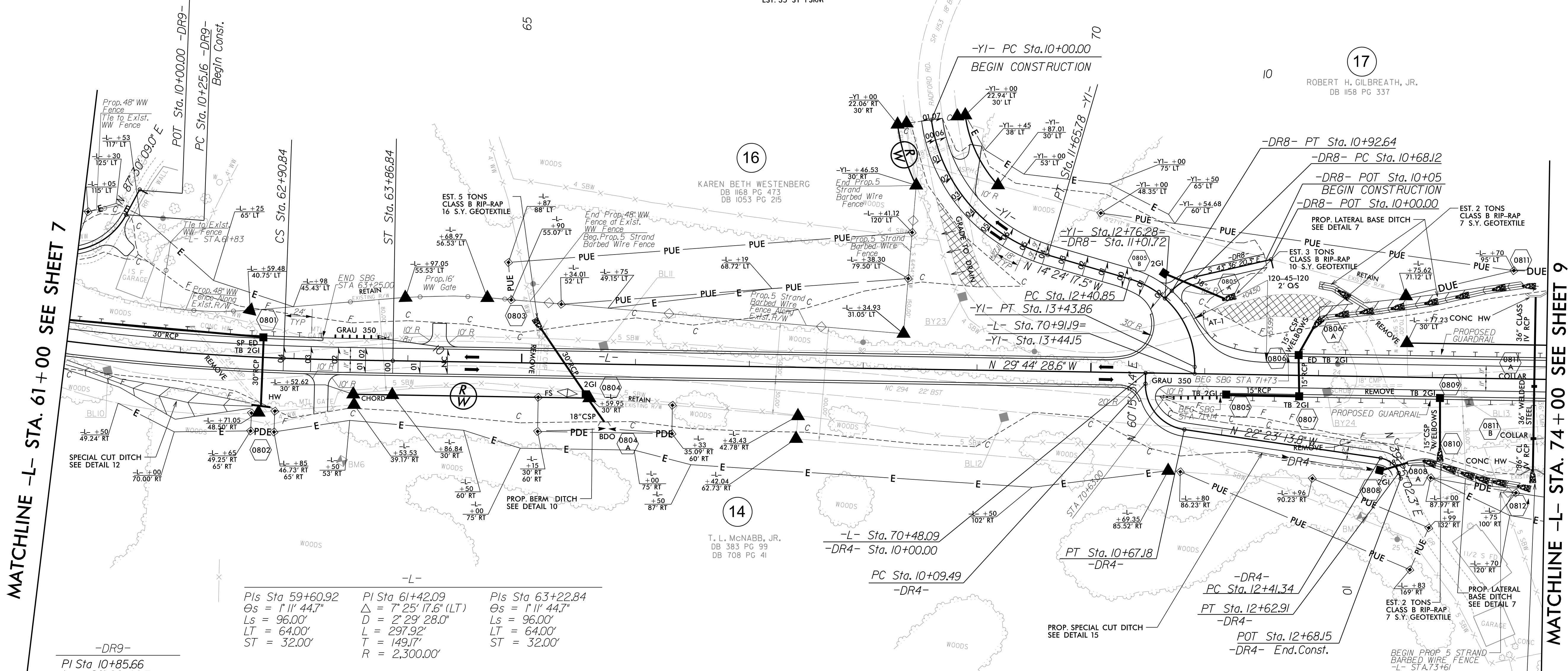
Copyright © 1994 Vaughn & Melton, Inc. All Rights Reserved.

PROJECT REFERENCE NO.	R-3622B
SHEET NO.	8
ROADWAY DESIGN ENGINEER	SEAL 26960
HYDRAULICS ENGINEER	SEAL 030453



-Y1-

PI Sta 10+93.44	PI Sta 12+93.44
Δ = 65° 57' 36.5" (LT)	Δ = 66° 39' 05.0" (RT)
D = 39° 47' 19.4"	D = 70° 44' 07.9"
L = 165.78'	L = 94.23'
T = 93.44'	T = 53.26'
R = 144.00'	R = 81.00'



MATCHLINE -L- STA. 61+00 SEE SHEET 7

MATCHLINE -L- STA. 74+00 SEE SHEET 9

-DR9-

PI Sta 10+85.66  
Δ = 90° 28' 09.5" (RT)  
D = 95° 29' 34.7"  
L = 94.74'  
T = 60.49'  
R = 60.00'

-L-

PIs Sta 59+60.92	PI Sta 61+42.09	PIs Sta 63+22.84
Δs = 1° 11' 44.7"	Δ = 7° 25' 17.6" (LT)	Δs = 1° 11' 44.7"
Ls = 96.00'	D = 2° 29' 28.0"	Ls = 96.00'
LT = 64.00'	L = 297.92'	LT = 64.00'
ST = 32.00'	T = 149.17'	ST = 32.00'
	R = 2,300.00'	

-DR4-

PI Sta 10+44.66	PI Sta 12+53.31
Δ = 82° 38' 45.3" (LT)	Δ = 61° 48' 16.1" (RT)
D = 143° 14' 22.0"	D = 286° 28' 44.0"
L = 57.70'	L = 21.57'
T = 35.17'	T = 11.97'
R = 40.00'	R = 20.00'

-DR8-

PI Sta 10+80.78  
Δ = 35° 07' 06.9" (LT)  
D = 143° 14' 22.0"  
L = 24.52'  
T = 12.66'  
R = 40.00'

NOTE: USE ROD & LUG CONNECTORS W/SLEEVE GASKETS AT ALL ELBOWS

EXIST PAVEMENT TO BE REMOVED

SEE SHEET 8A FOR TEMPORARY CONSTRUCTION  
SEE SHEET 22 FOR -Y1- PROFILE  
SEE SHEET 23 FOR -DR4- & -DR8- PROFILE  
SEE SHEET 17 FOR -L- PROFILE